

WALL LEGEND

SYMBOL	DESCRIPTION	LINEAR LENGTH
	SPLIT FACE PERIMETER WALL	564 LF
	3'-4" SPLIT RAIL FENCE WITH CHAIN LINK	1,440 LF
	12" VINYL CLAD CHAIN LINK FENCE	665 LF
	BALLFIELD BACKSTOP FENCE	677 LF
	4' HIGH TUBULAR STEEL FENCE	450 LF



SPLIT FACE PERIMETER WALL



SPLIT RAIL FENCE WITH CHAINLINK

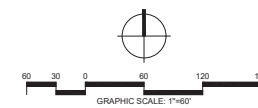


TUBULAR STEEL FENCE



VINYL CHAIN LINK FENCE

NOTE: IMAGES ARE FOR REFERENCE ONLY.
COLORS AND FINISHES TO BE DETERMINED
DURING CONSTRUCTION DOCUMENT PHASE.



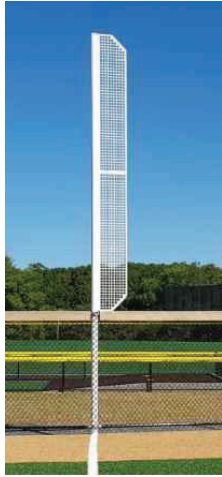
**PROPOSED FENCING
BEECHWOOD COMMUNITY PARK**

Paso Robles, California

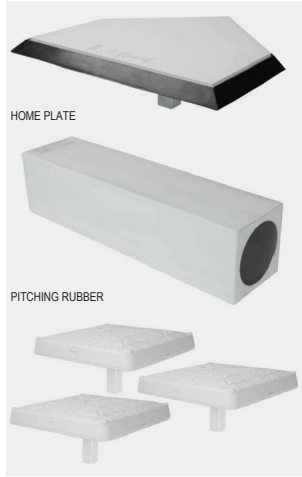


**1160 MARSH STREET #150
SAN LUIS OBISPO, CA 93401
805-544-0707
rickengineering.com**

V:\projects\proj\proj\proj\CAD\Drawings\DWG\1160 Marsh Street\1160 Marsh Street.dwg - plotted for print on 2024-09-05 @ 14:51 - client: rick - © 2024 Rick Engineering Company



FOUL BALL POLE



HOME PLATE

PITCHING RUBBER

BASES



STABILIZED INFIELD MIX



NATURAL TURF



DUGOUT BENCHES



PORTABLE BLEACHERS

BALL GAME ELEMENTS

FIELD SURFACE TREATMENT

SEATING



ADJUSTABLE OUTFIELD FENCE



BALLFIELD BACKSTOP



PORTABLE SOCCER GOAL POST



SPORTS FIELD LIGHTING



PROPOSED SPORTS FIELD AMENITIES BEECHWOOD COMMUNITY PARK

Paso Robles, California



1160 MARSH STREET #150
SAN LUIS OBISPO, CA 93401
805-544-0707
rickengineering.com

\\fs-rick.com\projects\C_Park\A17871A\Visuals\Park\CAD\17871-Beechwood.dwg - plotted by: aranz on 2024-09-05 @ 14:51 - e:\bmc_mca.ctb - © 2024 Rick Engineering Company



ADA POWDER-COATED STEEL PICNIC TABLE



POWDER-COATED STEEL PICNIC TABLE



POWDER-COATED STEEL BENCH



POWDER-COATED STEEL RECEPTACLE

SITE FURNISHINGS - TOURNESOL PLAZA COLLECTION



WATER FOUNTAIN



BIKE RACK - OPTION 1



EMERGENCY CALL STATION

NOTE: IMAGES ARE FOR REFERENCE ONLY.
COLORS TO BE DETERMINED DURING
CONSTRUCTION DOCUMENT PHASE.



PROPOSED GENERAL AMENITIES BEECHWOOD COMMUNITY PARK

Paso Robles, California



1160 MARSH STREET #150
SAN LUIS OBISPO, CA 93401
805-544-0707
rickengineering.com



HEXAGON SHADE GAZEBO

RESTROOM BUILDING WILL BE A CUSTOM DESIGN MEETING THE FOLLOWING DESIGN CRITERIA:

- MINIMUM OF 270 USERS PER HOUR
- DESIGNATED STORAGE SPACE
- EXTERIOR WASH STATIONS
- AED ON OUTSIDE OF RESTROOM
- NO WOOD FINISHES

FINAL FLOOR PLAN TO BE PREPARED DURING CONSTRUCTION DOCUMENT PHASE IN COORDINATION WITH PUBLIC RESTROOM COMPANY, OR APPROVED VENDOR.

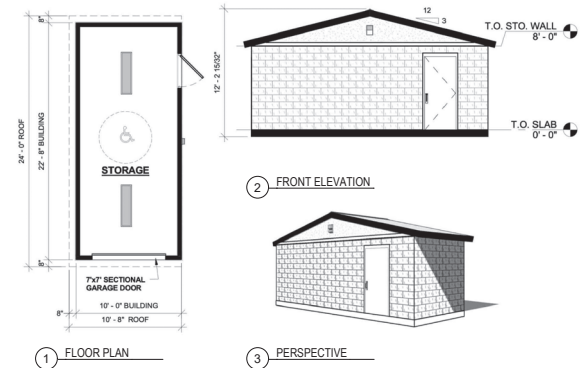
PROPOSED RESTROOM STRUCTURE



DUGOUT SHADE STRUCTURE



PROPOSED STORAGE STRUCTURE (FINISHES SUBJECT TO CHANGE)



PROPOSED STRUCTURES BEECHWOOD COMMUNITY PARK

Paso Robles, California

NOTE: IMAGES ARE FOR REFERENCE ONLY.
COLORS AND FINISHES TO BE DETERMINED
DURING CONSTRUCTION DOCUMENT PHASE.

RICK 1160 MARSH STREET #150
SAN LUIS OBISPO, CA 93401
805-544-0707
rickengineering.com

V:\p\ricking.com\projects\C_Park\CA\17871A\Beechwood.dwg - plotted by: armitz ON: 2024-09-05 @ 14:52 - c:\bmc\mca.ctb - © 2024 Rick Engineering Company



PROPOSED TOT LOT

Palette **AH**



PROPOSED COLOR PALETTE



PLAYGROUND OVERHEAD SHADE STRUCTURE



TOT LOT PLAY AREA BEECHWOOD COMMUNITY PARK

Paso Robles, California

NOTE: IMAGES ARE FOR REFERENCE ONLY.
COLORS AND FINISHES TO BE DETERMINED
DURING CONSTRUCTION DOCUMENT PHASE.

RICK 1160 MARSH STREET #150
SAN LUIS OBISPO, CA 93401
805-544-0707
rickengineering.com



LAND USE LEGEND

- RESIDENTIAL SINGLE FAMILY-7
- RESIDENTIAL MULTIPLE FAMILY- 14
- RESIDENTIAL MULTIPLE FAMILY -24
- MIXED USE - 24
- COMMUNITY PARK
- AMENITIZED / PASSIVE PARK AREAS
- CONSERVED OPEN SPACE
- PG+E UTILITY OPEN SPACE
- MULTI-USE PATHWAY
- ENHANCED SIDEWALK
- NATIVE PATHWAY
- PROPOSED TREE
- EXISTING TREE, TO REMAIN
- WATER QUALITY BASIN
Final location, size and design of water quality basins subject to adjustment pending final site plans and engineering.
- SUBTERRANEAN WATER QUALITY CHAMBER
Final location, size and design of underground water quality chambers subject to adjustment pending final site plans and engineering.
- WATER PRESSURE BOOSTER STATION
- SEWER LIFT STATION

NOTE:
LOTS AND INTERNAL STREETS ARE CONCEPTUAL AND SUBJECT TO REVISION IN ACCORDANCE WITH THE SPECIFIC PLAN

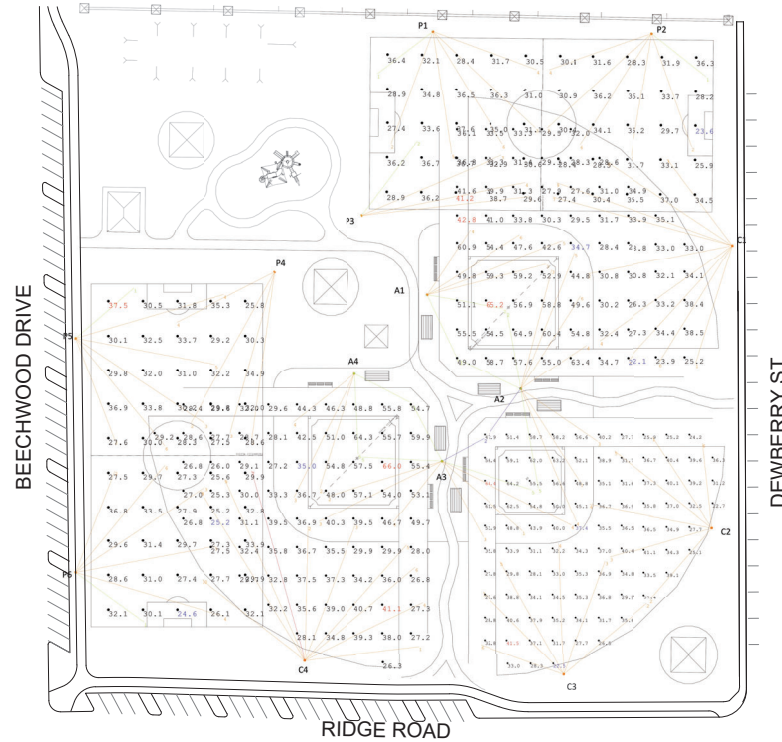


BEECHWOOD SPECIFIC PLAN BEECHWOOD COMMUNITY PARK

Paso Robles, California

RICK 1160 MARSH STREET #150
SAN LUIS OBISPO, CA 93401
805-544-0707
rickengineering.com

V:\p\ricking.com\projects\C_P\CA\17871A\Visuals\Park\CA\17871 - Beechwood.dwg -- plotted by: armita on: 2024-09-05 @ 14:52 -- e:\rme\mcs.ctb -- 2024 Rick Engineering Company



Pole Summary		
Scene: DEFAULT		
Poles	# Lums	MH
A1	€	70
A2-F1	€	70
A2-F2	€	70
A3-F2	€	70
A3-F3	€	70
A4	€	70
C1	€	70
C2	€	70
C3	€	70
C4	€	70
P1	€	70
P2	€	70
P3	€	70
P4	€	70
P5	€	70
P6	€	70

Pole Wattage Summary	
Scene: DEFAULT	
Label	Total Watts
A1	4800
A2	8800
A3	8000
A4	4000
C1	7200
C2	4800
C3	4800
C4	8000
P1	4800
P2	4800
P3	4800
P4	4800
P5	4800
P6	4800
TOTAL	76000

Luminaire Schedule					
Scene: DEFAULT					
Symbol	Qty	Label	LLF	Lum. Watts	Arrangement
⬮	2	TSL_EW-20EV-NL	0.950	800	Single
⬮	15	TSL_W-20EV-NLV	0.950	800	Single
⬮	77	TSL_M-20EV-NLV	0.950	800	Single
⬮	1	TSL_N-20EV-NLV	0.950	800	Single

Calculation Summary											
Scene: DEFAULT											
Label	Area Size	Units	Avg	Max	Min	Max/Min	# Pts	PtSpCt	PtSpCb	CV	UG
SOCCER F1	300'x150'	Fc	32.58	41.2	23.6	1.75	50	30	30	0.11	1.33
SOCCER F2	300'x150'	Fc	30.38	37.5	24.6	1.52	50	30	30	0.10	1.37
SOFTBALL F1	220' RADIUS	Fc	54.46	65.2	34.7	1.88	25	25	25	0.13	1.29
INFIELD											
SOFTBALL F1		Fc	32.22	42.8	22.1	1.94	46	25	25	0.14	1.57
OUTFIELD											
SOFTBALL F2	200' RADIUS	Fc	54.12	64.4	37.4	1.72	25	20	20	0.14	1.28
INFIELD											
SOFTBALL F2		Fc	33.76	41.5	22.5	1.84	71	20	20	0.14	1.64
OUTFIELD											
SOFTBALL F3	220' RADIUS	Fc	50.16	56.0	35.0	1.89	25	25	25	0.17	1.57
INFIELD											
SOFTBALL F3		Fc	31.45	41.1	25.2	1.63	48	25	25	0.14	1.51
OUTFIELD											



COMMUNITY PARK
SOCCER/SOFTBALL
24-0259-MP-02.AGI

I warrant that the information contained herein was prepared by me or under my direct supervision and that I am a duly licensed professional engineer in the State of California. I warrant that the information contained herein was prepared by me or under my direct supervision and that I am a duly licensed professional engineer in the State of California. I warrant that the information contained herein was prepared by me or under my direct supervision and that I am a duly licensed professional engineer in the State of California.

DRAWN BY: KBER
Date: 5/13/2024
SCALE: NTS
Page 1 of 2
24-0259-MP-02.AGI

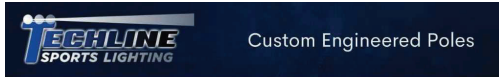


LIGHTING PHOTOMETRICS BEECHWOOD COMMUNITY PARK

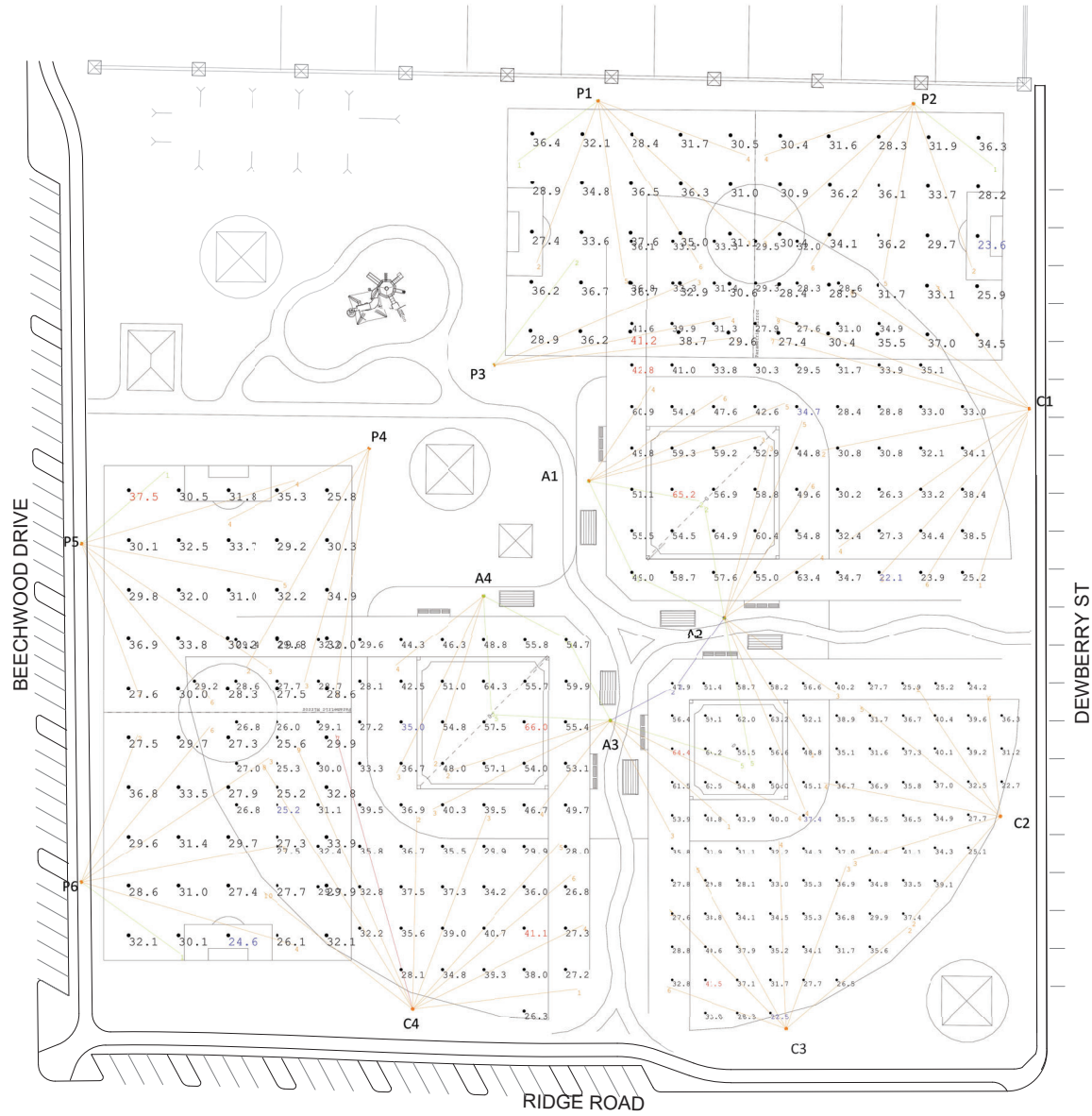
Paso Robles, California



1160 MARSH STREET #150
SAN LUIS OBISPO, CA 93401
805-544-0707
rickengineering.com



Techline Sports Lighting's lifetime engineering provides worry-free systems with no maintenance



**COMMUNITY PARK
SOCCER/SOFTBALL
24-0259-MP-02-AGI**

A professional engineer has prepared this document in accordance with the requirements of the California Engineering Board. The engineer's seal and signature are required for this document to be valid. The engineer's seal and signature are required for this document to be valid. The engineer's seal and signature are required for this document to be valid.

DRAWN BY: KBER
Date: 5/13/2024
SCALE: NTS
Page 2 of 2
24-0259-MP-02-AGI



LIGHTING PHOTOMETRICS BEECHWOOD COMMUNITY PARK

Paso Robles, California

RICK 1160 MARSH STREET #150
SAN LUIS OBISPO, CA 93401
805-544-0707
rickengineering.com

V:\picking.com\projects\C_Park_A\19171A\landscape\Park\02A\19171A-Beechwood.dwg - plotted by: aranz on 2024-09-05 @ 14:52 - ebrinc.ncs.ctb - © 2024 Rick Engineering Company