

1
ROOF AWNING w/ OUTLOOKERS/
BRACKETS



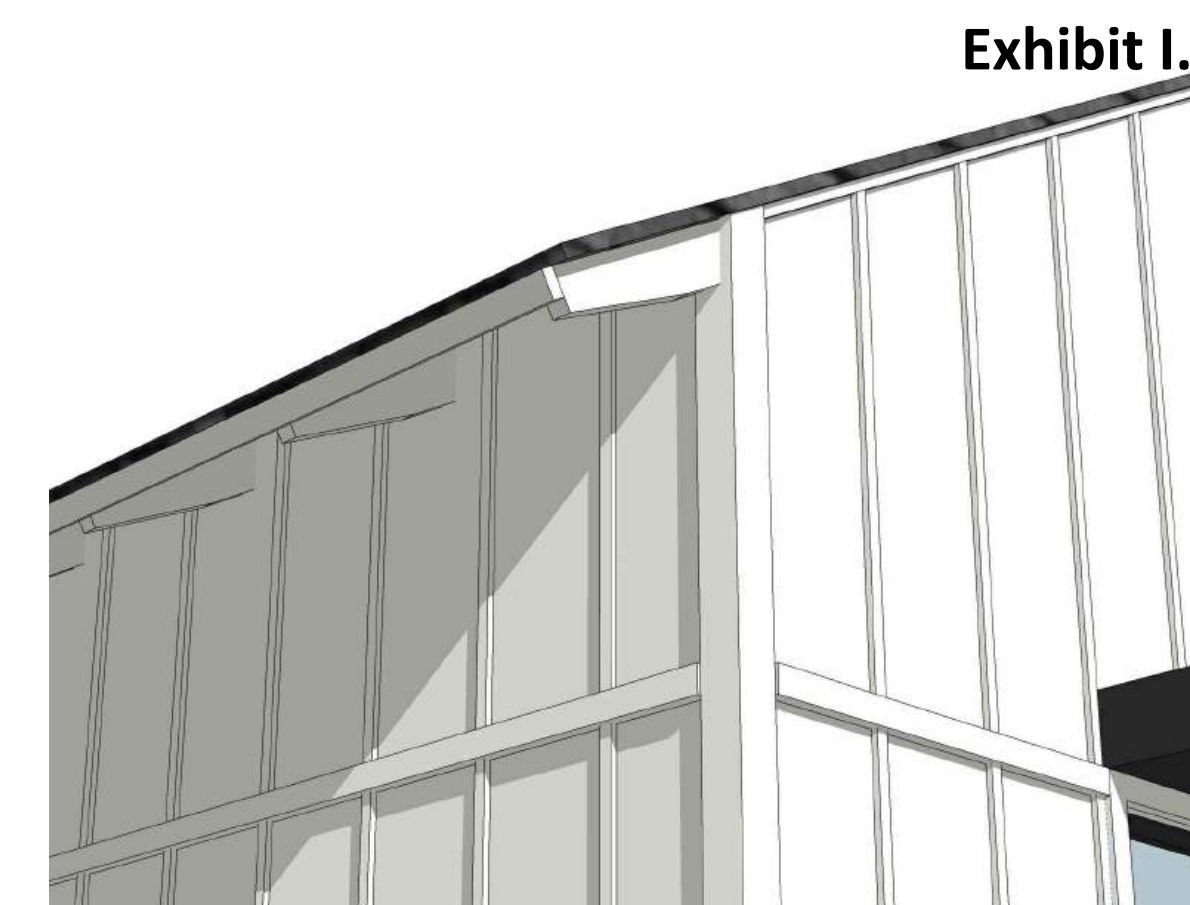
2
DECORATIVE ENTRANCE DOOR
w/ OPAQUE LITE



3
RECESSED WINDOW AT STUCCO
w/ SILL TRIM



4
METAL AWNING OVER
WINDOW



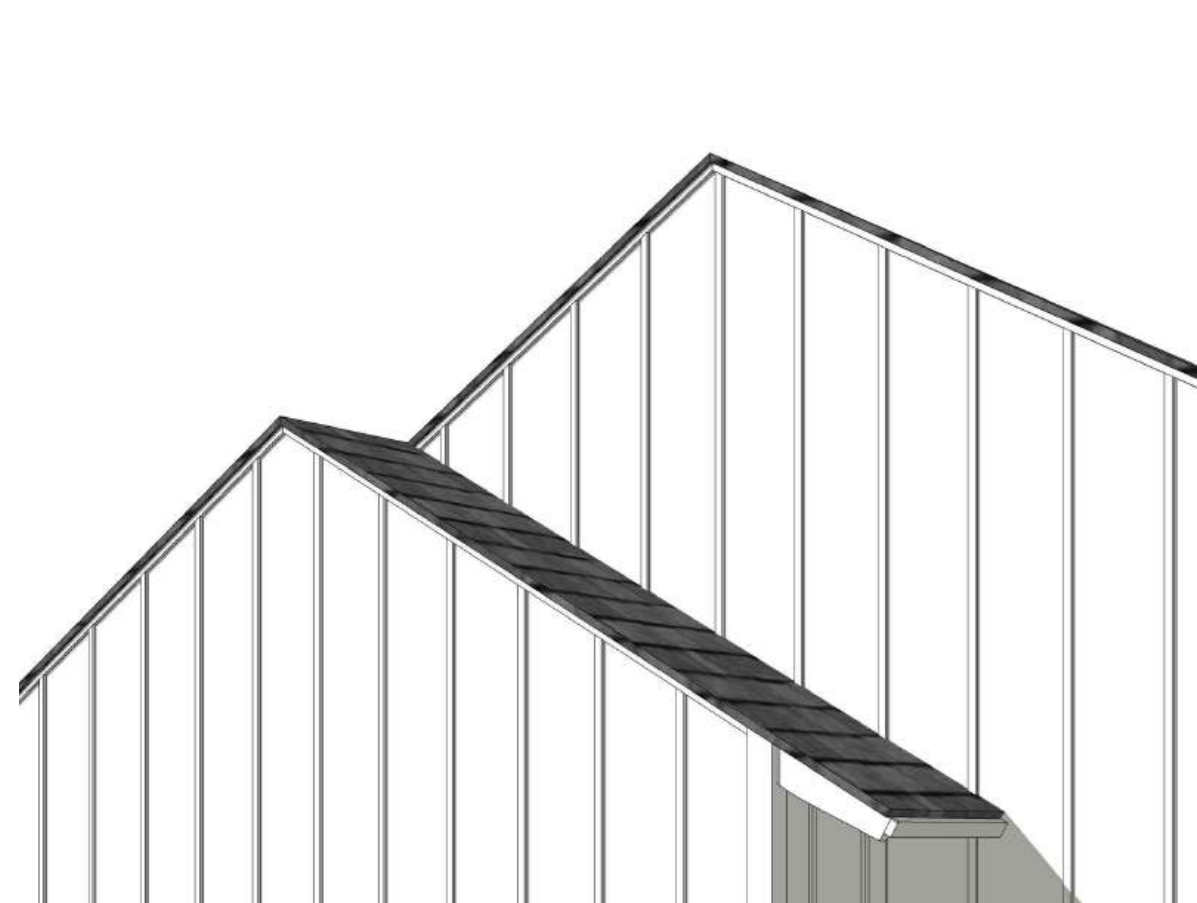
5
EXPOSED TRUSS TAILS w/
TIGHT GABLE ENDS



6
FIBER CEMENT THIN WINDOW
TRIM AND SILL



7
DECORATIVE WOOD CORBEL



8
BOARD & BATTEN SIDING



9
TRIM CAP AT STUCCO



10
ROLL UP METAL GARAGE DOOR



11
STANDING SEAM ROOF



12
COMPOSITE SHINGLE



Architecture + Planning
888.456.5849
ktgy.com

Olsen Ranch 212 LLC
530 Technology Drive, Suite 100
Irvine, CA 92618

VINEDO PA 2
PASO ROBLES, CA # 2023-0561

Plot Date: 03.05.2025
Architectural Review Submittal Set: 04.08.2024
2nd Planning Submittal Set: 01.22.2025
PC Meeting Set: 02.19.2025
Updated Meeting Set: 02.25.2025



ENLARGED DETAIL BOARD
STYLE A - MODERN FARMHOUSE

A1.5



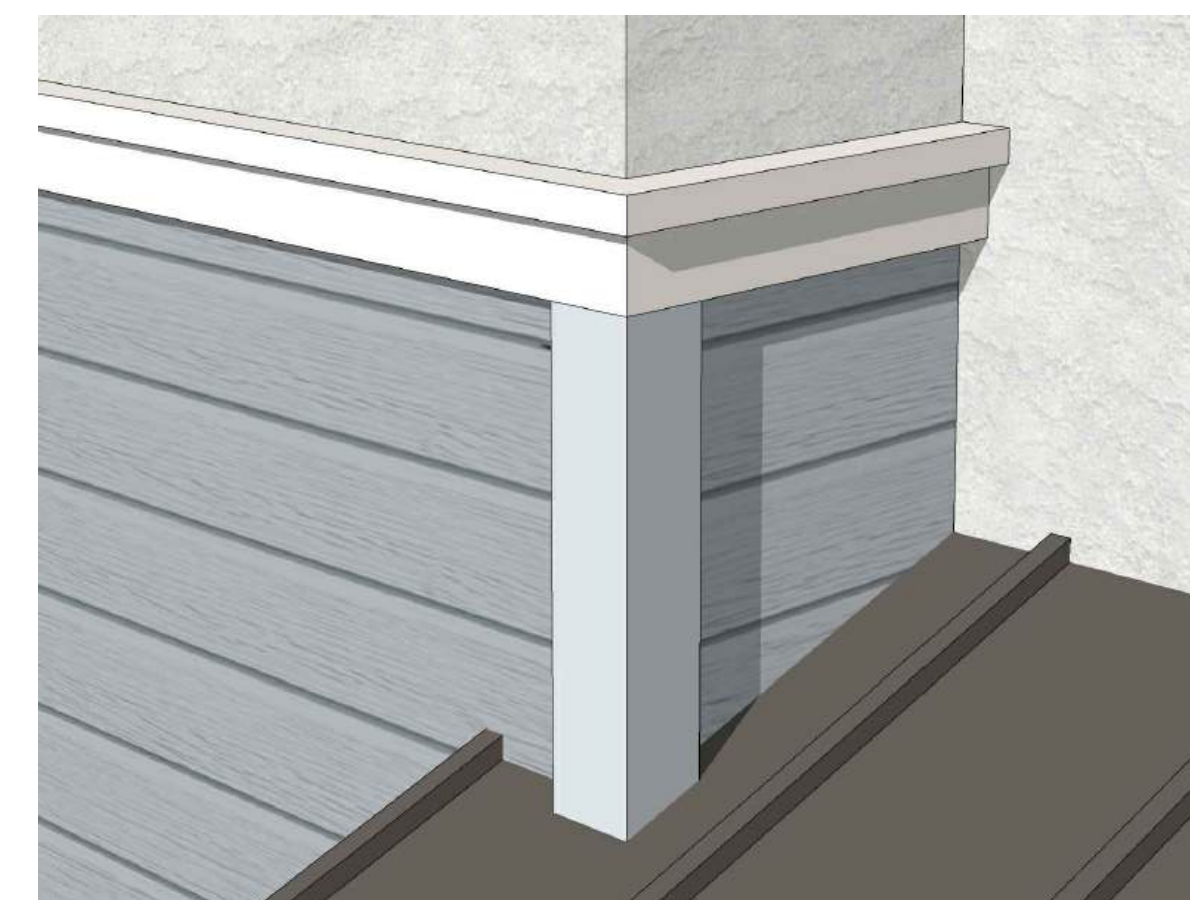
1
ROOF AWNING w/ OUTLOOKERS/
BRACKET AWNING



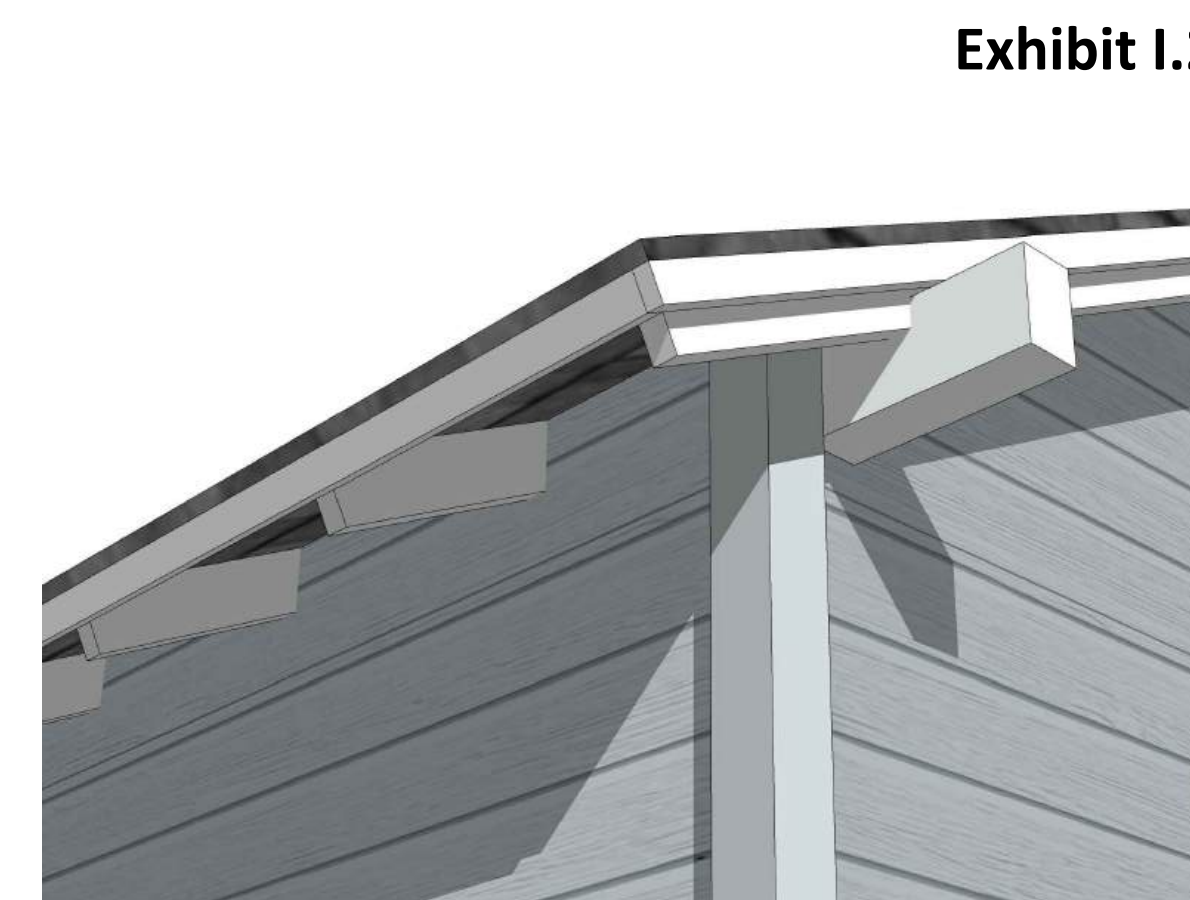
2
ENTRANCE DETAIL



3
RECESSED WINDOW AT STUCCO
w/ SILL TRIM



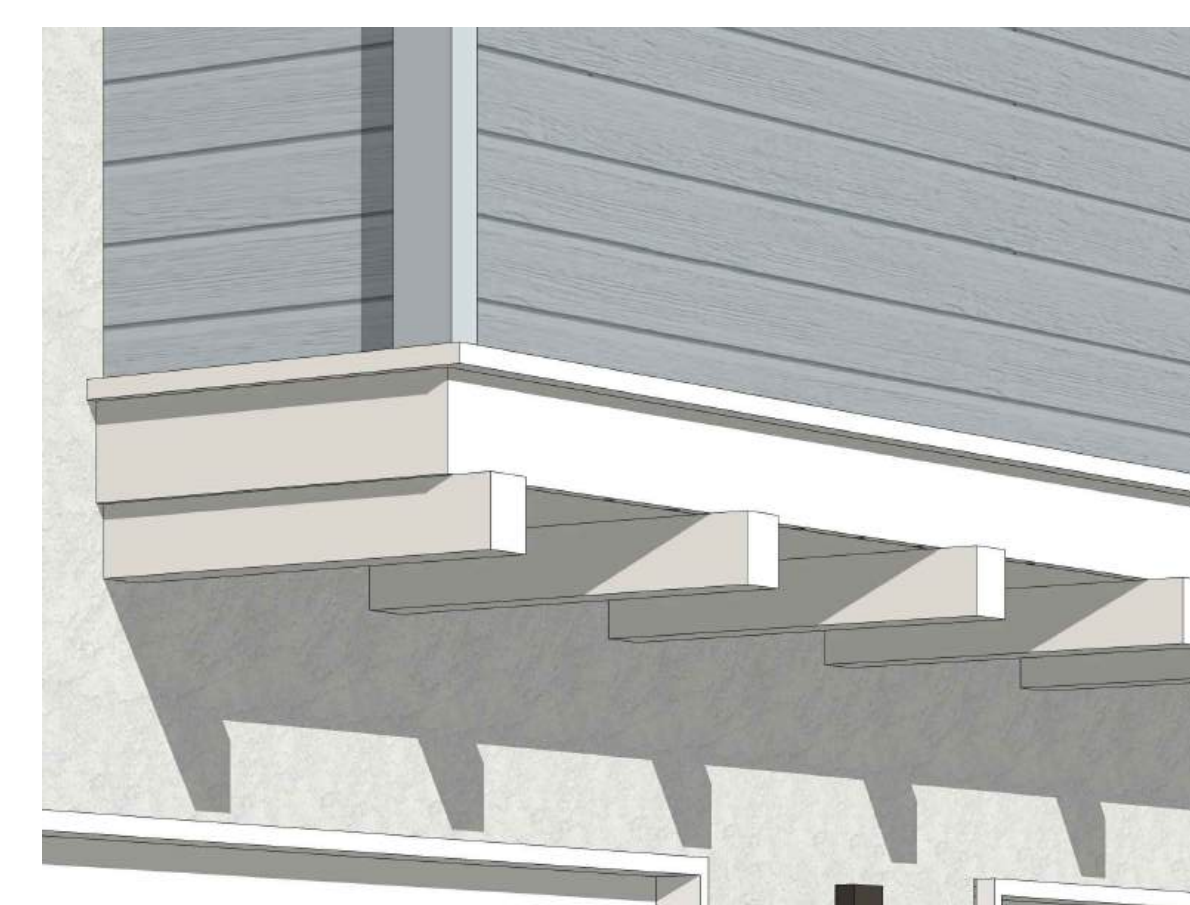
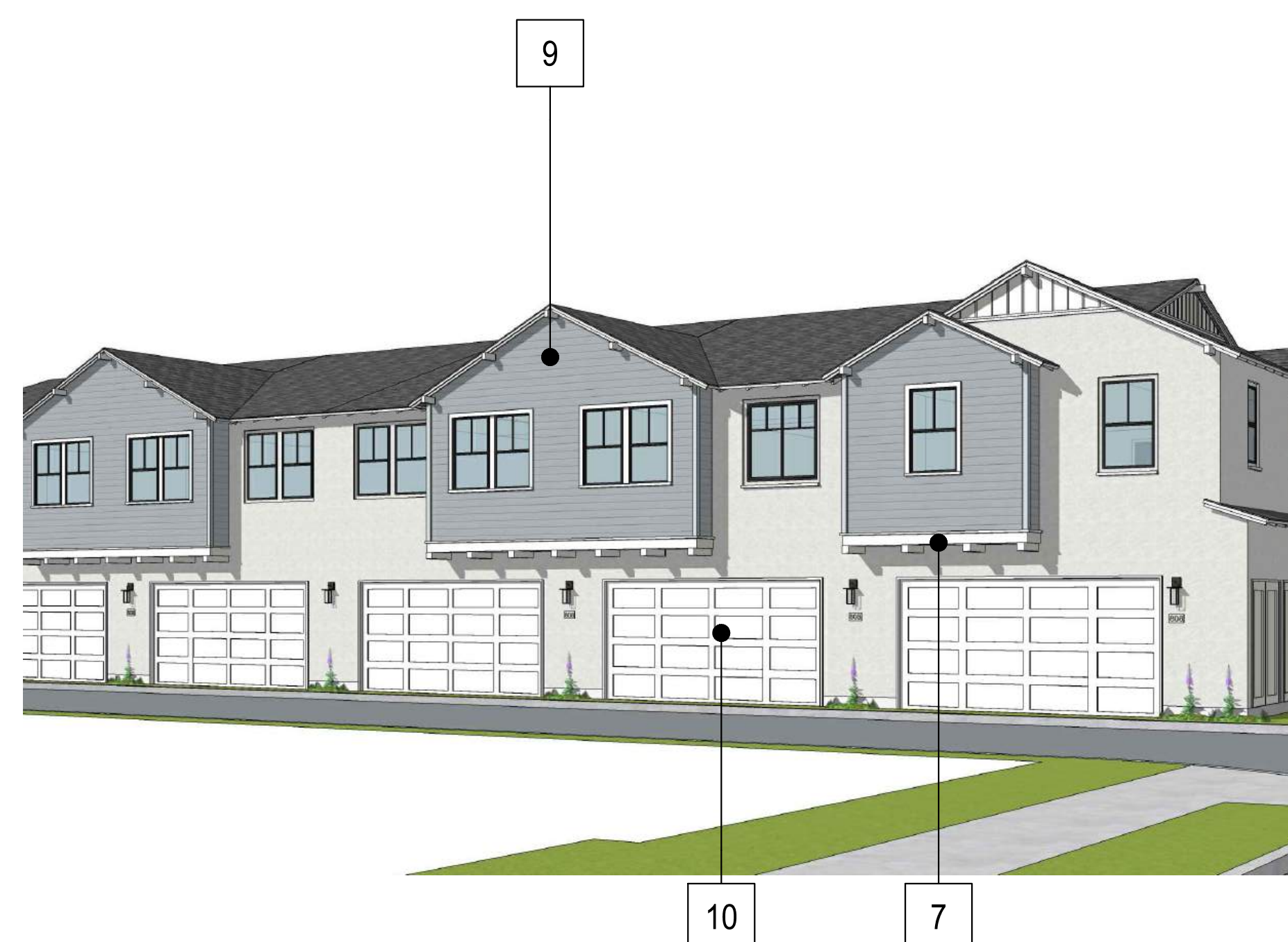
4
TRIM BOARD



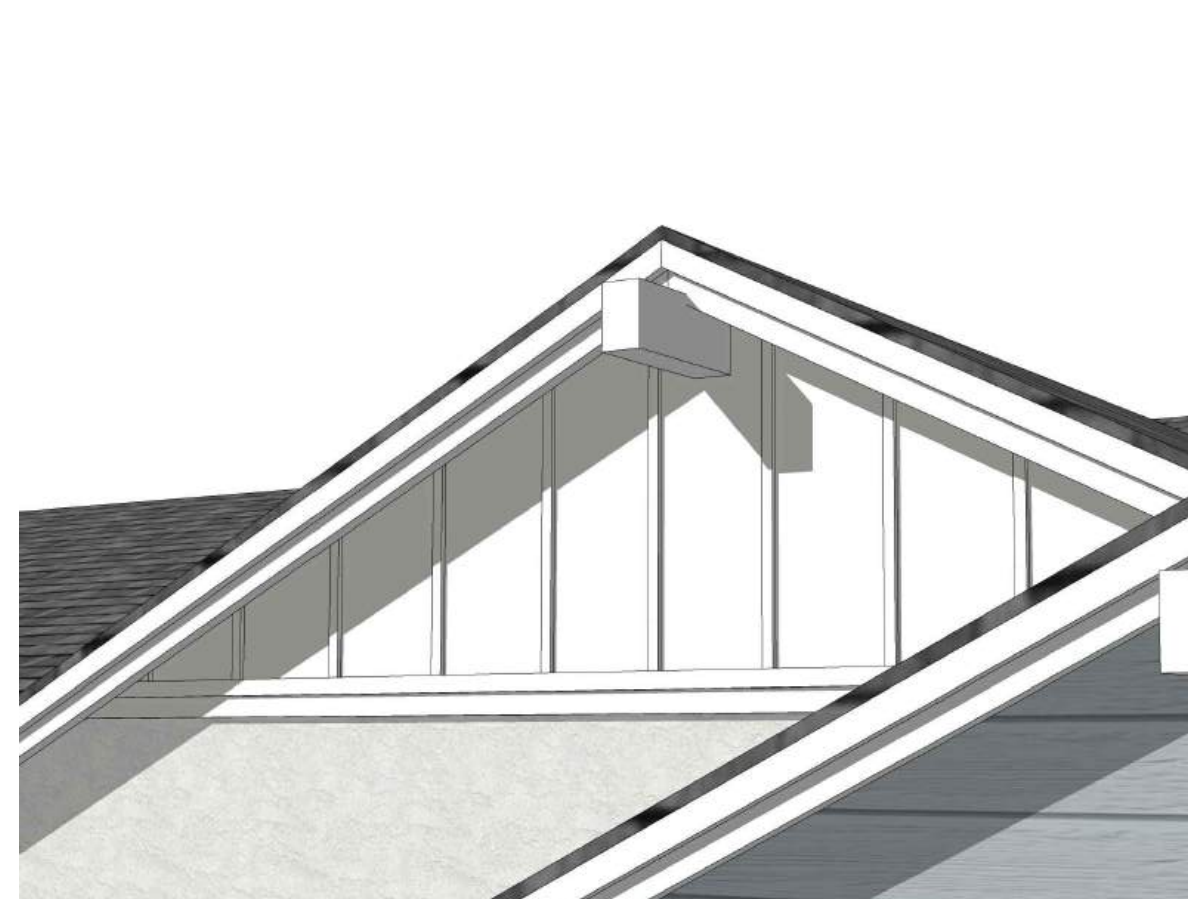
5
EXPOSED TRUSS TAILS w/ GABLE END
OVERHANG AND OUTLOOKER



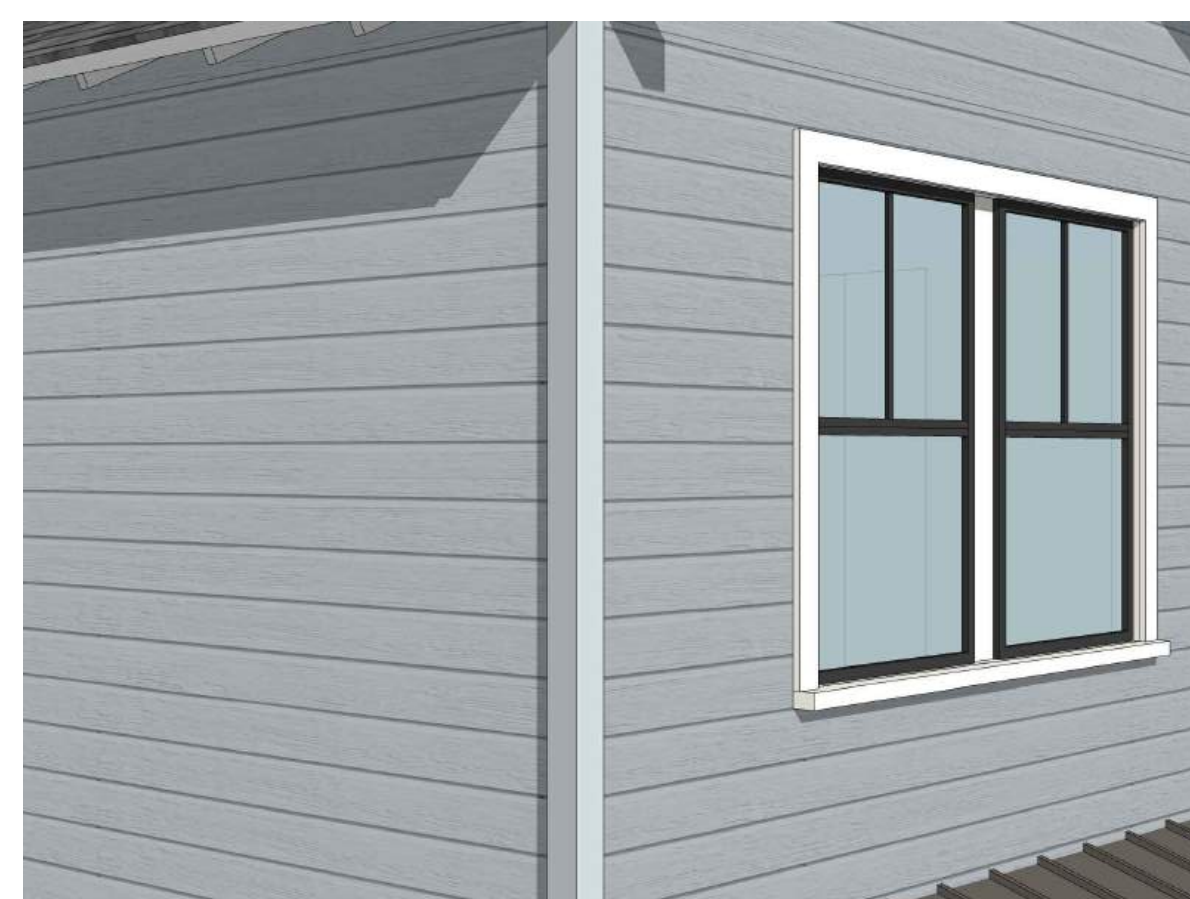
6
FIBER CEMENT WINDOW TRIM
AND SILL



7
DECORATIVE WOOD CORBEL



8
BOARD & BATTEN SIDING



9
HORIZONTAL SIDING w/ CORNER TRIM



10
ROLL UP METAL GARAGE DOOR



11
STANDING SEAM ROOF



12
COMPOSITE SHINGLE

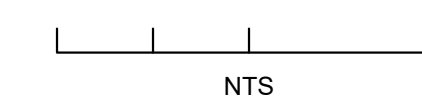


Architecture + Planning
888.456.5849
ktgy.com

Olsen Ranch 212 LLC
530 Technology Drive, Suite 100
Irvine, CA 92618

VINEDO PA 2
PASO ROBLES, CA # 2023-0561

Plot Date: 03.05.2025
Architectural Review Submittal Set: 04.08.2024
2nd Planning Submittal Set: 01.22.2025
PC Meeting Set: 02.19.2025
Updated Meeting Set: 02.25.2025



ENLARGED DETAIL BOARD
STYLE B - COMMERCIAL AGRARIAN

A1.8