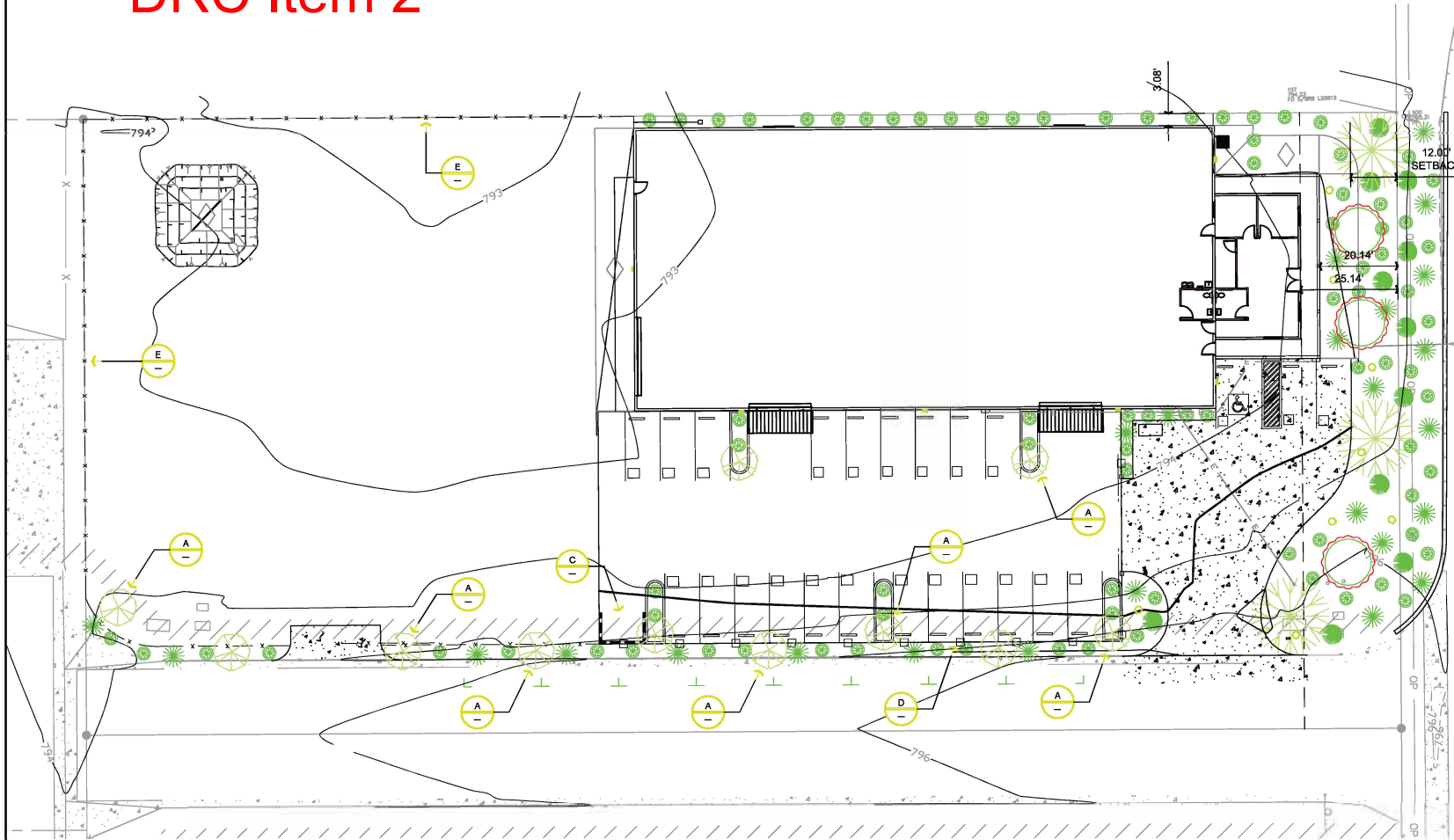


DRC Item 2



LANDSCAPE PLAN

1" = 20'

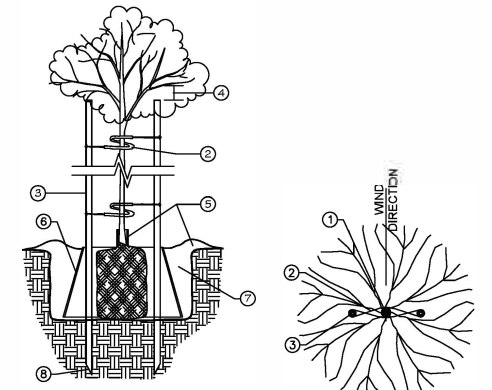


LEGEND

- LANDSCAPE LIGHTING
- EXTERIOR DOWNCAST LIGHTING
- FENCING PER DETAIL "D", ON THIS SHEET.
- FENCING PER DETAIL "E", ON THIS SHEET.
- HVAC CONDENSOR

PLANTING SYMBOL LEGEND

SYMBOL	COMMON NAME (BOTANICAL NAME)	SIZE	QTY	SPACING
	DWARF MAT RUSH (LOMANDRA LONGIFOLIA 'BREEZE')	1 GAL.	85	60"-120" O.C.
	FLAMENCO RED HOT POKER (KNIPHOFIA UVARIA 'FLAMENCO')	1 GAL.	28	
	CLEVELAND SAGE (SALVIA CLEVELANDII)	5 GAL.	11	
	LONDON PLANE TREE (PLATANUS ACERIFOLIA)	24" BOX	11	
	ARBUTUS MULTI-TRUNK (ARBUTUS X 'MARINA')	48" BOX	3	
	COAST LIVE OAK TREE (QUERCUS AGRIFOLIA)	24" BOX	3	
	LIGHT GAUGE METAL LATTICE GRID w/ VINES		2	



NOTE: INSTALL TREE STAKES PERPENDICULAR TO WIND DIRECTION AND INSTALL PLUMB.

TREE NOTES

- TREE TRUNK
- V.I.T.'S "CLINCH TIES, OR EQUAL, FOUR REQUIRED. SECURE TIES TO STAKE WITH 6d GALVANIZED NAILS. (24" - 15 GAL., 18" - 5 GAL.)
- 2" DIAMETER LODGE POLE STAKES, LENGTH AS REQUIRED.
- PROVIDE 6" CLEARANCE FROM TREE BRANCHES TO TOP OF STAKES.
- IN LAWN AREAS, OMIT WATERING BASIN AND INSTALL V.I.T.'S "TRIM GUARDS" AROUND TREE TRUNKS BASE.
- INSTALL DEEP ROOTS NO. 22-30-18RP, DEEP ROOT BARRIER IN ALL PLANT PITS WHEN TREE'S WITHIN 8' OF PAVING.
- SEE PLANT PIT DETAIL "B", ON THIS SHEET, FOR REQUIREMENTS.
- DRIVE TREE STAKES OUTSIDE OF ROOT BALL AND A MINIMUM OF 12" INTO UNDISTURBED SOIL.

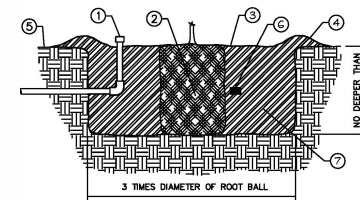
GROUND COVERS

- NEGRANT, 1" - 2" SEE PLANTING NOTES.
- 30% DEER GRASS AND 70% SLENDER VELD'T GRASS MIX SEE PLANTING NOTES.
- MEXICAN PEBBLE, 2" - 4" DIA. SEE PLANTING NOTES.
- SYNTHETIC TURF

PLANTING NOTES

- CONTRACTOR SHALL SUBMIT LABELED PHOTOS OF ALL PLANT MATERIAL, TREES AND GROUNDCOVERS. PHOTOS SHALL BE OF THE SPECIFIED CONTAINER SIZE. PHOTOS SHALL BE SUBMITTED AS A COMPLETE SUBMITTAL PACKAGE FOR REVIEW AND APPROVAL. INCLUDE PHOTOS OF ANY SUBSTITUTES, CLEARLY LABELED.
- ALL PLANTED AREAS SHALL BE CONTINUOUSLY MAINTAINED IN A HEALTHY GROWING CONDITION. SHALL RECEIVE REGULAR PRUNING, FERTILIZING, MOWING, AND TRIMMING, AND SHALL BE KEPT FREE OF WEEDS AND DEBRIS BY THE OWNER OR PERSON IN POSSESSION OF SUCH AREAS. ANY DAMAGED, DEAD OR DECAYING PLANT MATERIAL SHALL BE REPLACED WITHIN THIRTY (30) DAYS FROM THE DATE OF DAMAGE.
- CONTRACTOR SHALL PROVIDE ALL LABOR, MATERIALS, AND EQUIPMENT NECESSARY TO FURNISH AND INSTALL PLANT MATERIAL AS SHOWN ON THE DRAWINGS AND AS DESCRIBED IN THE SPECIFICATIONS.
- PLANT SCHEDULE ON THE DRAWINGS SHALL BE USED AS A GUIDE ONLY. CONTRACTOR SHALL TAKE OFF AND VERIFY SIZES AND QUANTITIES BY PLAN CHECK. NOTIFY PROJECT LANDSCAPE ARCHITECT OF ANY MAJOR DISCREPANCIES.
- UNLESS DESIGNATED ON THE DRAWINGS OTHERWISE, ALL STRUCTURAL AND HARDSCAPE IMPROVEMENTS SHALL BE CONSTRUCTED AND FINISHED AHEAD OF PLANTING.
- ADJUST PLANT MATERIAL AS NECESSARY AROUND UTILITY LOCATIONS. NOTIFY LANDSCAPE ARCHITECT OF ANY MAJOR CONFLICTS OR NECESSARY ADJUSTMENTS.
- SOIL AMENDMENTS AND PREPARATION SHALL CONFORM TO STATE AB1881 AND LOCAL WATER EFFICIENT LANDSCAPE ORDINANCES.
- ALL WORK ON THE IRRIGATION SYSTEM INCLUDING OPERATIONAL TESTS, AND BACKFILLING OF TRENCHES SHALL BE COMPLETED AHEAD OF PLANTING.
- LOCATIONS OF ALL PLANT MATERIAL SHALL BE REVIEWED ON SITE BY THE OWNER'S AUTHORIZED REPRESENTATIVE PRIOR TO PLANTING. THE REPRESENTATIVE RESERVES THE RIGHT TO MAKE ANY ADJUSTMENTS, SUBSTITUTIONS, ADDITIONS, AND DELETIONS TO THE PLANT LAYOUT AS WORK PROGRESSES.
- ALL GROUNDCOVER SHALL BE TRIANGULARLY SPACED, UNLESS OTHERWISE NOTED.
- TREES SHALL BE INSTALLED NO CLOSER THAN TEN (10) FEET FROM UTILITIES.
- TREES TO BE PLANTED WITHIN FIVE (5) FEET OF HARD-SCAPE OR STRUCTURES SHALL BE INSTALLED WITH A ROOT BARRIER.
- ALL PLANTING AREAS TO RECEIVE 3" THICK MIN. LAYER OF 'STRINGY CEDAR' BARK MULCH UNLESS NOTED OTHERWISE. PROVIDE SAMPLE FOR APPROVAL.
- REFER TO PLANTING DETAILS FOR ADDITIONAL INFORMATION.
- PLANT ALL SPECIMEN TREES PER NURSERY RECOMMENDATIONS INCLUDING IRRIGATION AND DRAINAGE.
- COMPOST TO BE ADDED TO LANDSCAPE AREAS AT A RATE OF NO LESS THAN 4 CUBIC YARDS/1000 S.F. TO A DEPTH OF 6 INCHES.

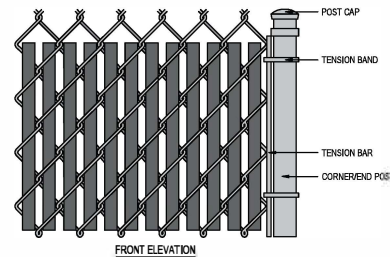
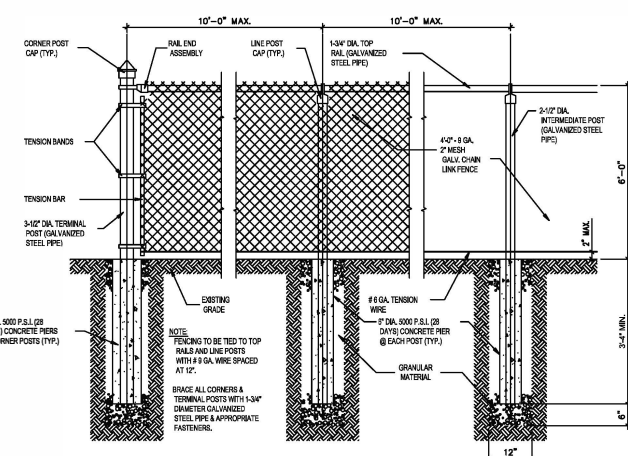
A DOUBLE STAKE AT TREE DETAIL



PLANTING NOTES

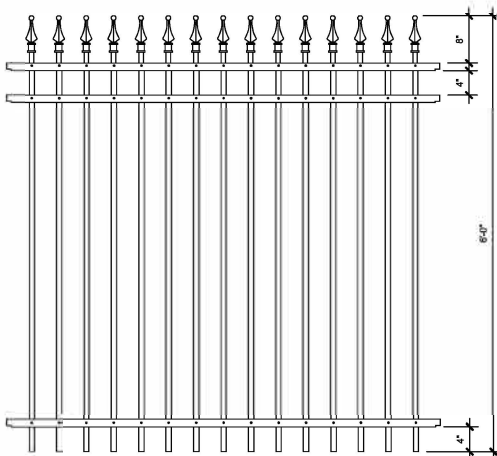
- BUBBLER OR DRIP EMITTER LOCATION-INSIDE WATERING BASIN.
- ROOT BALL.
- 1" LAYER OF NITROLIZED REDWOOD MULCH, OR SEE PLANS ON TYPE OF MUCH TO APPLY. KEEP A 3" CLEARANCE AROUND TRUNK(S) OF ALL SHRUBS AND TREES.
- CONSTRUCTED TAMPED EARTH MOUND FOR WATERING BASIN. LOCATE AT OUTSIDE EDGE OF PLANT PIT. 2" HIGH FOR 1 AND 5 GALLON PLANTS, 4" HIGH FOR 15 GALLON, AND LARGER PLANTS. OMIT IN LAWN AREAS.
- FINISH GRADE.
- "AGRIFORM" 20-15 PLANTING TABLETS. PLACE TABLETS HALFWAY UP AND 1" AWAY FROM ROOT BALL. USE 1 TABLET FOR 1 GALLON, 2 TABLETS FOR 5 GALLON, 3 TABLETS FOR 15 GALLON AND FOR LARGER PLANTS. USE 1 TABLET FOR EACH 1/2" OF TRUNK DIAMETER. PLACE TABS EQUALLY SPACED AROUND ROOT BALL.
- PLANT PIT BACK-FULL. USE NOT AMENDMENTS UNLESS STATED DIFFERENTLY IN PLANTING NOTES. BACK FULL SHALL BE NATIVE SOIL BROKEN UP FINELY AND ROCK (1" OR LARGER) AND OTHER DELETERIOUS REMOVED. REMOVE ALL CLAY SLICKS FROM WALL OF PLANT PIT AND SCARIFY SIDES AND BOTTOM. WATER SETTLE PLANT PIT ONCE BACK-FILLING IS COMPLETE.

B PLANT PIT DETAIL

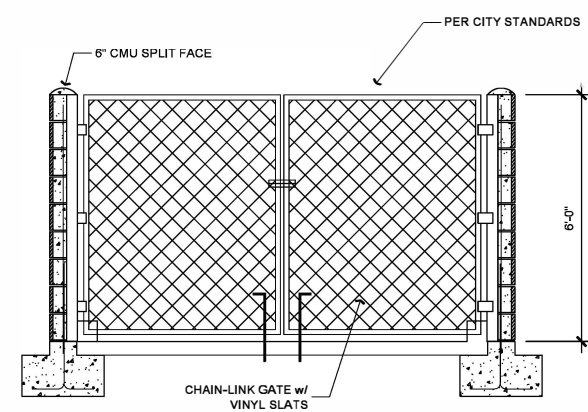


NOTE: CHAIN-LINK FENCE TO BE VINYL-COATED AND COLORED BLACK. THE FENCE SLATS MUST MATCH IN COLOR USED FOR THE WEINMAN PROJECT, LOCATED AT 2931 AMERICAN WAY.

D IRON ROD FENCING DETAIL



C TRASH ENCLOSURE



DRAFTING & DESIGN
CAD DESIGN - AS BUILTS
RESIDENTIAL PLANS
610 10TH ST. SUITE "D"
PASO ROBLES, CA
93446
BUS # (805) 237-0850
FAX # (805) 237-0480

John P. Maggi
Engineering
610 10th Street, Suite D
Paso Robles, CA 93446
805-468-9397



PLAN PREPARED FOR:

JOHN WRIGHT
2931 AMERICAN WAY
PASO ROBLES, CA 93446

REVISION LOG

REV.	DESCRIPTION	DATE

These drawings are the exclusive property of JOHN P. MAGGI Engineering and shall be used solely for the purpose of this project on this site. Any use other than the project upon which it is intended for without the written consent of J.B. Drafting & Design and John Butler II is prohibited.

PROJECT NO. —
FILE NAME WRIGHT, JOHN - CIVIL FINAL.DWG
DRAWN BY JMB # C.D.
DATE 9/26/2022 8:48 PM

SHEET TITLE: LANDSCAPE PLAN

APPROVED
B22-0056
City of Paso Robles
Building Department
9/20/2022

SHEET NUMBER: 6-1