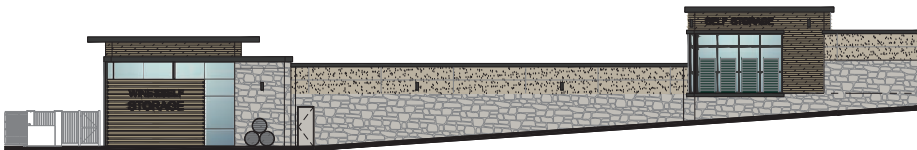


# NUTWOOD SELF-STORAGE

65 NUTWOOD CIRCLE  
PASO ROBLES, CA



DIRECTORY		SHEET INDEX	SITE DATA						
<b>OWNER</b> DRA COMMERCIAL, LLC 355 BRISTOL STREET COSTA MESA, CA 92626 CONTACT: DOUG AYRES TELEPHONE: (714) 231-4232 EMAIL: doug@ayresgroup.net	<b>CIVIL ENGINEER</b> NCE NORTH COAST ENGINEERING 725 ORESTON ROAD, SUITE C PASO ROBLES, CA TELEPHONE: (805) 238-3127 CONTACT: JESSICA HANSEN/JOHN WISSE EMAIL: jessica@nce-engineering.com	<b>ARCHITECTURAL</b> A1 COVER SHEET A2 PRELIMINARY SITE PLAN A3a PRELIMINARY FIRST LEVEL FLOOR PLAN A3b PRELIMINARY SECOND LEVEL FLOOR PLAN A4 ROOF PLAN A5 PRELIMINARY ELEVATIONS A6 PRELIMINARY ELEVATIONS A7 PRELIMINARY ELEVATIONS A8 PRELIMINARY ELEVATIONS A9 PRELIMINARY ELEVATIONS A10 PRELIMINARY ELEVATIONS A11 COLOR MATERIAL BOARD A12 DETAILS A13 LIGHTING PLAN  <b>LANDSCAPE</b> L-1 CONCEPTUAL LANDSCAPE PLAN L-2 PLANTING CONCEPT AND WELD WORKSHEET  <b>CIVIL</b> 1. PRELIMINARY GRADING AND DRAINAGE PLAN 2. PRELIMINARY UNDERGROUND IMPROVEMENT PLAN 3. SITE CROSS SECTIONS 4. SITE CROSS SECTIONS	LOT AREA	± 232,876	SQ. FT.				
				± 5.35	ACRES				
<b>ARCHITECT</b> BRUCE JORDAN ARCHITECT 131 CALLE IGLESIA, SUITE 100 SAN CLEMENTE, CA 92673 TELEPHONE: (949) 388-8090 FACSIMILE: (949) 388-8090 CONTACT: MARCELO QUIROGA EMAIL: mqui@jordanarchitects.com	<b>LANDSCAPE</b> JULIA LANDSCAPE ARCHITECTURE 879 CASS ST., SUITE 306 SAN LEANDRO, CA 94401 TELEPHONE: (925) 235-2231 CONTACT: JIM BURROWS EMAIL: jpb@jla-sls.com		ZONING	C2-PD					
			TOTAL GROSS BLDG. AREA	176,209	SQ. FT.				
			FLOOR AREA RATIO	N/A	N/A				
			LOT COVERAGE	± 108,035	SQ. FT.				
			LOT COVERAGE %	± 46.39	%				
			MAX HEIGHT	50'-0"					
			TOTAL STORAGE PARKING	6	SPACES				
<b>VICINITY MAP</b>			STORAGE BUILDING AREA TABULATIONS (SQUARE FEET)						
			BUILDING	SELF STORAGE	OFFICE	TOTAL			
			BLDG. A - 2 STORY	37,395	1,390	38,785			
			BLDG. B - 2 STORY	97,432	0	97,432			
			BLDG. C - 1 STORY	17,596	0	17,596			
			BLDG. D - 1 STORY	22,396	0	22,396			
			TOTAL BUILDING AREA	174,819	1,390	176,209			
			ESTIMATED NET RENTABLE			±145,000			

BUILDING CONSTRUCTION TYPE: IB  
OCCUPANCY CLASSIFICATION: S-1  
BUILDINGS ARE EQUIPPED THROUGHOUT WITH AUTOMATIC FIRE SPRINKLER SYSTEM IN ACCORDANCE WITH NFPA 13.

NUTWOOD SS  
PASO ROBLES, CA

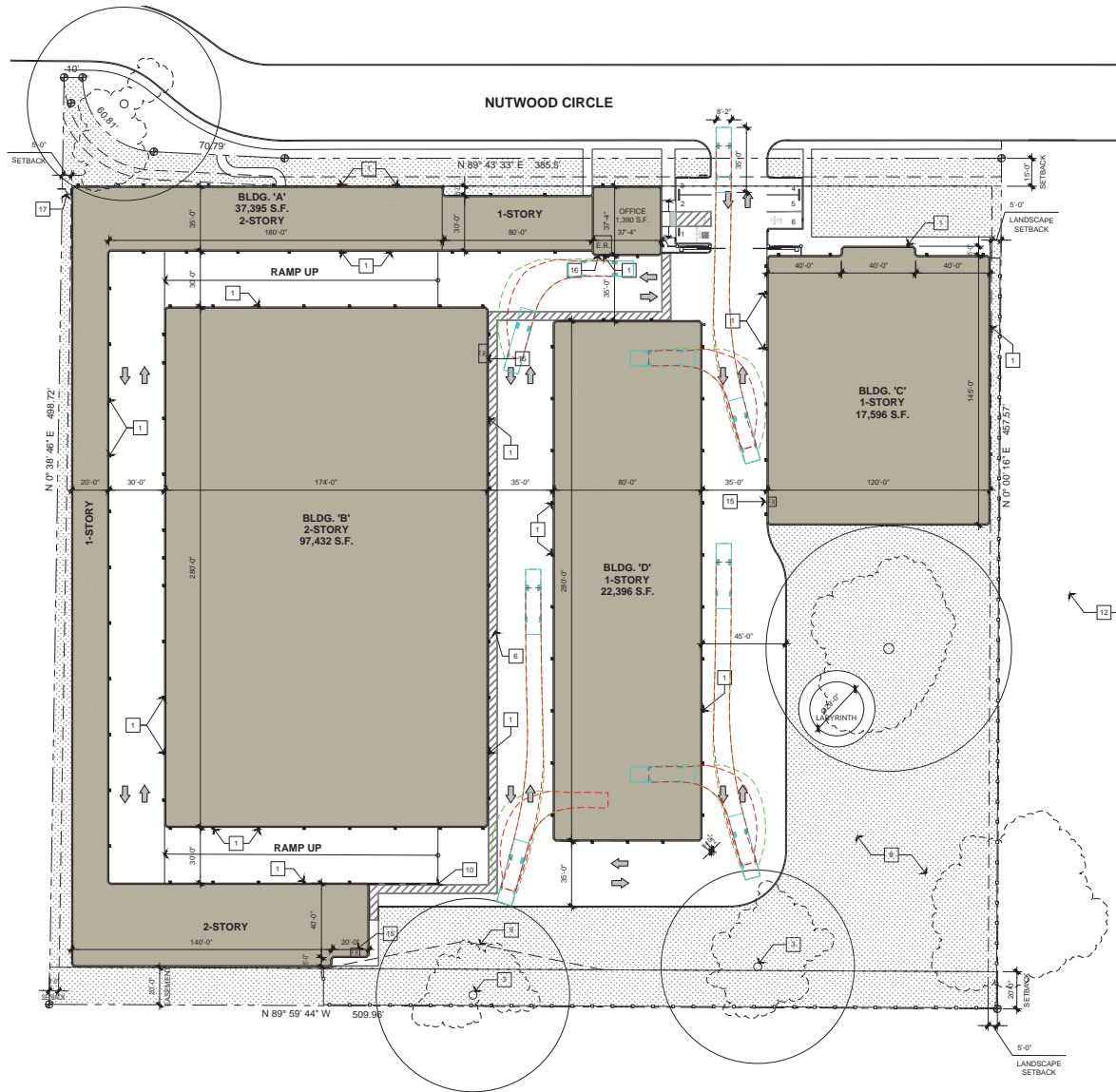
COVER SHEET

THIS DRAWING AND ITS CONTENTS ARE INSTRUMENTS OF SERVICE AND ARE THE PROPERTY OF JORDAN ARCHITECTS, INC. THE USER IS EXPRESSLY INTENDED FOR THE PROJECT NOTED HEREON AND MAY NOT BE REPRODUCED, COPIED, OR OTHERWISE USED WITHOUT THE WRITTEN PERMISSION OF JORDAN ARCHITECTS, INC. (COPYRIGHT) 11 YEAR OF FIRST PUBLICATION 2023 JORDAN ARCHITECTS, INC.

JOB NUMBER: 21-1228  
SCALE: AS NOTED  
DATE: 03/22/2023

A.1

*ja*  
**JORDAN**  
ARCHITECTS  
131 CALLE IGLESIA, SUITE 100  
SAN CLEMENTE, CA 92672  
949.388.8090



**NUTWOOD SS**  
**PASO ROBLES, CA**

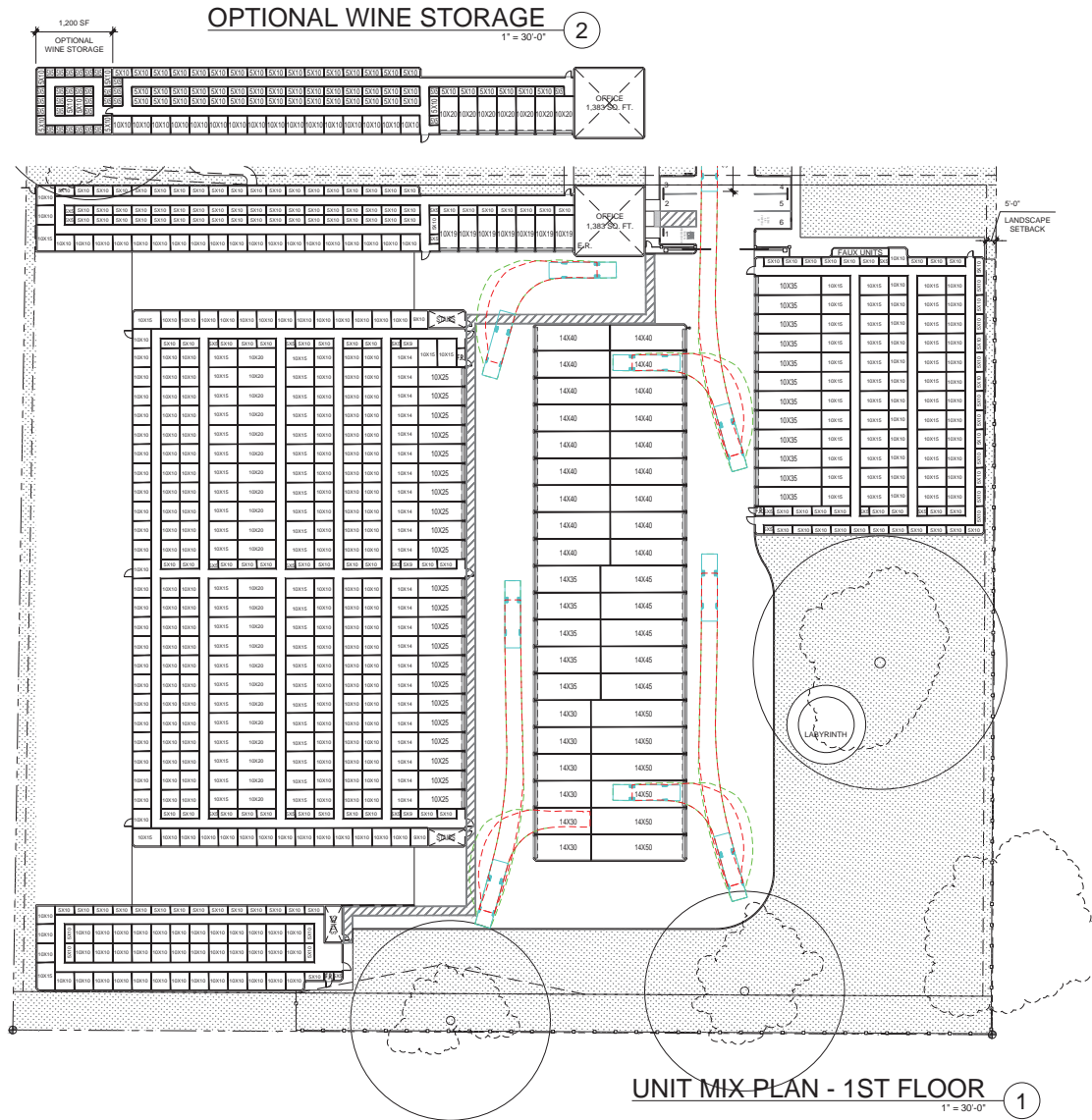
**PRELIMINARY SITE PLAN**

THIS DRAWING AND ITS CONTENTS ARE INSTRUMENTS OF SERVICE AND ARE THE PROPRIETARY PROPERTY OF JORDAN ARCHITECTS, INC. THE USE IS EXPRESSLY INTENDED FOR THE PROJECT AND SITE INDICATED HEREON AND NO OTHER USE OR REPRODUCTION IS ALLOWED WITHOUT THE WRITTEN PERMISSION OF JORDAN ARCHITECTS, INC. (COPYRIGHT) 11/18/2021. PUBLISHED BY JORDAN ARCHITECTS, INC.

JOB NUMBER: 21-1228  
SCALE: 1"=30'-0"  
DATE: 03/22/2023

A.2

**JORDAN ARCHITECTS**  
131 CALLE IGLESIA, SUITE 100  
SAN CLEMENTE, CA 92672  
949.388.8090



NUTWOOD SS  
PASO ROBLES, CA

## PRELIMINARY FIRST LEVEL FLOOR PLAN

THIS DRAWING AND ITS CONTENTS ARE INSTRUMENTS OF SERVICE AND ARE THE PROPRIETARY PROPERTY OF JORDAN ARCHITECTS, INC. THE USER IS EXPRESSLY INTENDED FOR THE PROJECT NOTED HEREIN AND ANY REUSE OR REPRODUCTION IN WHOLE OR IN PART WITHOUT THE WRITTEN PERMISSION OF JORDAN ARCHITECTS, INC. IS PROHIBITED. DATE OF FIRST PUBLICATION: 03/22/2023

JOB NUMBER: 21-1228  
SCALE: 1"=30'-0"  
DATE: 03/22/2023

*ja*  
JORDAN  
ARCHITECTS  
131 CALLE IGLESIA, SUITE 100  
SAN CLEMENTE, CA 92672  
949.388.8090

A.3a



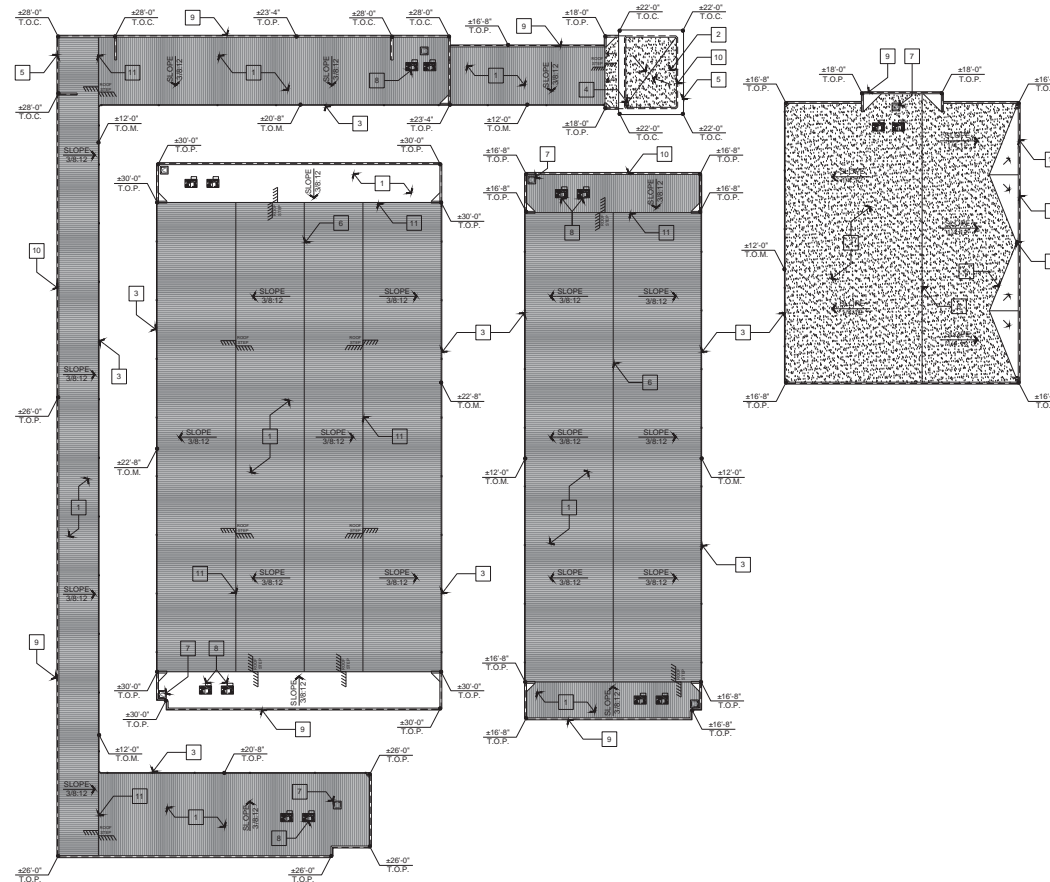
THIS DRAWING AND ITS CONTENTS ARE INSTRUMENTS OF SERVICE AND ARE THE COPYRIGHTED PROPERTY OF JORDAN ARCHITECTS, INC. THE USE IS EXPRESSLY INTENDED FOR THE PROJECT NOTED ABOVE AND MAY NOT BE REUSED OR REPRODUCED IN WHOLE OR IN PART WITHOUT THE WRITTEN PERMISSION OF JORDAN ARCHITECTS, INC. "COPYRIGHT" YEAR OF FIRST PUBLICATION 2020 JORDAN ARCHITECTS, INC.

JOB NUMBER: 21-1228  
SCALE: 1"=30'-0"  
DATE: 03/22/2023

# Exhibit C

## KEY NOTES

- 1 STANDING SEAM METAL ROOF.
- 2 T.P.O. ROOFING SYSTEM.
- 3 GUTTER & DOWNSPOUTS. TYP.
- 4 ROOF DRAIN. TYP.
- 5 CORNICE.
- 6 ROOF CRICKET TYP.
- 7 ROOF HATCH TYP.
- 8 ROOF MOUNTED MECHANICAL UNITS. SCREENED FROM HORIZONTAL LINE OF SIGHT BY BUILDING PARAPET.
- 9 PARAPET.
- 10 WALL BELOW.
- 11 ROOF STEP.



PRELIMINARY ROOF PLAN 1  
1" = 30'-0"

NUTWOOD SS  
PASO ROBLES, CA

PRELIMINARY ROOF PLAN

THIS DRAWING AND ITS CONTENTS ARE INSTRUMENTS OF SERVICE AND ARE THE PROPRIETARY PROPERTY OF JORDAN ARCHITECTS, INC. THE USE IS EXPRESSLY INTENDED FOR THE PROJECT NOTED HEREIN AND MAY NOT BE REPRODUCED OR TRANSMITTED IN ANY FORM OR BY ANY MEANS, WITHOUT THE WRITTEN PERMISSION OF JORDAN ARCHITECTS, INC. COPYRIGHT 2022 BY JORDAN ARCHITECTS, INC.

JOB NUMBER: 21-1228  
SCALE: 1" = 30'-0"  
DATE: 03/22/2023

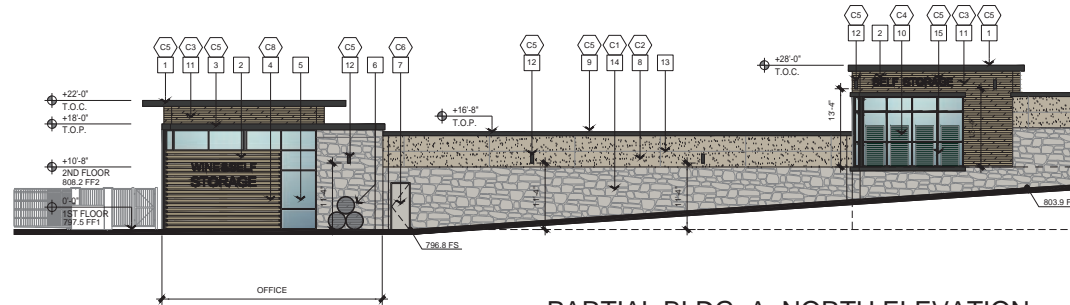
A.4

*ja*  
**JORDAN**  
ARCHITECTS  
131 CALLE IGLESIA, SUITE 100  
SAN CLEMENTE, CA 92672  
949.388.8090

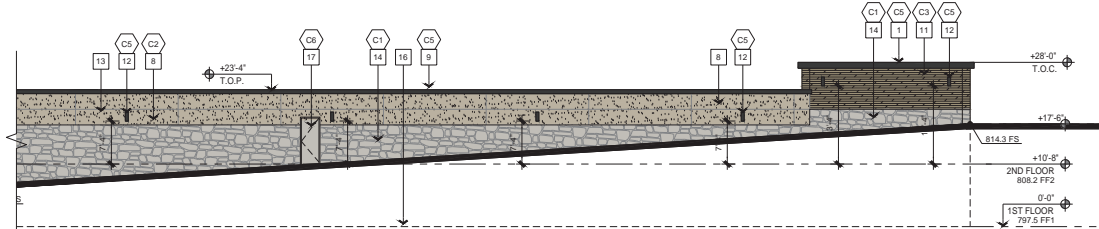
# Exhibit C



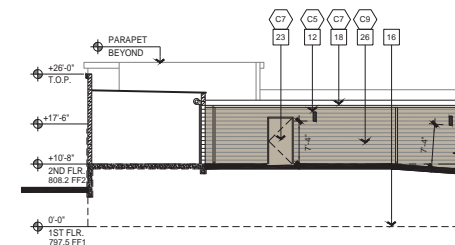
OFFICE EAST ELEVATION 1  
1"=10'



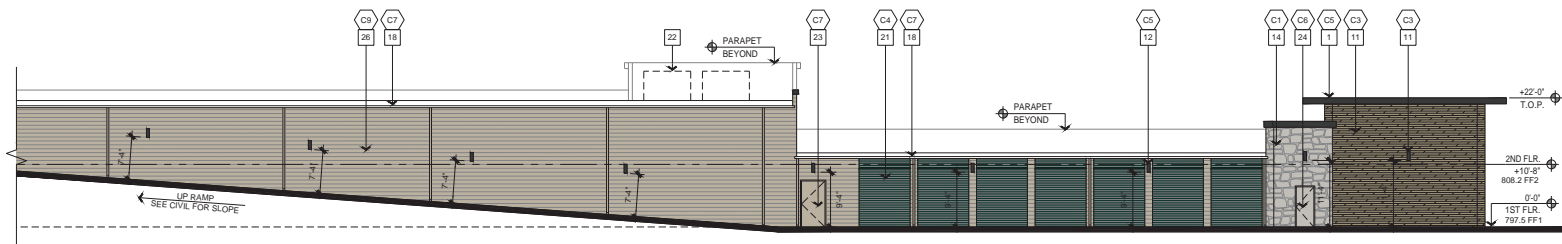
PARTIAL BLDG. A. NORTH ELEVATION 2  
1"=10'



PARTIAL BLDG. A. NORTH ELEVATION 3  
1"=10'



PARTIAL BLDG. A. NORTH INTERIOR ELEVATION 4  
1"=10'



PARTIAL BLDG. A. NORTH INTERIOR ELEVATION 5  
1"=10'

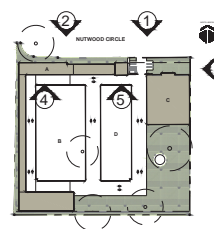
## KEY NOTES

- |   |  |
|---|--|
| 1 PRE-FINISHED METAL CORNICE.                                   | 15 PRE-FINISHED METAL ACCENT.                    |
| 2 WINE AND SELF-STORAGE SIGNAGE BY OTHERS. SEE DETAILS 9.10A.12 | 16 FLOOR LINE BELOW GRADE.                       |
| 3 METAL ACCENT AND PARAPET AT OFFICE                            | 17 STORAGE EGRESS AT SECOND FLOOR EXIT ONLY.     |
| 4 BRISE-SOLEIL FACADE.  | 18 PREFINISHED GUTTER AND DOWNSPOUT SYSTEM.      |
| 5 STOREFRONT GLAZING.   | 19 TRASH ENCLOSURE. SEE DETAILS 5.6.7.A/A.12     |
| 6 FAKE DECORATIVE BARRELS                                       | 20 FIRE RISER ROOM.                              |
| 7 STORAGE EXIT ONLY.  | 21 EXTERIOR ROLL-UP DOORS.                       |
| 8 STUCCO FINISH.  | 22 MECHANICAL UNITS.                             |
| 9 PRE-FINISHED METAL PARAPET.                                   | 23 STORAGE ACCESS.                               |
| 10 FAUX UNITS BEHIND GLAZING.                                   | 24 ELECTRIC ROOM.                                |
| 11 WOOD PANELING.   | 25 STAIR EGRESS.                                 |
| 12 EXTERIOR LIGHT FIXTURE. SEE LIGHTING PLAN.                   | 26 PRECISION C.M.U. BLOCK MASONRY BY ORCO BLOCK. |
| 13 SPLIT FACED C.M.U. BLOCK. STUCCO CONTROL JOINT.              | 27 MASONRY BY ORCO BLOCK.                        |
| 14 STACKED FIELD STONE MASONRY VENEER.                          |  |

## COLOR MATERIAL

- |   |   |
|---|---|
| C1 STACKED FIELD STONE<br>MANUFACTURER: EL DORADO STONE<br>COLOR: FLINTSTONE                              | C2 PAINT<br>MANUFACTURER: DUNN-EDWARDS<br>COLOR: FLINTSTONE (DE 6221)       |
| C3 STUCCO FINISH<br>COLOR: FLINTSTONE (DE 6221)   | C4 BRISE-SOLEIL FACADE<br>MANUFACTURER: FIBERDECK<br>WED BRISE-SOLEIL       |
| C5 WOOD PANELING<br>MANUFACTURER: EL DORADO STONE<br>VINTAGE RANCH<br>COLOR: PARCHWOOD                    | C6 PRECISION C.M.U. BLOCK MASONRY<br>MANUFACTURER: ORCO BLOCK<br>COLOR: TAN |
| C7 FAUX UNITS/ ROLL-UP DOORS<br>MANUFACTURER: JANUS INTERNATIONAL<br>COLOR: LG (FOREST) GREEN             | C8 SPLIT-FACED C.M.U. BLOCK MASONRY<br>COLOR: TAN                           |
| C9 METAL PARAPET/ CORNICE/<br>EXTERIOR LIGHTS<br>MANUFACTURER: DUNN-EDWARDS<br>COLOR: BLACK-TIE (DE 6307) |   |
| C10 PAINT<br>MANUFACTURER: DUNN-EDWARDS<br>COLOR: GRAY PEARL (DEC 795)                                    |   |

## KEYPLAN



NUTWOOD SS  
PASO ROBLES, CA

PRELIMINARY ELEVATION

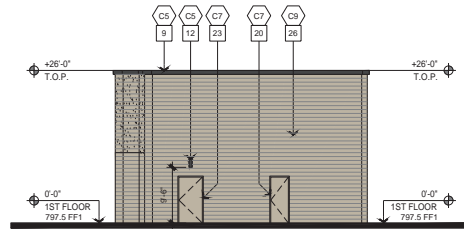
THIS DRAWING AND ITS CONTENTS ARE INSTRUMENTS OF SERVICE AND ARE THE PROPRIETARY PROPERTY OF JORDAN ARCHITECTS, INC. THE USE IS EXPRESSLY INTENDED FOR THE PROJECT NOTED HEREIN AND MAY NOT BE REPRODUCED OR TRANSMITTED IN ANY FORM OR BY ANY MEANS WITHOUT THE WRITTEN PERMISSION OF JORDAN ARCHITECTS, INC. (COPYRIGHT) 100% OF FIRST PUBLICATION AND JORDAN ARCHITECTS, INC.

JOB NUMBER: 21-1228  
SCALE: 1"=10'  
DATE: 03/22/2023

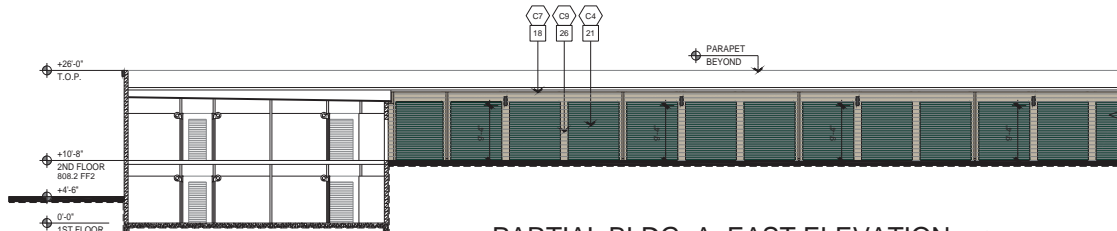




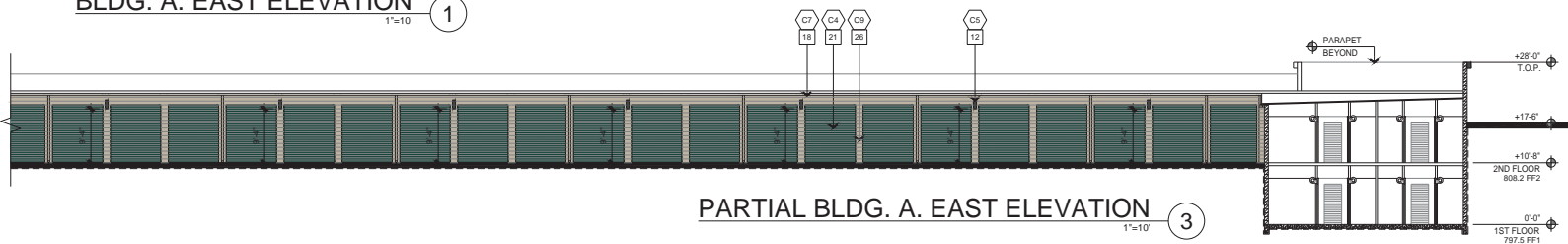
# Exhibit C



BLDG. A. EAST ELEVATION 1  
1"=10'



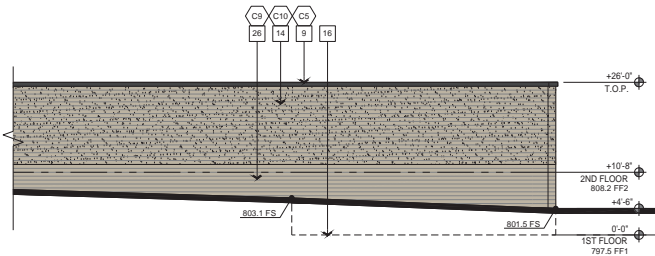
PARTIAL BLDG. A. EAST ELEVATION 2  
1"=10'



PARTIAL BLDG. A. EAST ELEVATION 3  
1"=10'



PARTIAL BLDG. A. WEST ELEVATION 4  
1"=10'



PARTIAL BLDG. A. WEST ELEVATION 5  
1"=10'

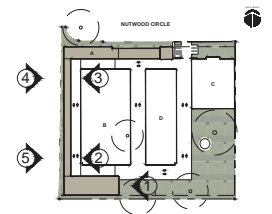
## KEY NOTES

- |   |  |
|---|--|
| 1 PRE-FINISHED METAL CORNICE.                                   | 15 PRE-FINISHED METAL ACCENT.                      |
| 2 WINE AND SELF-STORAGE SIGNAGE BY OTHERS. SEE DETAILS 9.10A.12 | 16 FLOOR LINE BELOW GRADE.                         |
| 3 METAL ACCENT AND PARAPET AT OFFICE                            | 17 STORAGE EGRESS AT SECOND FLOOR EXIT ONLY.       |
| 4 BRISE-SOLEIL FACADE.  | 18 PREFINISHED GUTTER AND DOWNSPOUT SYSTEM.        |
| 5 STOREFRONT GLAZING.   | 19 TRASH ENCLOSURE. SEE DETAILS 5.6.7.A/A.12       |
| 6 FAKE DECORATIVE BARRELS                                       | 20 FIRE RISER ROOM.                                |
| 7 STORAGE EXIT ONLY.  | 21 EXTERIOR ROLL-UP DOORS.                         |
| 8 STUCCO FINISH.  | 22 MECHANICAL UNITS.                               |
| 9 PRE-FINISHED METAL PARAPET.                                   | 23 STORAGE ACCESS.                                 |
| 10 FAUX UNITS BEHIND GLAZING.                                   | 24 ELECTRIC ROOM.                                  |
| 11 WOOD PANELING.   | 25 STAIR EGRESS.                                   |
| 12 EXTERIOR LIGHT FIXTURE. SEE LIGHTING PLAN.                   | 26 PRECISION C.M.U. BLOCK MASONRY BY ORCO BLOCK.   |
| 13 STUCCO CONTROL JOINT.  | 27 SPLIT FACED C.M.U. BLOCK MASONRY BY ORCO BLOCK. |
| 14 STACKED FIELD STONE MASONRY VENEER.                          |  |

## COLOR MATERIAL

- |   |  |
|---|--|
| C5 STACKED FIELD STONE<br>MANUFACTURER: EL DORADO STONE<br>COLOR: ANDANTE                                 | C26 PAINT<br>MANUFACTURER: DUNN-EDWARDS<br>COLOR: FLINTSTONE (DE 6221)         |
| C9 STUCCO FINISH<br>COLOR: FLINTSTONE (DE 6221)   | C16 BRISE-SOLEIL FACADE<br>MANUFACTURER: FIBERDECK<br>WED BRISE-SOLEIL         |
| C11 WOOD PANELING<br>MANUFACTURER: EL DORADO STONE<br>VINTAGE RANCH<br>COLOR: PARCHWOOD                   | C25 PRECISION C.M.U. BLOCK MASONRY<br>MANUFACTURER: ORCO BLOCK<br>COLOR: TAN   |
| C4 FAUX UNITS/ ROLL-UP DOORS<br>MANUFACTURER: JANUS INTERNATIONAL<br>COLOR: LG (FOREST) GREEN             | C27 SPLIT-FACED C.M.U. BLOCK MASONRY<br>MANUFACTURER: ORCO BLOCK<br>COLOR: TAN |
| C1 METAL PARAPET/ CORNICE/<br>EXTERIOR LIGHTS<br>MANUFACTURER: DUNN-EDWARDS<br>COLOR: BLACK-TIE (DE 6307) |  |
| C26 PAINT<br>MANUFACTURER: DUNN-EDWARDS<br>COLOR: GRAY PEARL (DEC 795)                                    |  |

## KEYPLAN



NUTWOOD SS  
PASO ROBLES, CA

PRELIMINARY ELEVATION

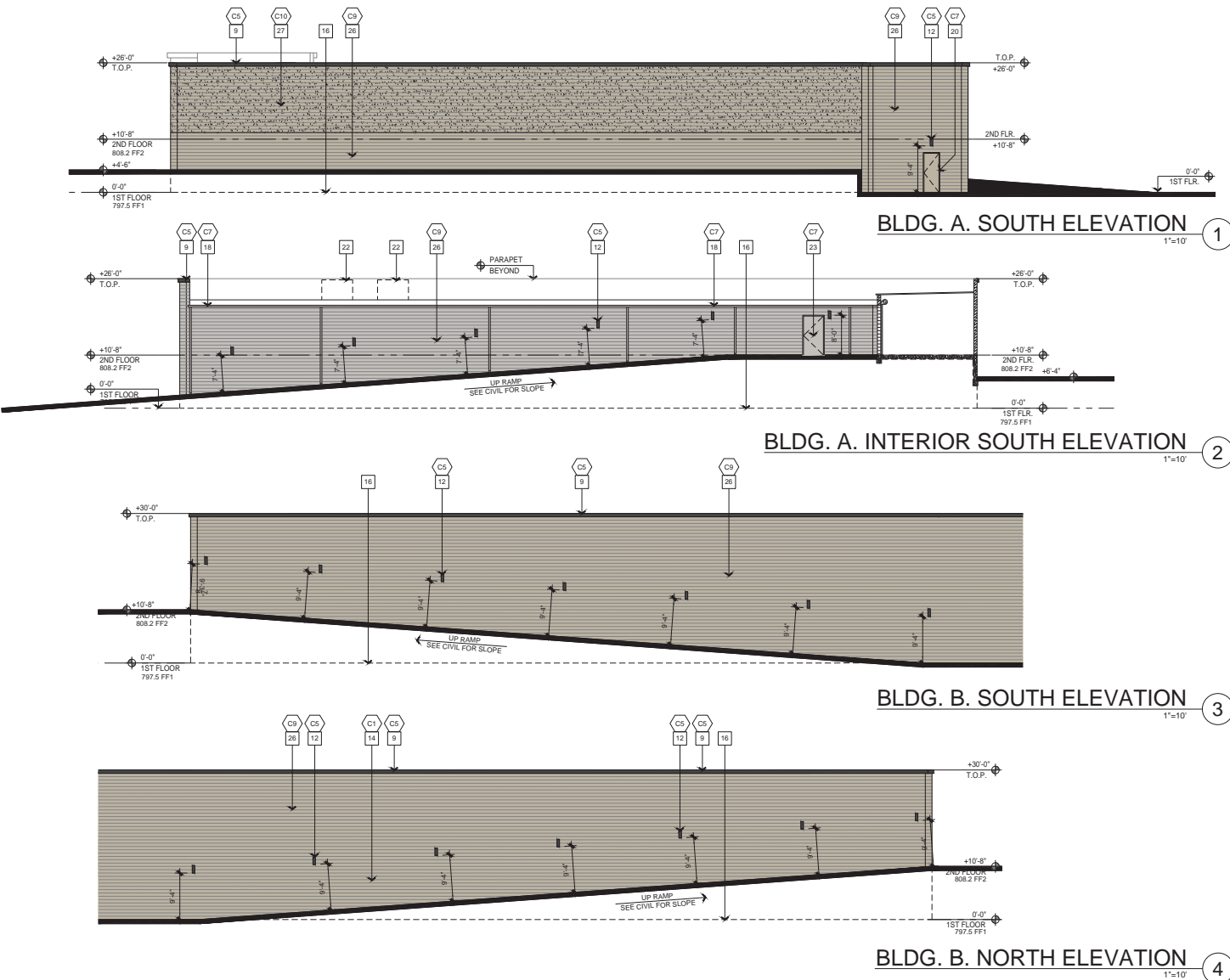
THIS DRAWING AND ITS CONTENTS ARE INSTRUMENTS OF SERVICE AND ARE THE COPYRIGHTED PROPERTY OF JORDAN ARCHITECTS, INC. THIS USE IS EXPRESSLY INTENDED FOR THE PROJECT NOTED HEREIN AND MAY NOT BE REPRODUCED OR TRANSMITTED IN ANY FORM OR BY ANY MEANS WITHOUT THE WRITTEN PERMISSION OF JORDAN ARCHITECTS, INC. (COPYRIGHT) 11 YEAR OF FIRST PUBLICATION 2022 JORDAN ARCHITECTS, INC.

JOB NUMBER: 21-1228  
SCALE: 1"=10'  
DATE: 03/22/2023

A.6

**jordan**  
JORDAN  
ARCHITECTS  
131 CALLE IGLESIA, SUITE 100  
SAN CLEMENTE, CA 92672  
949.388.8090

# Exhibit C



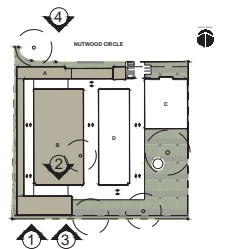
## KEY NOTES

- |   |  |
|---|--|
| 1 PRE-FINISHED METAL CORNICE.                                   | 15 PRE-FINISHED METAL ACCENT.                      |
| 2 WINE AND SELF-STORAGE SIGNAGE BY OTHERS. SEE DETAILS 9.10A.12 | 16 FLOOR LINE BELOW GRADE.                         |
| 3 METAL ACCENT AND PARAPET AT OFFICE                            | 17 STORAGE EGRESS AT SECOND FLOOR EXIT ONLY.       |
| 4 BRISE-SOLEIL FACADE.  | 18 PREFINISHED GUTTER AND DOWNSPOUT SYSTEM.        |
| 5 STOREFRONT GLAZING.   | 19 TRASH ENCLOSURE. SEE DETAILS 5.6.7.A/A.12       |
| 6 FAKE DECORATIVE BARRELS                                       | 20 FIRE RISER ROOM.                                |
| 7 STORAGE EXIT ONLY.  | 21 EXTERIOR ROLL-UP DOORS.                         |
| 8 STUCCO FINISH.  | 22 MECHANICAL UNITS.                               |
| 9 PRE-FINISHED METAL PARAPET.                                   | 23 STORAGE ACCESS.                                 |
| 10 FAUX UNITS BEHIND GLAZING.                                   | 24 ELECTRIC ROOM.                                  |
| 11 WOOD PANELING.   | 25 STAIR EGRESS.                                   |
| 12 EXTERIOR LIGHT FIXTURE. SEE LIGHTING PLAN.                   | 26 PRECISION C.M.U. BLOCK MASONRY BY ORCO BLOCK.   |
| 13 STUCCO CONTROL JOINT.  | 27 SPLIT FACED C.M.U. BLOCK MASONRY BY ORCO BLOCK. |
| 14 STACKED FIELD STONE MASONRY VENEER.                          |  |

## COLOR MATERIAL

- |   |   |
|---|---|
| CS STUCCO FINISH<br>COLOR: FLINTSTONE (DE 6221)   | CS PAINT<br>MANUFACTURER: DUNN-EDWARDS<br>COLOR: FLINTSTONE (DE 6221)         |
| CS WOOD PANELING<br>MANUFACTURER: EL DORADO STONE<br>COLOR: PARCHWOOD                                     | CS BRISE-SOLEIL FACADE<br>MANUFACTURER: FIBERDECK<br>WEO BRISE-SOLEIL         |
| CS FAUX UNITS/ ROLL-UP DOORS<br>MANUFACTURER: JANUS INTERNATIONAL<br>COLOR: LG (FOREST) GREEN             | CS PRECISION C.M.U. BLOCK MASONRY<br>MANUFACTURER: ORCO BLOCK<br>COLOR: TAN   |
| CS METAL PARAPET/ CORNICE/<br>EXTERIOR LIGHTS<br>MANUFACTURER: DUNN-EDWARDS<br>COLOR: BLACK-TIE (DE 6307) | CS SPLIT-FACED C.M.U. BLOCK MASONRY<br>MANUFACTURER: ORCO BLOCK<br>COLOR: TAN |
| CS PAINT<br>MANUFACTURER: DUNN-EDWARDS<br>COLOR: GRAY PEARL (DEC 795)                                     |   |

## KEYPLAN



**NUTWOOD SS**  
**PASO ROBLES, CA**

**PRELIMINARY ELEVATION**

THIS DRAWING AND ITS CONTENTS ARE INSTRUMENTS OF SERVICE AND ARE THE PROPERTY OF JORDAN ARCHITECTS, INC. THE USE IS EXPRESSLY INTENDED FOR THE PROJECT NOTED HEREIN AND MAY NOT BE REPRODUCED OR TRANSMITTED IN ANY FORM OR BY ANY MEANS WITHOUT THE WRITTEN PERMISSION OF JORDAN ARCHITECTS, INC. (COPYRIGHT) 11 YEAR OF FIRST PUBLICATION 2022 JORDAN ARCHITECTS, INC.

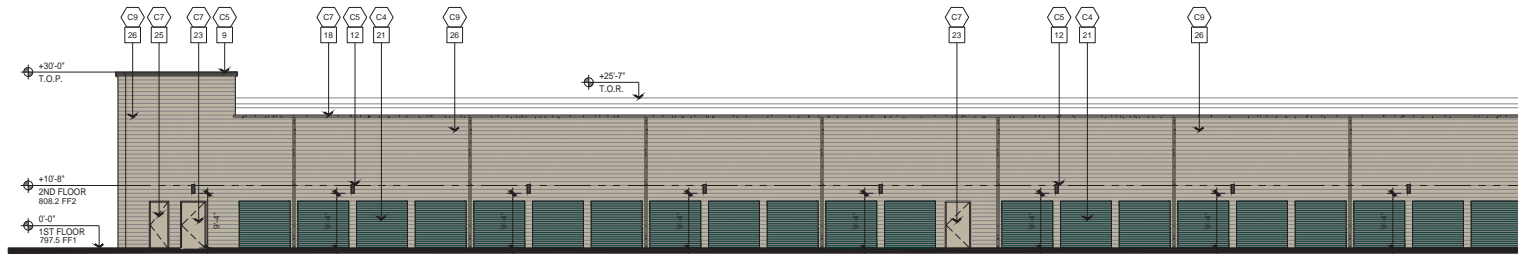
JOB NUMBER: 21-1228  
SCALE: 1"=10'  
DATE: 03/22/2023

**A.7**



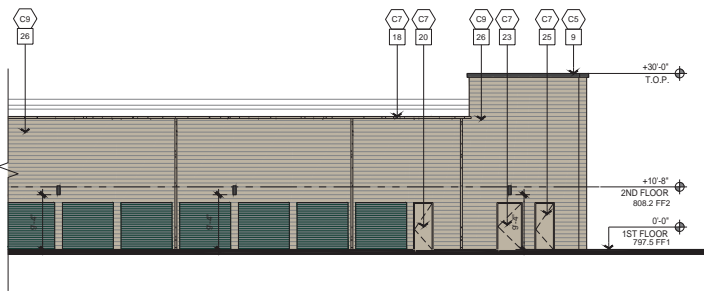


# Exhibit C



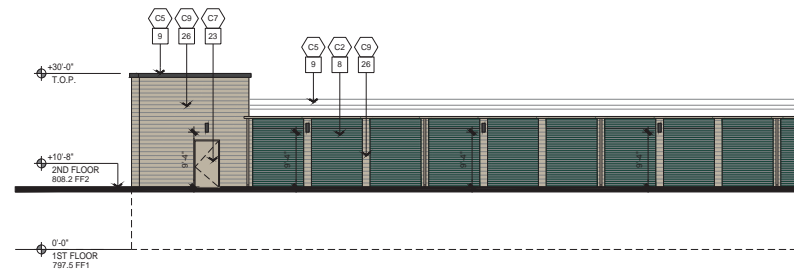
PARTIAL BLDG. B. EAST ELEVATION ①

1"=10'



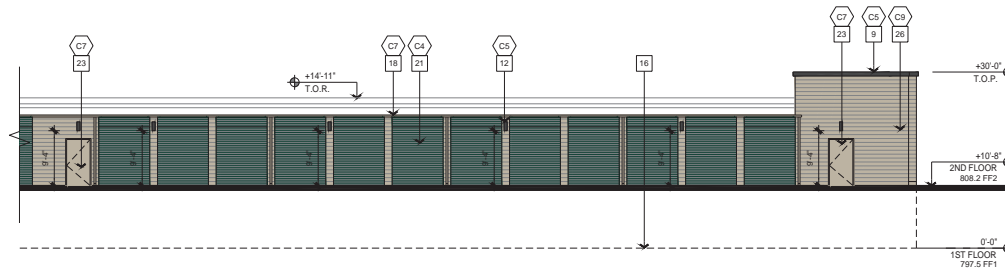
PARTIAL BLDG. B. EAST ELEVATION ②

1"=10'



PARTIAL BLDG. B. WEST ELEVATION ③

1"=10'



PARTIAL BLDG. B. WEST ELEVATION ④

1"=10'

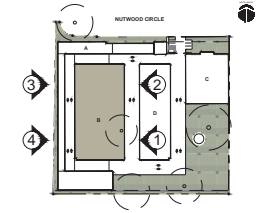
## KEY NOTES

- |   |  |
|---|--|
| 1 PRE-FINISHED METAL CORNICE.                                   | 15 PRE-FINISHED METAL ACCENT.                      |
| 2 WINE AND SELF-STORAGE SIGNAGE BY OTHERS. SEE DETAILS 9.10A.12 | 16 FLOOR LINE BELOW GRADE.                         |
| 3 METAL ACCENT AND PARAPET AT OFFICE                            | 17 STORAGE EGRESS AT SECOND FLOOR EXIT ONLY.       |
| 4 BRISE-SOLEIL FACADE.  | 18 PREFINISHED GUTTER AND DOWNSPOUT SYSTEM.        |
| 5 STOREFRONT GLAZING.   | 19 TRASH ENCLOSURE. SEE DETAILS 5.6.7.8/1A.12      |
| 6 FAKE DECORATIVE BARRELS                                       | 20 FIRE RISER ROOM.                                |
| 7 STORAGE EXIT ONLY.  | 21 EXTERIOR ROLL-UP DOORS.                         |
| 8 STUCCO FINISH.  | 22 MECHANICAL UNITS.                               |
| 9 PRE-FINISHED METAL PARAPET.                                   | 23 STORAGE ACCESS.                                 |
| 10 FAUX UNITS BEHIND GLAZING.                                   | 24 ELECTRIC ROOM.                                  |
| 11 WOOD PANELING.   | 25 STAIR EGRESS.                                   |
| 12 EXTERIOR LIGHT FIXTURE. SEE LIGHTING PLAN.                   | 26 PRECISION C.M.U. BLOCK MASONRY BY ORCO BLOCK.   |
| 13 STUCCO CONTROL JOINT.  | 27 SPLIT FACED C.M.U. BLOCK MASONRY BY ORCO BLOCK. |
| 14 STACKED FIELD STONE MASONRY VENEER.                          |  |

## COLOR MATERIAL

- |  |   |
|--|---|
| C1 STACKED FIELD STONE MANUFACTURER: EL DORADO STONE COLOR: ANDANTE                              | C2 PAINT MANUFACTURER: DUNN-EDWARDS COLOR: FLINTSTONE (DE 6221)         |
| C3 STUCCO FINISH COLOR: FLINTSTONE (DE 6221)   | C4 BRISE-SOLEIL FACADE MANUFACTURER: FIBERDECK WOOD BRISE-SOLEIL        |
| C5 WOOD PANELING MANUFACTURER: EL DORADO STONE VINTAGE RANCH COLOR: PARCWOOD                     | C6 PRECISION C.M.U. BLOCK MASONRY MANUFACTURER: ORCO BLOCK COLOR: TAN   |
| C7 FAUX UNITS/ ROLL-UP DOORS MANUFACTURER: JANUS INTERNATIONAL COLOR: LG (FOREST) GREEN          | C8 SPLIT-FACED C.M.U. BLOCK MASONRY MANUFACTURER: ORCO BLOCK COLOR: TAN |
| C9 METAL PARAPET/ CORNICE/ EXTERIOR LIGHTS MANUFACTURER: DUNN-EDWARDS COLOR: BLACK-TIE (DE 6307) |   |
| C10 PAINT MANUFACTURER: DUNN-EDWARDS COLOR: GRAY PEARL (DEC 795)                                 |   |

## KEYPLAN



NUTWOOD SS  
PASO ROBLES, CA

PRELIMINARY ELEVATION

THIS DRAWING AND ITS CONTENTS ARE INSTRUMENTS OF SERVICE AND ARE THE COPYRIGHTED PROPERTY OF JORDAN ARCHITECTS, INC. THIS USE IS EXPRESSLY INTENDED FOR THE PROJECT NOTED HEREIN AND MAY NOT BE REPRODUCED OR TRANSMITTED IN ANY FORM OR BY ANY MEANS WITHOUT THE WRITTEN PERMISSION OF JORDAN ARCHITECTS, INC. (COPYRIGHT) 11/18/2022

JOB NUMBER: 21-1228  
SCALE: 1"=10'  
DATE: 03/22/2023

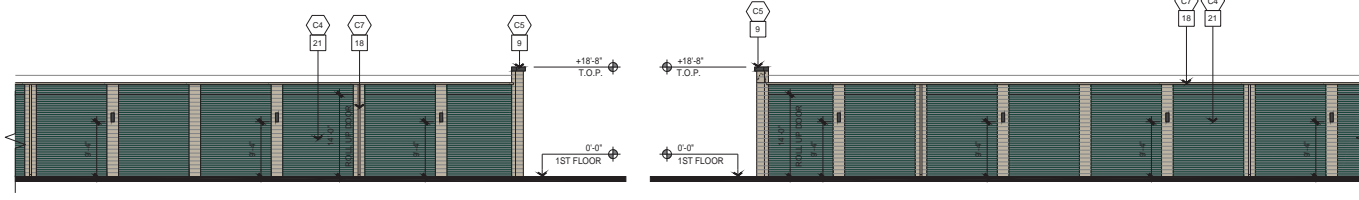
A.8



# Exhibit C



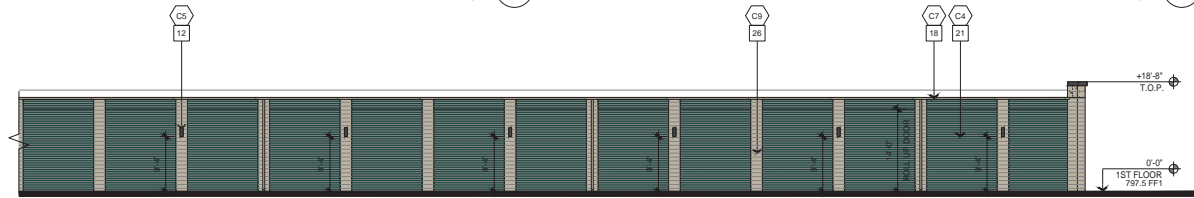
PARTIAL BLDG. D. WEST ELEVATION 1  
1"=10'



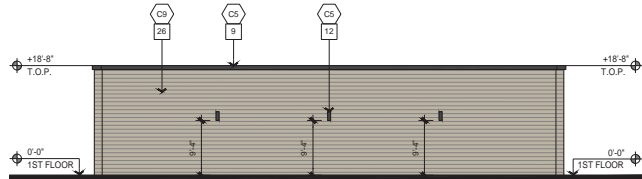
PARTIAL BLDG. D. WEST ELEVATION 2  
1"=10'



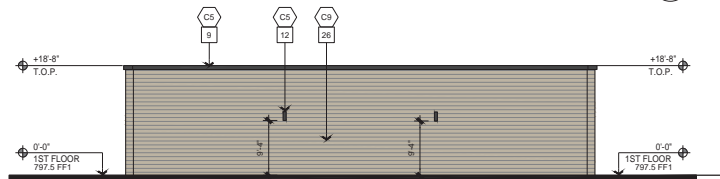
PARTIAL BLDG. D. EAST ELEVATION 3  
1"=10'



PARTIAL BLDG. D. EAST ELEVATION 4  
1"=10'



BLDG. D. SOUTH ELEVATION 5  
1"=10'



BLDG. D. NORTH ELEVATION 6  
1"=10'

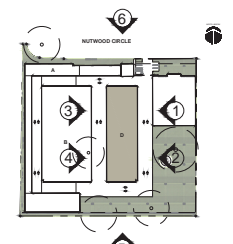
## KEY NOTES

- |   |  |
|---|--|
| 1 PRE-FINISHED METAL CORNICE.                                   | 15 PRE-FINISHED METAL ACCENT.                      |
| 2 WINE AND SELF-STORAGE SIGNAGE BY OTHERS. SEE DETAILS 9.10A.12 | 16 FLOOR LINE BELOW GRADE.                         |
| 3 METAL ACCENT AND PARAPET AT OFFICE                            | 17 STORAGE EGRESS AT SECOND FLOOR EXIT ONLY.       |
| 4 BRISE-SOLEIL FACADE.  | 18 PREFINISHED GUTTER AND DOWNSPOUT SYSTEM.        |
| 5 STOREFRONT GLAZING.   | 19 TRASH ENCLOSURE. SEE DETAILS 5.6.7.A/1.2        |
| 6 FAKE DECORATIVE BARRELS                                       | 20 FIRE RISER ROOM.                                |
| 7 STORAGE EXIT ONLY.  | 21 EXTERIOR ROLL-UP DOORS.                         |
| 8 STUCCO FINISH.  | 22 MECHANICAL UNITS.                               |
| 9 PRE-FINISHED METAL PARAPET.                                   | 23 STORAGE ACCESS.                                 |
| 10 FAUX UNITS BEHIND GLAZING.                                   | 24 ELECTRIC ROOM.                                  |
| 11 WOOD PANELING.   | 25 STAIR EGRESS.                                   |
| 12 EXTERIOR LIGHT FIXTURE. SEE LIGHTING PLAN.                   | 26 PRECISION C.M.U. BLOCK MASONRY BY ORCO BLOCK.   |
| 13 STUCCO CONTROL JOINT.  | 27 SPLIT FACED C.M.U. BLOCK MASONRY BY ORCO BLOCK. |
| 14 STACKED FIELD STONE MASONRY VENEER.                          |  |

## COLOR MATERIAL

- |   |   |
|---|---|
| C1 STACKED FIELD STONE<br>MANUFACTURER: EL DORADO STONE<br>COLOR: ANDANTE                                 | C2 PAINT<br>MANUFACTURER: DUNN EDWARDS<br>COLOR: FLINTSTONE (DE 6221)         |
| C3 STUCCO FINISH<br>COLOR: FLINTSTONE (DE 6221)   | C4 BRISE-SOLEIL FACADE<br>MANUFACTURER: FIBERDECK<br>WED BRISE-SOLEIL         |
| C5 WOOD PANELING<br>MANUFACTURER: EL DORADO STONE<br>VINTAGE RANCH<br>COLOR: PARCHEWOOD                   | C6 PRECISION C.M.U. BLOCK MASONRY<br>MANUFACTURER: ORCO BLOCK<br>COLOR: TAN   |
| C7 FAUX UNITS/ ROLL-UP DOORS<br>MANUFACTURER: JANUS INTERNATIONAL<br>COLOR: LG (FOREST) GREEN             | C8 SPLIT-FACED C.M.U. BLOCK MASONRY<br>MANUFACTURER: ORCO BLOCK<br>COLOR: TAN |
| C9 METAL PARAPET/ CORNICE/<br>EXTERIOR LIGHTS<br>MANUFACTURER: DUNN EDWARDS<br>COLOR: BLACK-TIE (DE 6307) |   |
| C10 PAINT<br>MANUFACTURER: DUNN EDWARDS<br>COLOR: GRAY PEARL (DEC 795)                                    |   |

## KEYPLAN



NUTWOOD SS  
PASO ROBLES, CA

PRELIMINARY ELEVATION

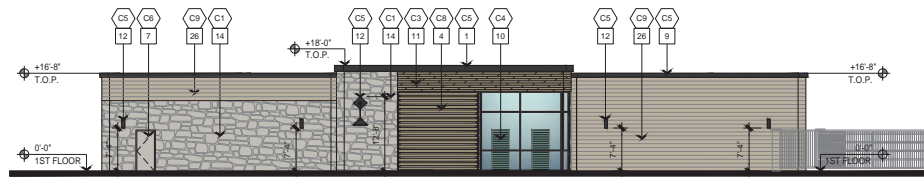
THIS DRAWING AND ITS CONTENTS ARE INSTRUMENTS OF SERVICE AND ARE THE PROPRIETARY PROPERTY OF JORDAN ARCHITECTS, INC. THE USE IS EXPRESSLY INTENDED FOR THE PROJECT NOTED HEREIN AND MAY NOT BE REPRODUCED OR TRANSMITTED IN ANY FORM OR BY ANY MEANS, WITHOUT THE WRITTEN PERMISSION OF JORDAN ARCHITECTS, INC. (COPYRIGHT) 11 YEAR OF FIRST PUBLICATION 2022 JORDAN ARCHITECTS, INC.

JOB NUMBER: 21-1228  
SCALE: 1"=10'  
DATE: 03/22/2023

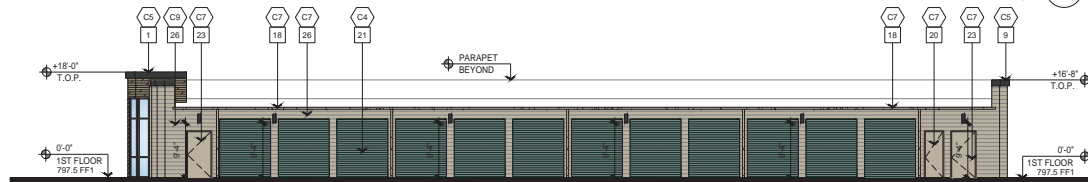
A.9



## Exhibit C



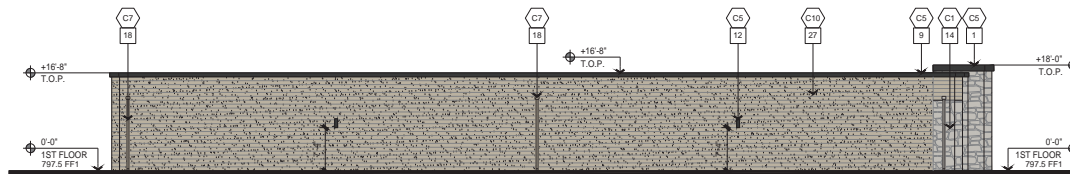
BLDG. C. NORTH ELEVATION 1



BLDG. C. WEST ELEVATION 2



BLDG. C. SOUTH ELEVATION 3  
1"=10'













BLDG. C EAST ELEVATION 4

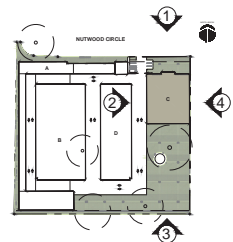
## KEY NOTES

1	PRE-FINISHED METAL CORNICE.	16	PRE-FINISHED METAL ACCENT.
2	WINE AND SELF-STORAGE SIGNAGE BY OTHERS. SEE DETAILS 9.10A, 12.	17	FLOOR LINE BELOW GRADE.
3	METAL ACENT AND PARAPET	17	STORAGE EGRESS AT SECOND FLOOR EXIT ONLY.
4	BRSE-SOLEIL FACADE.	18	PREFINISHED GUTTER AND DOWNSPOUT SYSTEM.
5	STOREFRONT GLAZING.	19	TRASH ENCLOSURE. SEE DETAILS 5.0.7, 8.0.7, 12.
6	FAKE DECORATIVE BARRELS	20	FIRE RISER ROOM.
7	STORAGE EXIT ONLY.	21	EXTERIOR ROLL-UP DOORS.
8	STUCCO FINISH.	22	MECHANICAL UNITS.
9	PRE-FINISHED METAL PARAPET.	23	STORAGE ACCESS.
10	FAUX UNITS BEHIND GLAZING.	24	ELECTRIC ROOM.
11	WOOD PANELING.	25	TRAP EGRESS.
12	EXTERIOR LIGHT FIXTURE. SEE LIGHTING PLAN.	26	PRECISION C.M.U. BLOCK, MASONRY BY CRICK BLOCK.
13	STUCCO CONTROL JOINT.	27	SPLIT FACED C.M.U. BLOCK, MASONRY BY CRICK BLOCK.
14	STACKED FIELD STONE MASONRY VENEER.		

COLOR MATERIAL

 <p>STACKED FIELD STONE MANUFACTURER: EL DORADO STONE EL DORADO STONE, FIELD EDO COLOR: AMANTIE</p>	 <p>PANT MANUFACTURER: DUNN-EDWARDS COLOR: FLINTSTONE (DE 6221)</p>
 <p>STUCCO FINISH COLOR: FLINTSTONE (DE 6221)</p>	 <p>BRISE-SOLEIL FACADE MANUFACTURER: FIBERDECK WED BRISE-SOLEIL</p>
 <p>WOOD PANELING MANUFACTURER: EL DORADO STONE VIRAGE RANCH COLOR: PARCHEWOOD</p>	 <p>PRECISION C.M.U. BLOCK MASONRY MANUFACTURER: ORCO BLOCK COLOR: TAN</p>
 <p>FAUX UNITS ROLL-UP DOORS MANUFACTURER: JANUS INTERNATIONAL COLOR: LG (FOREST) GREEN</p>	 <p>SPLIT-FACED C.M.U. BLOCK MASONRY MANUFACTURER: ORCO BLOCK COLOR: TAN</p>
 <p>METAL PARAPET/CORNICE/ EXTERIOR LIGHTS MANUFACTURER: DUNN-EDWARDS COLOR: BLACK-TIE (DE 6367)</p>	
 <p>PAINT MANUFACTURER: DUNN-EDWARDS COLOR: GRAY PEARL (DEC 795)</p>	

## KEYPLAN



**NUTWOOD SS**  
**PASO ROBLES, CA**

# PRELIMINARY ELEVATION

THIS DRAWING AND ITS CONTENTS ARE INSTRUMENTS OF SERVICE AND ARE THE COPYRIGHTED PROPERTY OF JORDAN ARCHITECTS, INC. THE USE IS EXPRESSLY INTENDED FOR PROJECT NOTED ABOVE AND MAY NOT BE REUSED OR REPRODUCED IN WHOLE OR IN PART WITHOUT THE WRITTEN PERMISSION OF JORDAN ARCHITECTS, INC. "COPYRIGHT" YEAR OF FIRST PUBLICATION 2009 JORDAN ARCHITECTS, INC.

JOB NUMBER: 21-1228  
SCALE: 1"=10'  
DATE: 03/22/2023



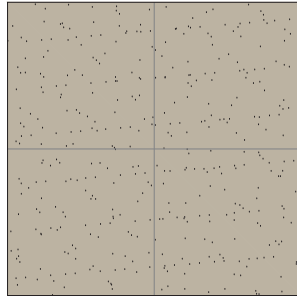
**JORDAN**  
ARCHITECTS  
131 CALLE IGLESIA, SUITE 100  
SAN CLEMENTE, CA 92672  
949.388.8090

**A.10**

# Exhibit C



**C1** STACKED FIELD STONE  
MANUFACTURE: EL DORADO STONE  
ELDORADO STONE, FEILDLEDGE  
COLOR: ANDANTE



**C2** STUCCO FINISH  
COLOR: FLINTSTONE (DE 6221)



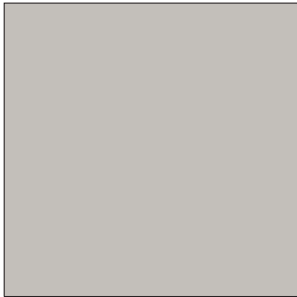
**C3** WOOD PANELING  
MANUFACTURER: EL DORADO STONE  
VINTAGE RANCH  
COLOR: PARCHWOOD



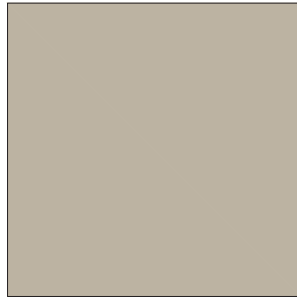
**C4** FAUX UNITS/ EXTERIOR ROLL-UP DOORS  
MANUFACTURER: JANUS INTERNATIONAL  
COLOR: LG FOREST GREEN



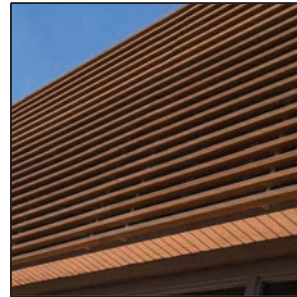
**C5** METAL PARAPET/ CORNICE/  
EXTERIOR LIGHTS  
MANUFACTURER: DUNN-EDWARDS  
COLOR: BLACK TIE (DE 6357)



**C6** STORAGE EGRESS/ EXTERIOR DOORS  
MANUFACTURER: DUNN-EDWARDS  
COLOR: GRAY PEARL (DEC 795)



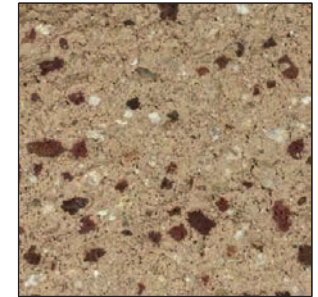
**C7** PAINT  
MANUFACTURER: DUNN-EDWARDS  
COLOR: FLINTSTONE (DE 6221)



**C8** BRISE-SOLEIL FACADE  
MANUFACTURER: FIBERDECK  
WEO BRISE-SOLEIL



**C9** PRECISION CMU BLOCK  
MANUFACTURER: ORCO BLOCK  
COLOR: TAN



**C10** SPLIT FACE CMU BLOCK  
MANUFACTURER: ORCO BLOCK  
COLOR: TAN

NUTWOOD SS  
PASO ROBLES, CA

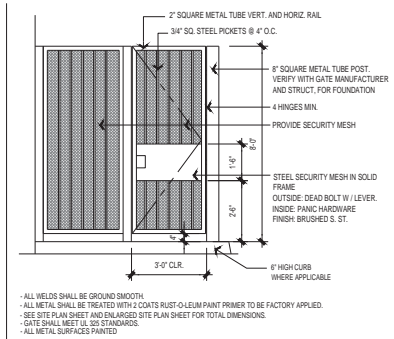
## COLOR MATERIAL BOARD

THIS DRAWING AND ITS CONTENTS ARE INSTRUMENTS OF SERVICE AND ARE THE CONFIDENTIAL PROPERTY OF JORDAN ARCHITECTS, INC. THE USE IS EXPRESSLY INTENDED FOR THE PROJECT NOTED ABOVE AND MAY NOT BE REPRODUCED OR TRANSMITTED IN ANY FORM OR BY ANY MEANS, WITHOUT THE WRITTEN PERMISSION OF JORDAN ARCHITECTS, INC. (COPYRIGHT) 11 YEAR OF FIRST PUBLICATION 2023 JORDAN ARCHITECTS, INC.

JOB NUMBER: 21-1228  
SCALE: NTS  
DATE: 03/22/2023



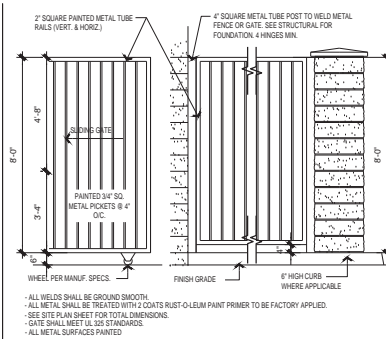
A.11



PEDESTRIAN GATE

SCALE: 3/8"=1'-0"

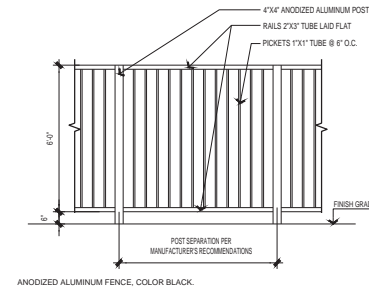
1



TYPICAL GATE / FENCE ELEVATION

SCALE: 3/8"=1'-0"

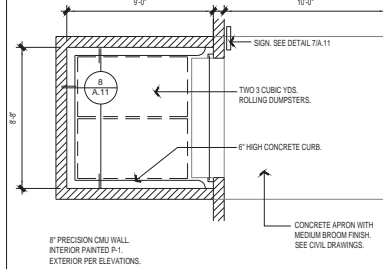
2



TYPICAL PERIMETER FENCE

SCALE: 3/8"=1'-0"

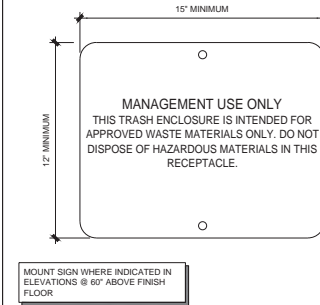
3



TRASH ENCLOSURE PLAN

SCALE: 1/4"=1'-1"

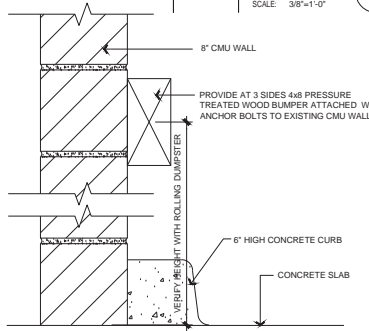
4



TRASH SIGN

SCALE: 3"=1'-0"

5



BUMPER @ TRASH ENCLOSURE

SCALE: 2"=1'-0"

6



WINE & SELF STORAGE SIGNAGE BY OTHERS

SCALE: 1"=1'-0"

7



SELF STORAGE SIGNAGE BY OTHERS

SCALE: 3/4"=1'-0"

8

NUTWOOD SS  
PASO ROBLES, CA

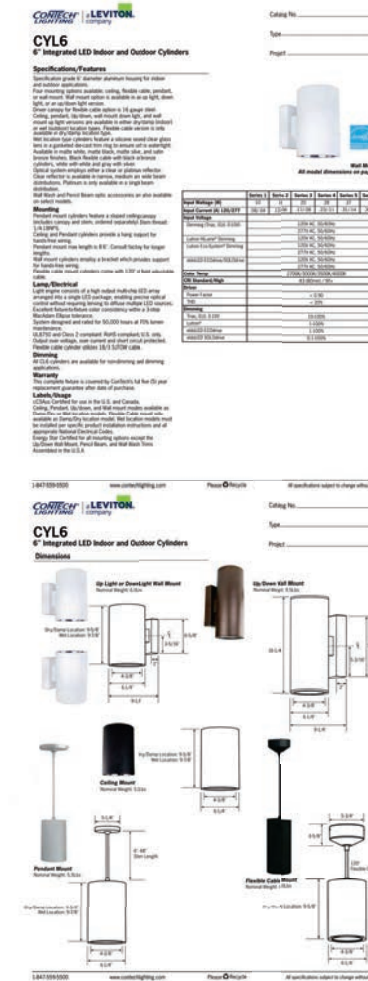
FENCE, TRASH ENCLOSURE & SIGNAGE PLAN

THIS DRAWING AND ITS CONTENTS ARE INSTRUMENTS OF SERVICE AND ARE THE PROPERTY OF JORDAN ARCHITECTS, INC. THE USER IS EXPRESSLY INTENDED FOR THE PROJECT NOTED HEREON AND MAY NOT BE REPRODUCED OR TRANSMITTED IN ANY FORM OR BY ANY MEANS WITHOUT PERMISSION OF JORDAN ARCHITECTS, INC. (COPYRIGHT) 11/06 OF FIRST PUBLICATION AND JORDAN ARCHITECTS, INC.

JOB NUMBER: 21-1228  
SCALE: AS NOTED  
DATE: 03/22/2023

*ja*  
**JORDAN**  
ARCHITECTS  
131 CALLE IGLESIA, SUITE 100  
SAN CLEMENTE, CA 92672  
949.388.8090

A.12



EXTERIOR LEED WALL PACK LIGHT FIXTURE

# PRELIMINARY LIGHTING PLAN

JOB NUMBER: 21-1228  
SCALE: AS NOTED  
DATE: 03/22/2023



**JORDAN**  
ARCHITECTS  
131 CALLE IGLESIA, SUITE 100  
SAN CLEMENTE, CA 92672  
949.388.8090