

# Encampment Resolution Funding

Interim Supportive Housing





security

## HOUSING AND HOMELESSNESS

### 1. Enhance Emergency Sheltering Services

- Enhance emergency shelter service delivery and reduce the number of unsheltered individuals by partnering with ECHO and other stakeholders
- Create Regional Homeless Services Strategic Plan with ECHO and other stakeholders including County of San Luis Obispo Homeless Manager and Behavioral Health Department
- Evaluate regional homelessness coordinator/collaborative model of service coordination

### 2. Increase Supply of Affordable and Market Rate Housing Units



## The San Luis Obispo Countywide Plan to Address Homelessness 2022-2027

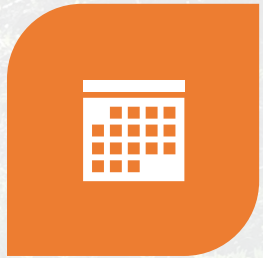


# Encampment Resolution Funding (ERF)

\$237 million competitive grant program available to assist local jurisdictions in ensuring the wellness and safety of people experiencing homelessness in encampments by providing services and supports that address their immediate physical and mental wellness and result in meaningful paths to safe and stable housing.



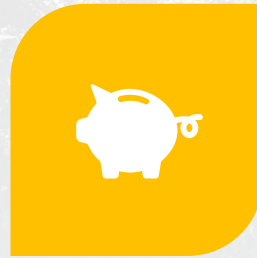
# ERF Specifics



APPLICATIONS ACCEPTED ON A  
ROLLING BASES UNTIL JUNE 30,  
2023



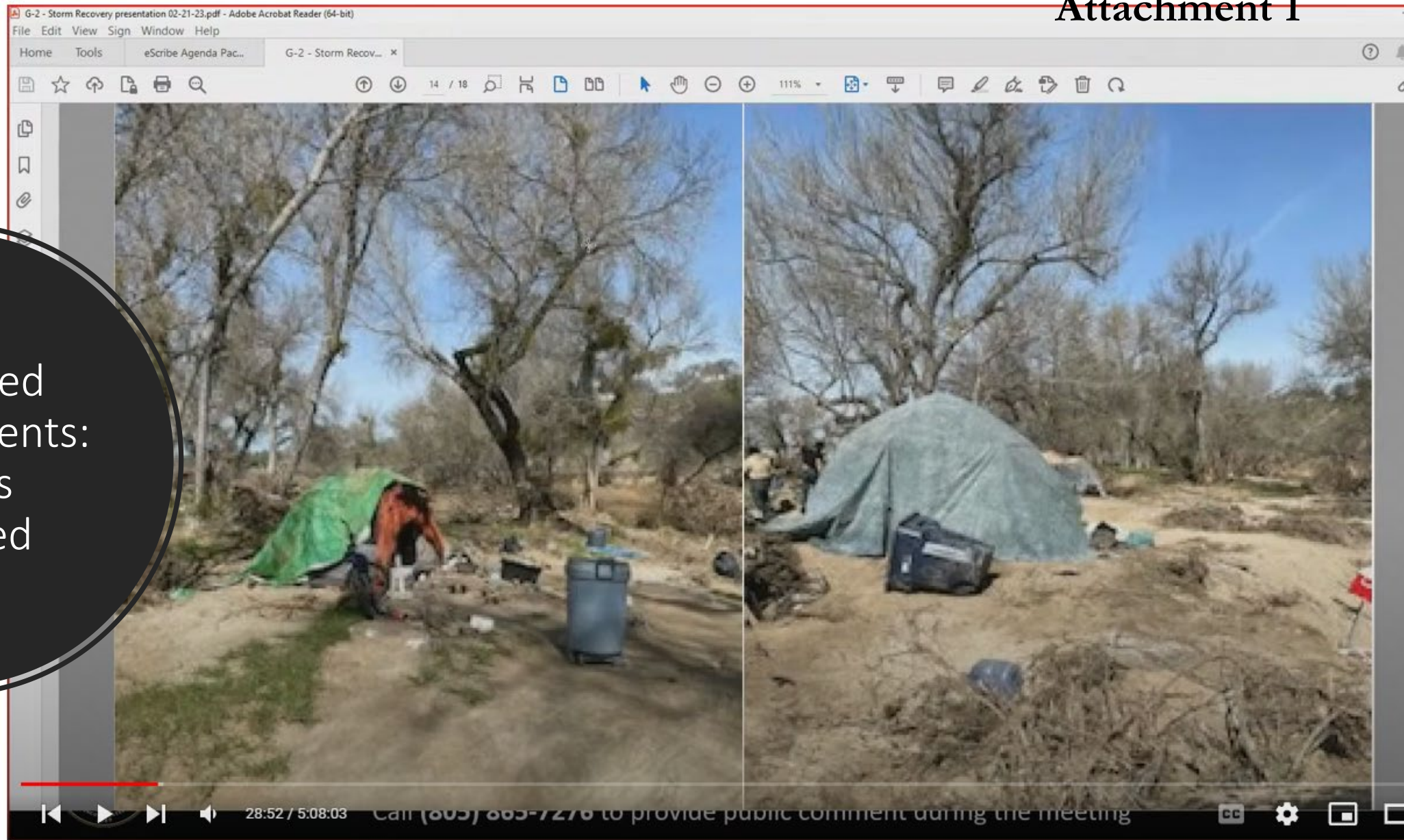
CONNECT PEOPLE EXPERIENCING  
HOMELESSNESS IN  
**ENCAMPMENTS** TO INTERIM  
SHELTER WITH CLEAR PATHWAYS  
TO PERMANENT HOUSING OR TO  
PLACE PEOPLE DIRECTLY INTO  
PERMANENT HOUSING



FUNDS OBLIGATED BY 6/30/2024  
AND EXPENDED BY 6/30/2026



Prioritized  
Encampments:  
Salinas  
Riverbed



February 21, 2023 Paso Robles City Council Meeting





# County Proposal

- County led application
- County to administer, report, and monitor the grant
- Use funds to:
  - Hire a local project coordinator
  - Establish a campus modeled after the 5 Cities Cabins for Change Program
  - Establish new service provider to manage the program with targeted outreach and wrap around services
  - Fund operations through 2026





# Local Support



PROGRAM  
DEVELOPMENT



SITE IDENTIFICATION  
AND PROVISION



PERMIT  
COORDINATION







# Grover Beach Model: Cabins for Change



**5Cities Homeless Coalition**

resources. support. hope.





# Paso Team





San Luis Obispo  
Superior Court

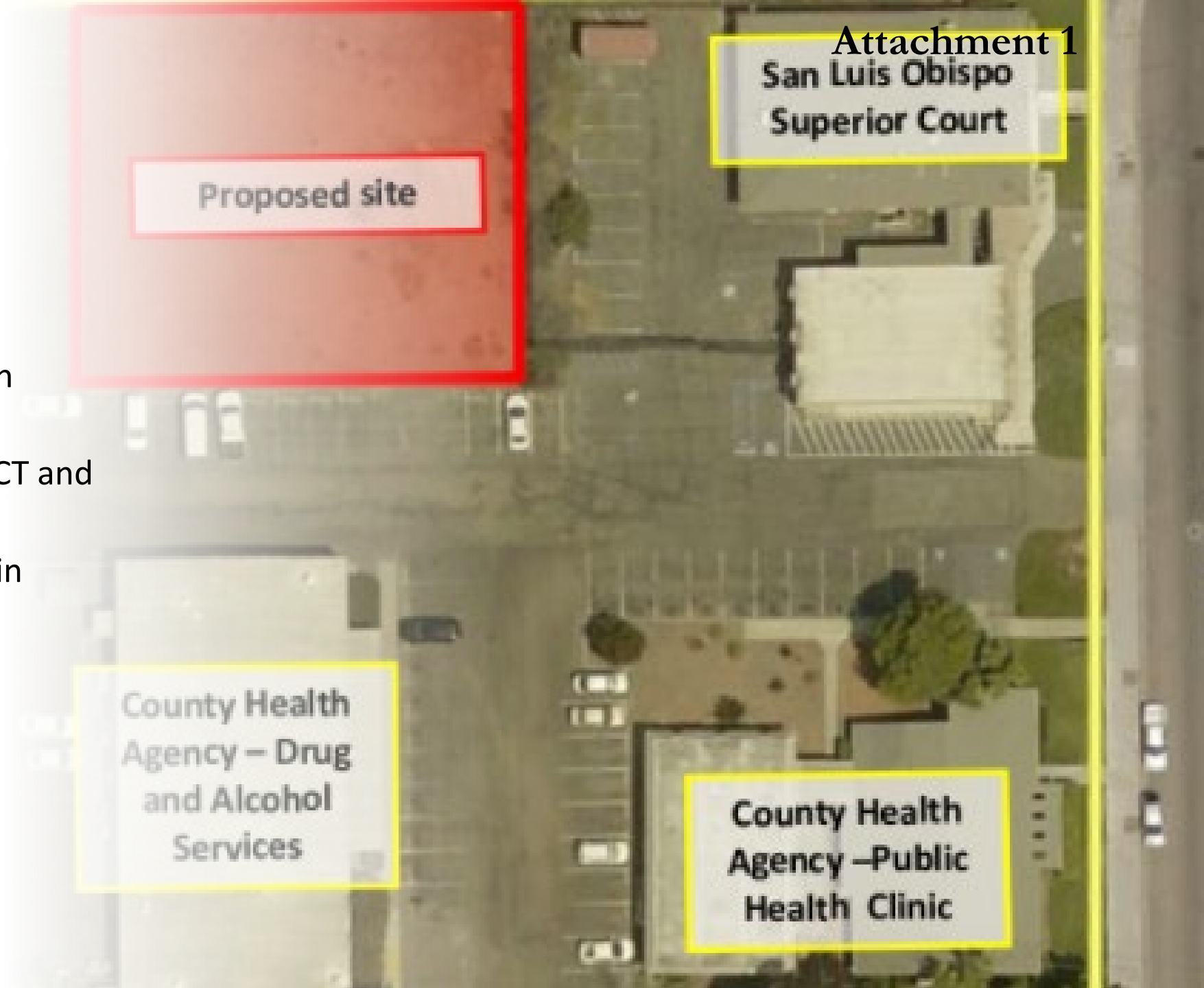
# Background

- No shelter spaces in South County
- Funded through CARES ACT and American Rescue Plan
- Built on County property in Grover Beach

Proposed site

County Health  
Agency – Drug  
and Alcohol  
Services

County Health  
Agency –Public  
Health Clinic





# Services

- 90 Day consistent housing
  - No walk ups
- Adjacent County services
- Outreach team
- Wi-fi and computer access
- Opportunities to assist with campus maintenance





# Campus

- 20 Single occupancy cabins
  - 2 ADA
- Partners and pets ok
- No families





# Cabin Specs



- 102 sq ft.
- September 21, 2021: Temporary County ordinance approved by the SLO County Board of Supervisors to establish minimum safety standards for any subject emergency housing facility located on County owned or leased public facilities.



# Campus

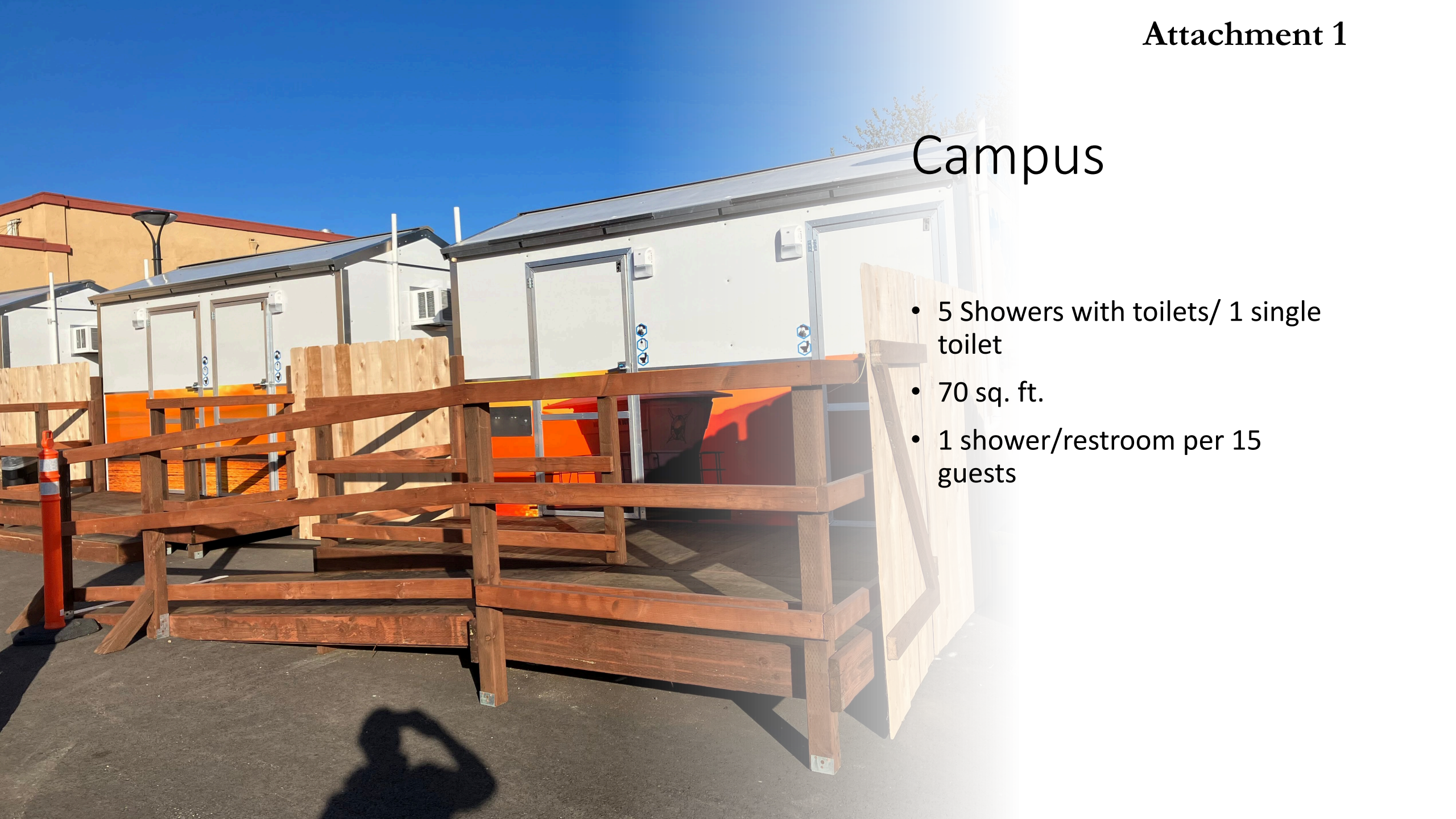
- 1 Communal dining facility





# Campus

- 5 Showers with toilets/ 1 single toilet
- 70 sq. ft.
- 1 shower/restroom per 15 guests





# Campus

- Exterior storage for each unit





# Campus

- 1 Dog wash station





# Campus

- 2 Case management offices
- Case management ratio of 1/10





# Campus

- 1 Staff operations building





# Safety

- Amnesty box for drugs and weapons
- Cameras throughout with PD access
- Alarmed pedestrian gates
- Cabins numbered on roof/door for Emergency Services
- Staff site monitors on site (not security guards)
- 9 pm curfew/ 10 pm quiet time





## Staff

- 15 total
- 2-3 staff per shift





# Budget

- Estimated annual operating budget=\$1 million per year

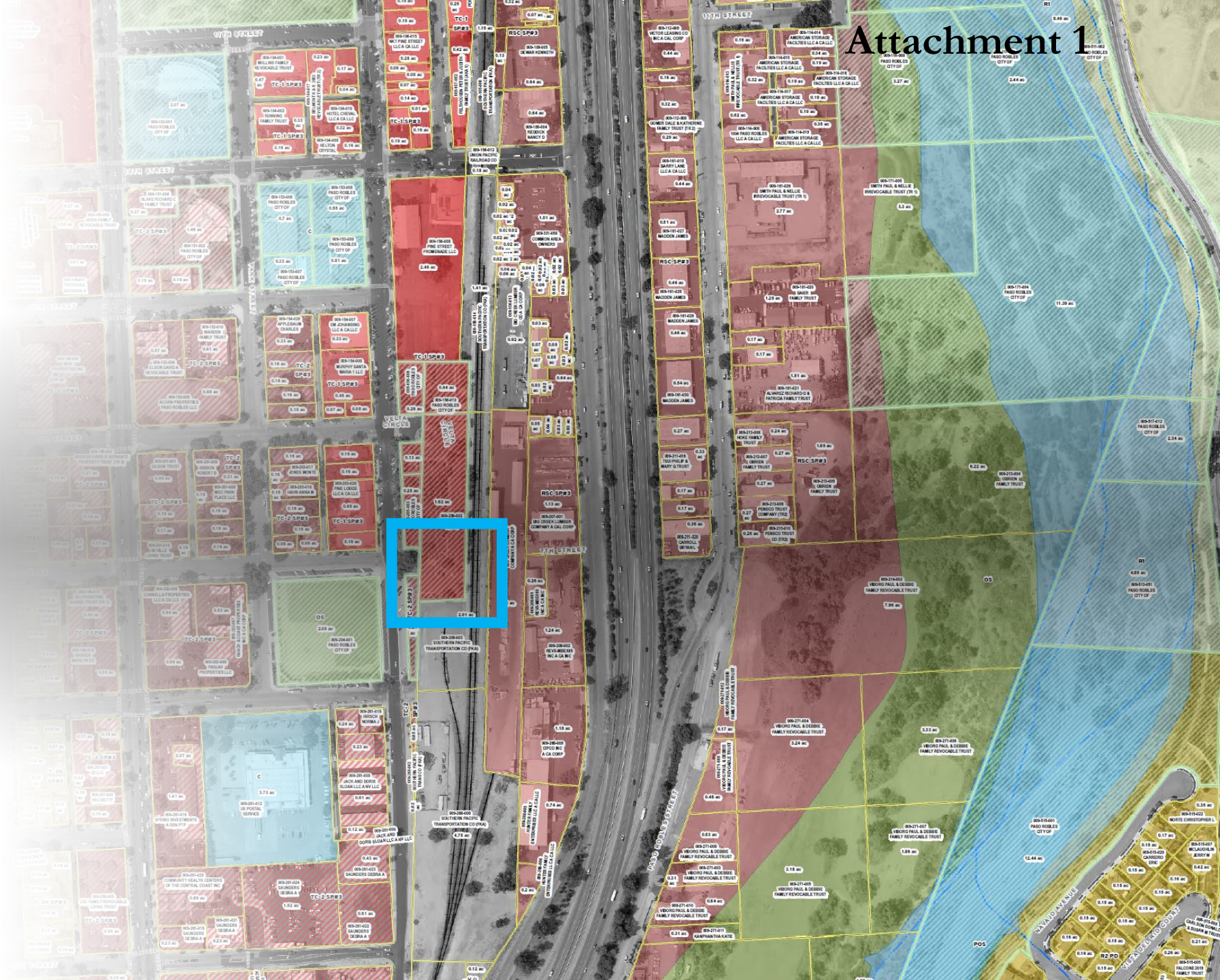








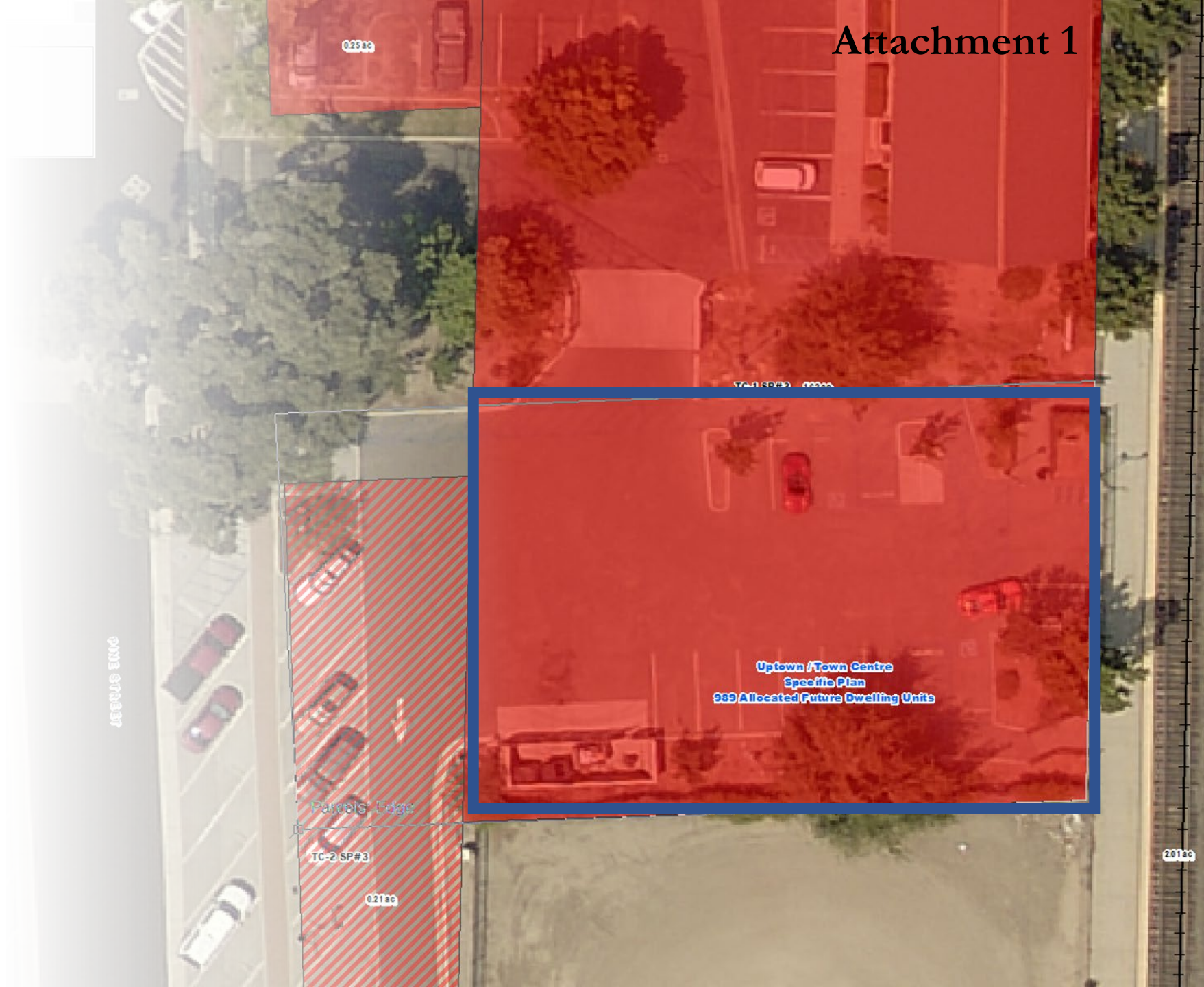
Potential  
Location





# Train Station Site

- 15,000± sq ft.





# BOSS Cubez



## Attachment 1

### Standout Features



Durable Insulated Steel Roof, Snow Load Test of 30 lbs/sqft



Vaulted Insulated High Ceiling



CFC Free Polyurethane and Fire Retardant Insulated Interior Walls



Durable Galvanized Steel Exterior / Interior Wall Surface



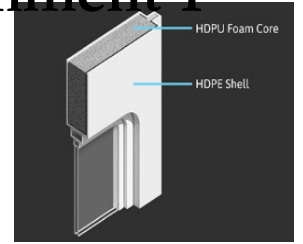
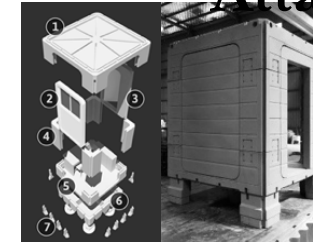
Steel Foundation Kit



# LIFEARK



## Attachment 1



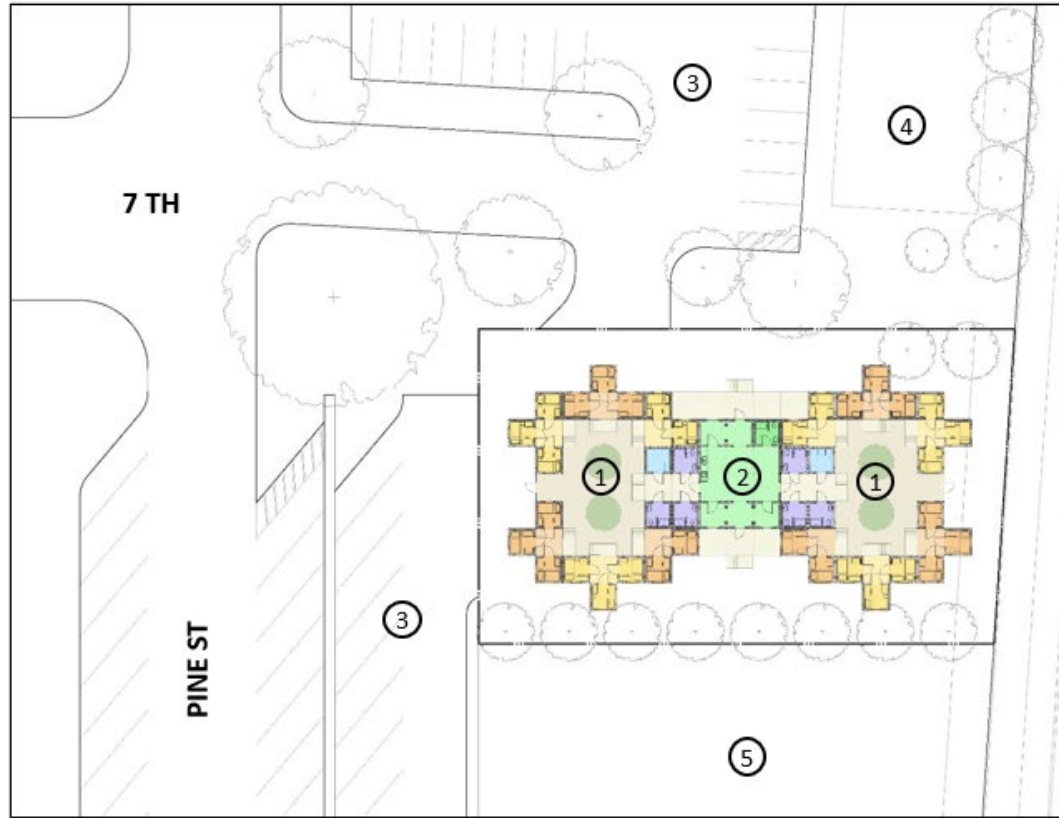
### PATENTED DESIGN

- First of its kind, fully approved mass-produced housing in the world to use plastic polymer in compliance with international and California building codes.
- Kit-of-parts with Lego-like simplicity allows easy assembly and transport
- Raised floor with 22" clear crawl space allows for all utilities to run under the building above the ground to minimize sitework costs
- Fully independent modular system allows for easy disassembly for cost effective relocation and reuse

### NEW CONSTRUCTION MATERIAL

- HDPE with PU foam insulation allows for high structural strength, buoyancy, R-40 thermal resistance and high acoustic value
- First of its kind to use plastic as a load bearing material in construction allowing design to be used in high wind and high seismic areas
- Code compliant Class-A fire rating allows lifeark to be used in the most extreme fire prone areas
- Certified raw plastic material allow use of up to 30% of post consumer recycled plastic as a main building material to help clean plastic trash from ocean and landfills



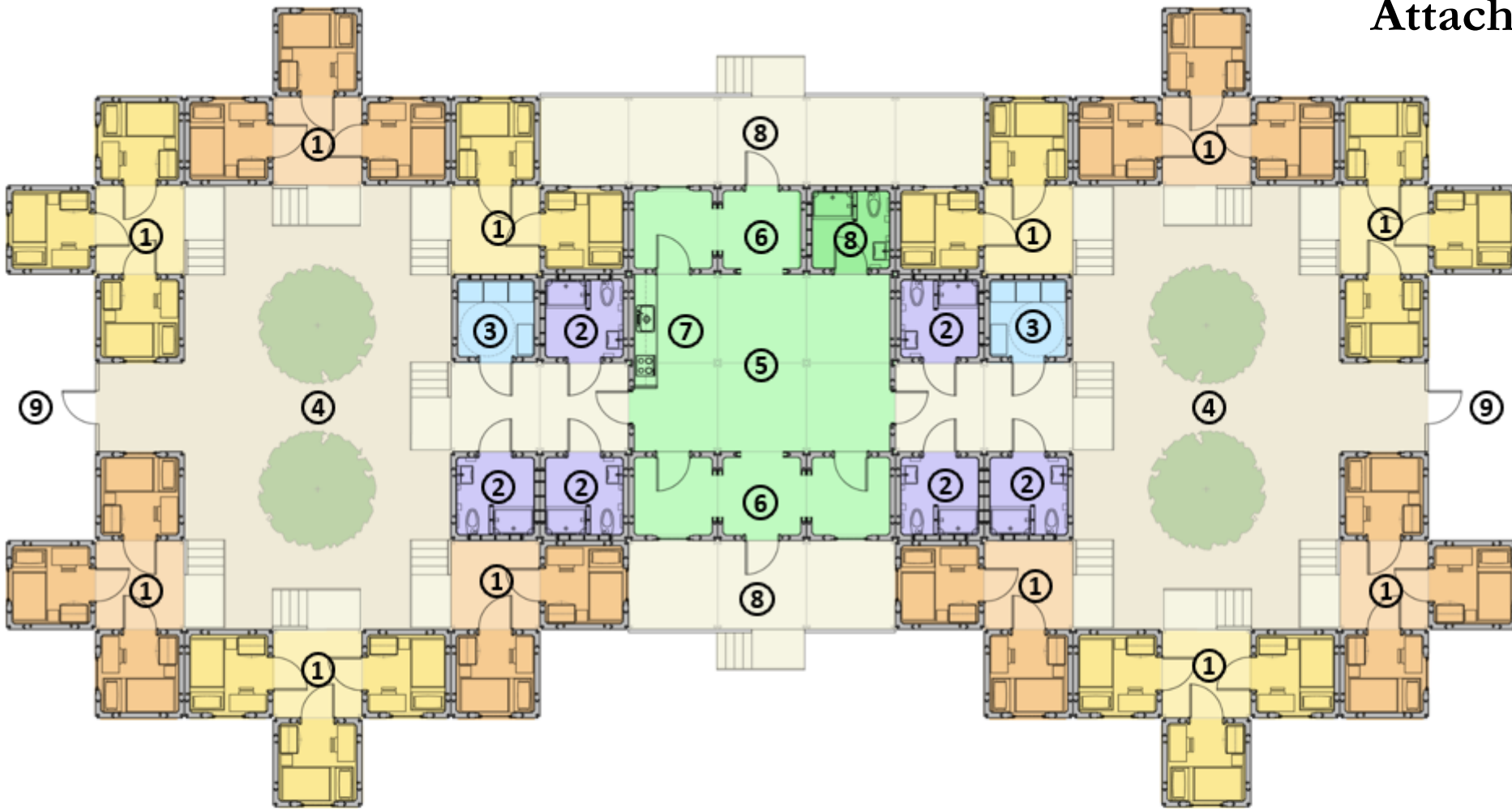


## Legend

1. Lifework bed Shelter clusters
2. Multi-Purpose/ Admin Office Building
3. Existing Parking
4. Paso Robles Station
5. Vacant Lot-Union Pacific







## Legend

- |                               |                    |
|-------------------------------|--------------------|
| 1. Lifemark Shelter ( 3 Beds) | 5. Multi-Purpose   |
| 2. Community Bathroom         | 6. Office          |
| 3. Community Laundry          | 7. Serving Kitchen |
| 4. Courtyard                  | 8. Entry Deck      |
|                               | 9. Resident Entry  |



# Fiscal Impact

There is no fiscal impact for providing a letter of support.



The County intends to apply for \$6.5 million to fund the project through June of 2026



The County will seek additional funding to maintain operations through December of 2026



# Recommendation

Authorize the City Manager to provide a letter of support for the submittal of the ERF-2-R grant to the County of San Luis Obispo and direct staff to return to City Council with a plan for implementation if the grant is approved.