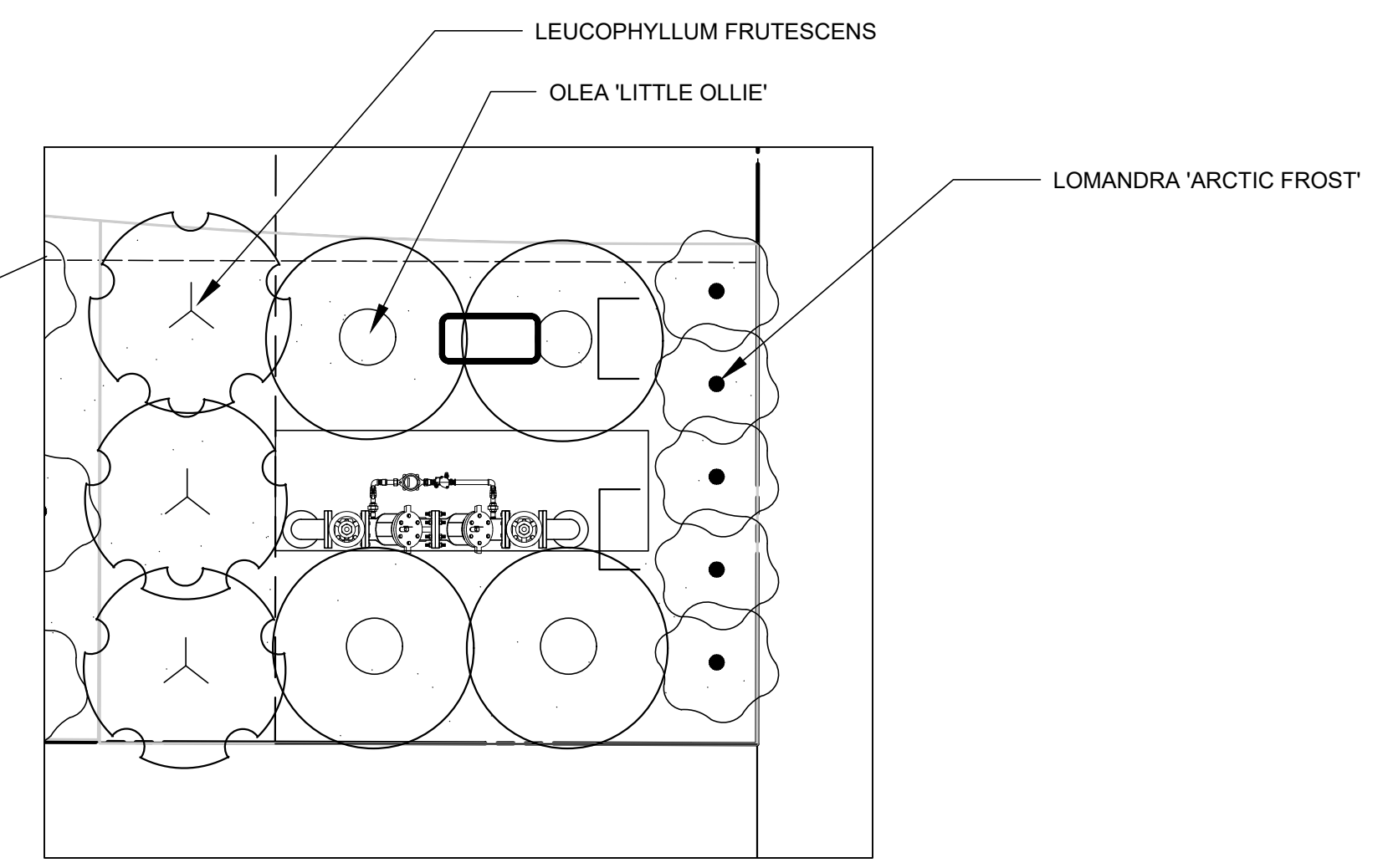


PLANT SCHEDULE

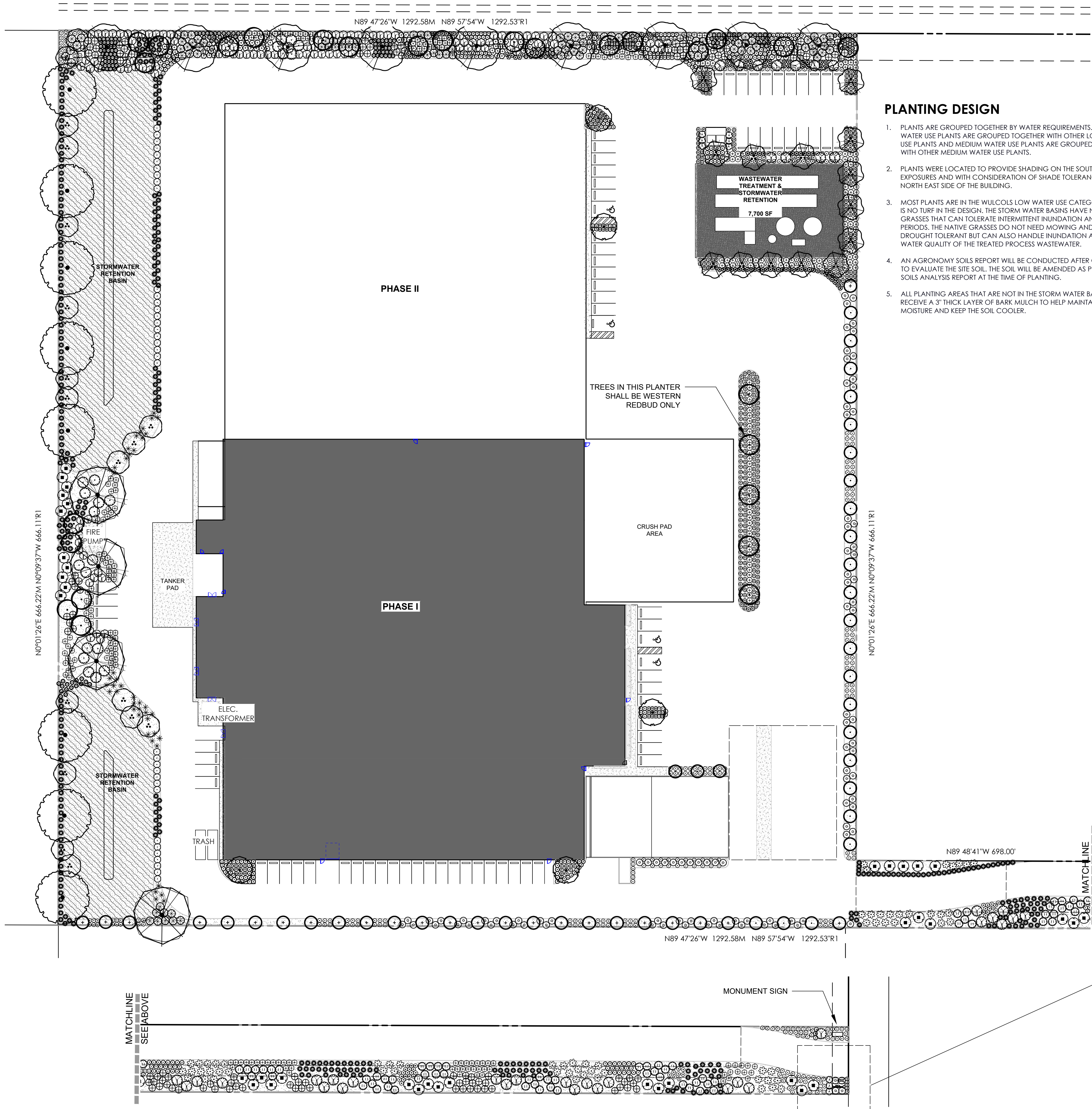
| TREES | BOTANICAL / COMMON NAME | CONT | QTY |
|--------|---|--------|-----------|
| ● | Cercis occidentalis-STD / Western Redbud | 24"box | 27 |
| + | Cupressus sempervirens / Italian Cypress | 24"box | 25 |
| ● | Feijoa sellowiana / Pineapple Guava | 24"box | 5 |
| ○ | Olea europaea 'Fruitless' - Multi / Fruitless Olive | 24"box | 14 |
| ● | Platanus racemosa / California Sycamore | 24"box | 8 |
| ● | Quercus ilex / Holly Oak | 24"box | 9 |
| ● | Quercus lobata / Valley Oak | 36"box | 4 |
| SHRUBS | BOTANICAL / COMMON NAME | CONT | QTY |
| ○ | Arctostaphylos x 'Austin Griffiths' / Austin Griffiths Manzanita | 15 gal | 39 |
| ○ | Baccharis pilularis 'Pigeon Point' / Pigeon Point Coyote Brush | 1 gal | 113 |
| * | Beschorneria yuccoides / Amole | 5 gal | 44 |
| ● | Callistemon viminalis 'Little John' / Little John Weeping Bottlebrush | 5 gal | 36 |
| ● | Ceanothus griseus horizontalis 'Yankee Point' / Yankee Point California Lilac | 5 gal | 94 |
| ● | Ceanothus x 'Joyce Coulter' / Joyce Coulter Wild Lilac | 5 gal | 22 |
| ● | Cistus x pulverulentus 'Sunset' / Sunset Rockrose | 1 gal | 62 |
| △ | Epilobium canum / California Fuchsia | 1 gal | 35 |
| ■ | Heteromeles arbutifolia / Toyon | 5 gal | 38 |
| + | Lavandula x intermedia 'Niko' / Phenomenal® Lavendin | 1 gal | 128 |
| △ | Leucophyllum frutescens / Texas Sage | 5 gal | 9 |
| ○ | Leymus condensatus 'Canyon Prince' / Native Blue Rye | 1 gal | 193 |
| ○ | Lomandra longifolia 'Arctic Frost' / Arctic Frost Rush | 1 gal | 279 |
| + | Lomandra longifolia 'Breeze' / Breeze™ Mat Rush | 1 gal | 376 |
| * | Muhlenbergia rigens / Deer Grass | 1 gal | 361 |
| ■ | Nepeta x faassenii 'Snowflake' / Snowflake Catmint | 1 gal | 73 |
| ○ | Olea europaea 'Little Ollie'™ / Little Ollie Olive | 5 gal | 94 |
| ○ | Salvia chamaedryoides / Mexican Blue Sage | 1 gal | 283 |
| + | Salvia clevelandii 'Winifred Gillman' / Winifred Gillman Cleveland Sage | 5 gal | 116 |
| + | Salvia leucantha 'Santa Barbara' / Mexican Bush Sage | 5 gal | 101 |
| ○ | Salvia leucophylla / Purple Sage | 1 gal | 68 |
| ○ | Salvia microphylla x greggii 'EGGBEN005' / Heatwave™ Blaze Sage | 1 gal | 96 |
| + | Salvia somnensis 'Mrs. Beard' / Mrs. Beard Creeping Sage | 1 gal | 182 |
| | MULCH | | 57,895 sf |

PLANTING DESIGN

- PLANTS ARE GROUPED TOGETHER BY WATER REQUIREMENTS. LOW WATER USE PLANTS ARE GROUPED TOGETHER WITH OTHER LOW WATER USE PLANTS AND MEDIUM WATER USE PLANTS ARE GROUPED TOGETHER WITH OTHER MEDIUM WATER USE PLANTS.
- PLANTS WERE LOCATED TO PROVIDE SHADING ON THE SOUTH WEST EXPOSURES AND WITH CONSIDERATION OF SHADE TOLERANCE ON THE NORTH EAST SIDE OF THE BUILDING.
- MOST PLANTS ARE IN THE WUCOLS LOW WATER USE CATEGORY. THERE IS NO TURF IN THE DESIGN. THE STORM WATER BASINS HAVE NATIVE GRASSES THAT CAN TOLERATE INTERMITTENT INUNDATION AND DRY PERIODS. THE NATIVE GRASSES DO NOT NEED MOWING AND ARE DROUGHT TOLERANT BUT CAN ALSO HANDLE INUNDATION AND THE WATER QUALITY OF THE TREATED PROCESS WASTEWATER.
- AN AGRONOMY SOILS REPORT WILL BE CONDUCTED AFTER GRADING TO EVALUATE THE SITE SOIL. THE SOIL WILL BE AMENDED AS PER THE SOILS ANALYSIS REPORT AT THE TIME OF PLANTING.
- ALL PLANTING AREAS THAT ARE NOT IN THE STORM WATER BASINS WILL RECEIVE A 3" THICK LAYER OF BARK MULCH TO HELP MAINTAIN SOILS MOISTURE AND KEEP THE SOIL COOLER.

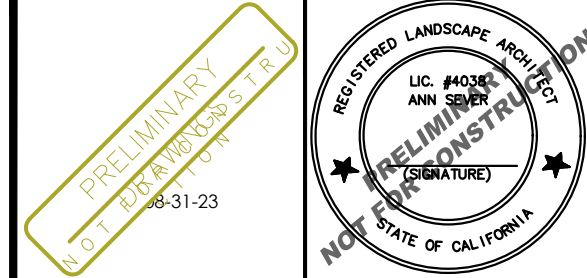


BACKFLOW SCREENING
Scale: 1/4" = 1'-0"

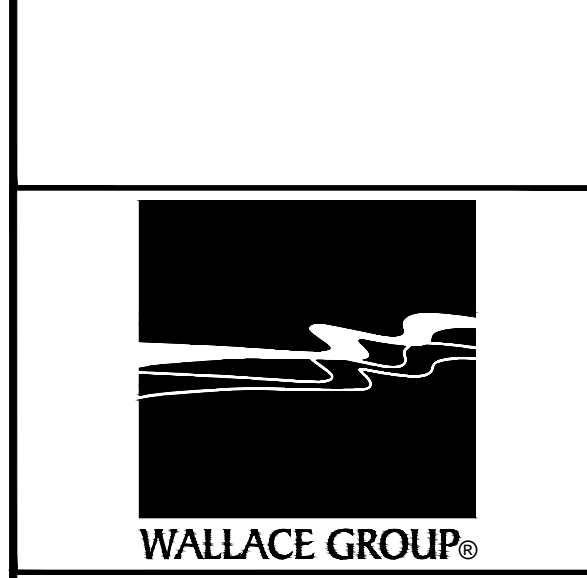


SCHEMATIC LANDSCAPE PLAN
Scale: 1" = 40'-0"

ARCHITECT STAMP CONSULTANT STAMP



OWNER INFO



DAOU Campus
5175 Airport Rd.
Paso Robles, CA 93446
APN: 025-434-002

SUBMITTALS & REVISIONS

| DATE | ISSUE |
|-----------|------------------|
| 5/30/22 | DEVELOPMENT PLAN |
| 14 SEP 22 | MUP PC #1 |

| JOB NUMBER |
|------------|
| #1922 |

AGENCY APPROVAL

SHEET TITLE

LANDSCAPE PLANTING PLAN

SHEET NUMBER
LL-1

PLANT SCHEDULE

| TREES | BOTANICAL / COMMON NAME | CONT | QTY |
|--------|---|--------|-----|
| | Cercis occidentalis-STD / Western Redbud | 24"box | 27 |
| | Cupressus sempervirens / Italian Cypress | 24"box | 25 |
| | Feijoa sellowiana / Pineapple Guava | 24"box | 5 |
| | Olea europaea 'Fruitless' - Multi / Fruitless Olive | 24"box | 14 |
| | Platanus racemosa / California Sycamore | 24"box | 8 |
| | Quercus ilex / Holly Oak | 24"box | 9 |
| | Quercus lobata / Valley Oak | 36"box | 4 |
| SHRUBS | BOTANICAL / COMMON NAME | CONT | QTY |
| | Arctostaphylos x 'Austin Griffiths' / Austin Griffiths Manzanita | 15 gal | 39 |
| | Baccharis pilularis 'Pigeon Point' / Pigeon Point Coyote Brush | 1 gal | 113 |
| | Beschomeria yuccoides / Amole | 5 gal | 44 |
| | Callistemon viminalis 'Little John' / Little John Weeping Bottlebrush | 5 gal | 36 |
| | Ceanothus griseus horizontalis 'Yankee Point' / Yankee Point California Lilac | 5 gal | 94 |
| | Ceanothus x 'Joyce Coulter' / Joyce Coulter Wild Lilac | 5 gal | 22 |
| | Cistus x pulverulentus 'Sunset' / Sunset Rockrose | 1 gal | 62 |
| | Epilobium canum / California Fuchsia | 1 gal | 35 |
| | Heteromeles arbutifolia / Toyon | 5 gal | 38 |
| | Lavandula x intermedia 'Niko' / Phenomenal® Lavandin | 1 gal | 128 |
| | Leucophyllum frutescens / Texas Sage | 5 gal | 9 |
| | Leymus condensatus 'Canyon Prince' / Native Blue Rye | 1 gal | 193 |
| | Lomandra longifolia 'Arctic Frost' / Arctic Frost Rush | 1 gal | 279 |
| | Lomandra longifolia 'Breeze' / Breeze™ Mat Rush | 1 gal | 376 |
| | Muhlenbergia rigens / Deer Grass | 1 gal | 361 |
| | Nepeta x faassenii 'Snowflake' / Snowflake Catmint | 1 gal | 73 |
| | Olea europaea 'Little Ollie'™ / Little Ollie Olive | 5 gal | 94 |
| | Salvia chamaedryoides / Mexican Blue Sage | 1 gal | 283 |
| | Salvia clevelandii 'Winifred Gillman' / Winifred Gillman Cleveland Sage | 5 gal | 116 |
| | Salvia leucantha 'Santa Barbara' / Mexican Bush Sage | 5 gal | 101 |
| | Salvia leucophylla / Purple Sage | 1 gal | 68 |
| | Salvia microphylla x greggii 'EGGBEN005' / Heatwave™ Blaze Sage | 1 gal | 96 |
| | Salvia sonomensis 'Mrs. Beard' / Mrs. Beard Creeping Sage | 1 gal | 182 |



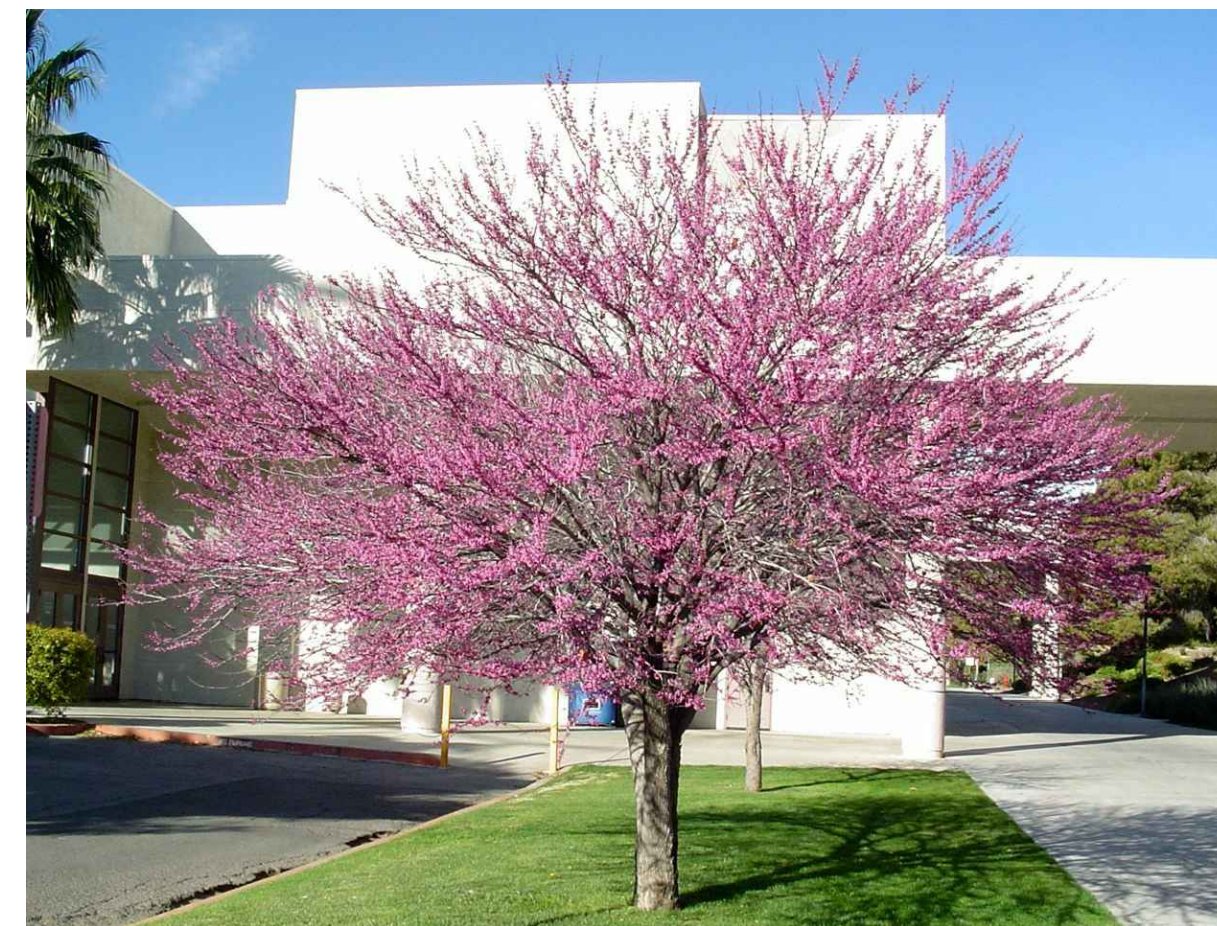
Arctostaphylos 'Austin Griffiths'



Ceanothus 'Yankee Point'



Salvia clevelandii 'Winifred Gillman'



Cercis occidentalis



Leymus condensatus 'Canyon Prince'



Salvia leucantha 'Santa Barbara'



Quercus lobata



Olea europaea 'Fruitless'



Salvia chamaedryoides



Baccharis pilularis 'Pigeon Point'



Callistemon viminalis 'Little John'



Feijoa sellowiana



Epilobium canum



Nepeta x faassenii 'Snowflake'



Muhlenbergia rigens



CUPRESSUS SEMPERVIRENS



Platanus racemosa