

SCHEMATIC PLANT SCHEDULE

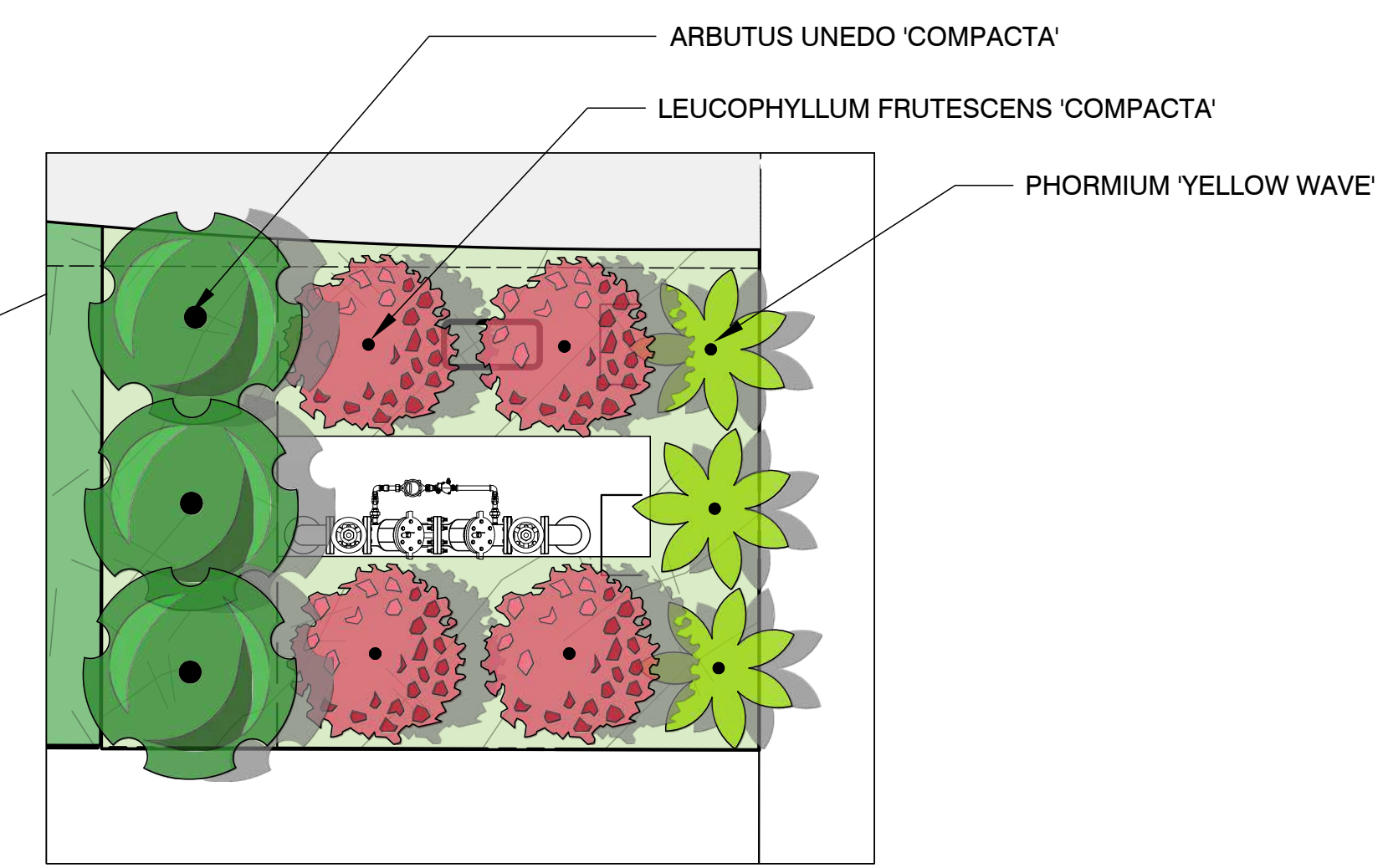
	PERIMETER SHADE Gleditsia triacanthos / Honey Locust Platanus racemosa / California Sycamore Quercus lobata / Valley Oak	8	24"box 36"box 36"box
	PARKING / ACCENT Arbutus unedo 'Oktoberfest' / Oktoberfest Strawberry Tree Cercis occidentalis / Western Redbud Chilopsis linearis 'Bubba' / Bubba Desert Willow Feijoa sellowiana / Pineapple Guava Olea europaea 'Fruitless' / Fruitless Olive	64	15 gal 24"box 24"box 24"box 24"box
	SHADE TREE Fraxinus oxycarpa 'Raywood' TM / Raywood Ash Geijera parviflora / Australian Willow Quercus douglasii / Blue Oak Quercus ilex / Holly Oak	13	24"box 24"box 24"box 24"box
	SCREEN TREE Cupressus sempervirens / Italian Cypress	47	24"box
	SHRUB AREA Arctostaphylos hookeri 'Monterey Carpet' / Monterey Carpet Hooker's Manzanita Arctostaphylos uva-ursi / Kinnikinnick Baccharis pilularis 'Pigeon Point' / Pigeon Point Coyote Brush Lavandula angustifolia 'Hidcote Blue' / Hidcote Blue English Lavender Leucophyllum frutescens / Texas Sage Lupinus albus / Bush Lupine Lupinus nanus / Sky Lupine Muhlenbergia dubia / Pine Muhly Salvia chamaedryoides / Mexican Blue Sage Salvia greggii / Autumn Sage Salvia leucophylla / Purple Sage Salvia sonomensis 'Mrs. Beard' / Mrs. Beard Creeping Sage Sesleria x 'Campo Azul' / Campo Azul Moor Grass	57,626 sf	1 gal 1 gal 1 gal 1 gal 5 gal 1 gal 1 gal 1 gal 1 gal 1 gal 1 gal
	SCREENING SHRUBS Arbutus unedo 'Compacta' / Compact Strawberry Tree Callistemon viminalis 'Little John' / Little John Weeping Bottlebrush Leucophyllum frutescens 'Compacta' / Compact Texas Sage Phormium x 'Yellow Wave' / Yellow Wave New Zealand Flax Westringia fruticosa 'Blue Gem' / Coast Rosemary	179 sf 1,070	15 gal 5 gal 1 gal 5 gal 5 gal
	STORM WATER BASIN AREA Carex praegracilis / California Field Sedge Leymus triticoides / Creeping Wild Rye Muhlenbergia rigens / Deer Grass	29,843 sf	plug plug 1 gal

PLANTING DESIGN

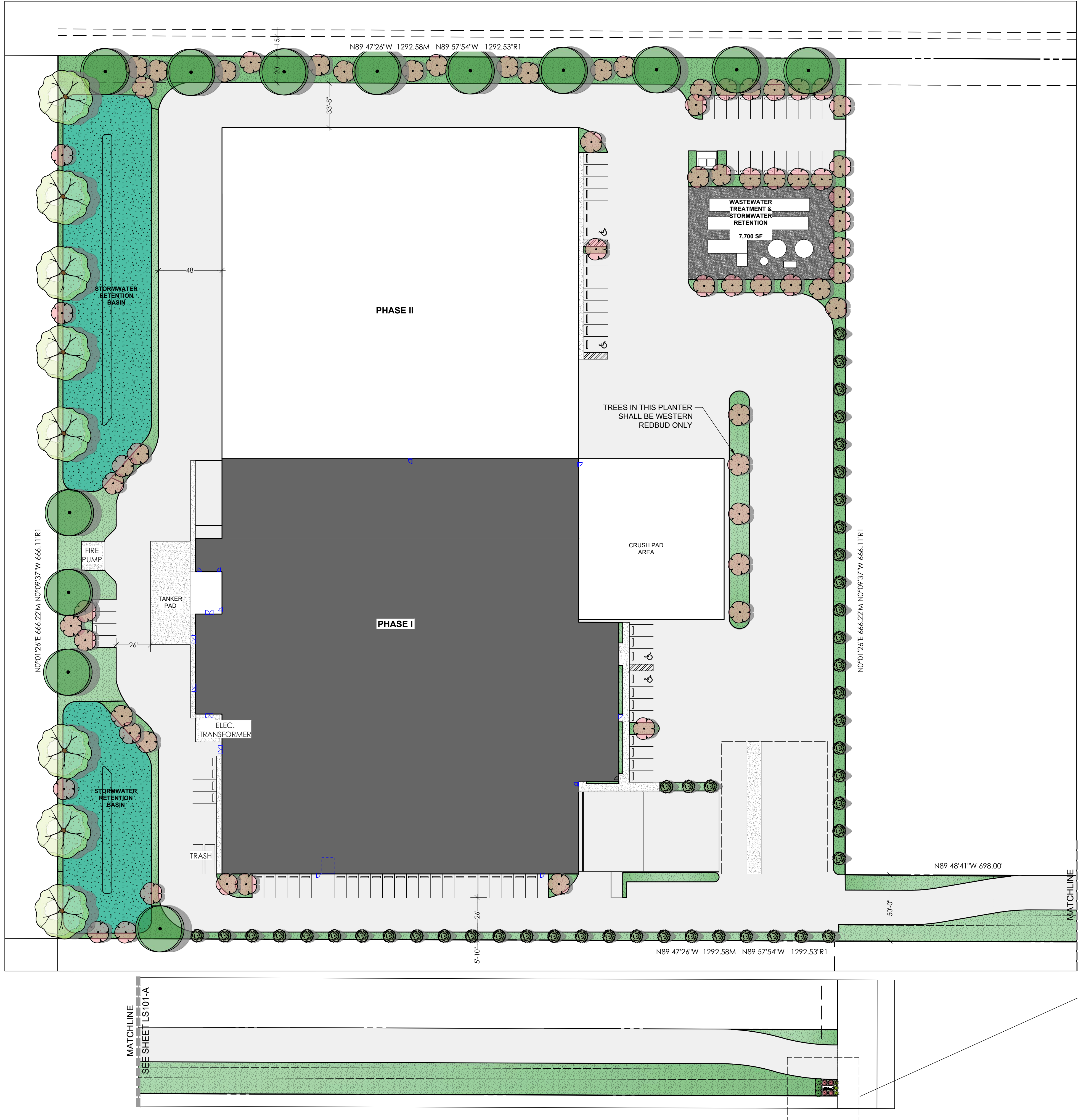
- PLANTS ARE GROUPED TOGETHER BY WATER REQUIREMENTS. LOW WATER USE PLANTS ARE GROUPED TOGETHER WITH OTHER LOW WATER USE PLANTS AND MEDIUM WATER USE PLANTS ARE GROUPED TOGETHER WITH OTHER MEDIUM WATER USE PLANTS.
- PLANTS WERE LOCATED TO PROVIDE SHADING ON THE SOUTH WEST EXPOSURES AND WITH CONSIDERATION OF SHADE TOLERANCE ON THE NORTH EAST SIDE OF THE BUILDING.
- MOST PLANTS ARE IN THE WULCOLS LOW WATER USE CATEGORY. THERE IS NO TURF IN THE DESIGN. THE STORM WATER BASINS HAVE NATIVE GRASSES THAT CAN TOLERATE INTERMITTENT INUNDATION AND DRY PERIODS. THE NATIVE GRASSES DO NOT NEED MOWING AND ARE DROUGHT TOLERANT BUT CAN ALSO HANDLE INUNDATION AND THE WATER QUALITY OF THE TREATED PROCESS WASTEWATER.
- AN AGRONOMY SOILS REPORT WILL BE CONDUCTED AFTER GRADING TO EVALUATE THE SITE SOIL. THE SOIL WILL BE AMENDED AS PER THE SOILS ANALYSIS REPORT AT THE TIME OF PLANTING.
- ALL PLANTING AREAS THAT ARE NOT IN THE STORM WATER BASINS WILL RECEIVE A 3" THICK LAYER OF BARK MULCH TO HELP MAINTAIN SOILS MOISTURE AND KEEP THE SOIL COOLER.

IRRIGATION DESIGN

- OVERHEAD IRRIGATION WILL BE RESTRICTED TO THE STORM WATER BASINS THAT WILL ALSO BE USED FOR WASTE WATER DISPOSAL.
- THE PREDOMINANT IRRIGATION EMISSION DEVICE WILL BE STREAM BUBBLERS TO REDUCE THE OCCURRENCES OF CLOGGING FROM THE USE OF WASTE WATER FOR IRRIGATION.
- AN AIR-GAP SWITCHING SYSTEM WILL BE USED TO CONNECT TO WASTE WATER WHEN AVAILABLE OR POTABLE WATER AS NEEDED.
- A "SMART" CONTROLLER WILL BE USED ALONG WITH A SITE RAIN/FREEZE SENSOR.
- A MASTER VALVE AND FLOW SENSOR WILL ALSO BE USED TO MONITOR FOR LEAKS AND LINE BREAKS. THE MASTER VALVE WILL SHUT OFF THE SYSTEM WHEN A BREAK IS DETECTED.



BACKFLOW SCREENING
Scale: 1/4" = 1'-0"



SCHEMATIC LANDSCAPE PLAN
Scale: 1" = 40'-0"