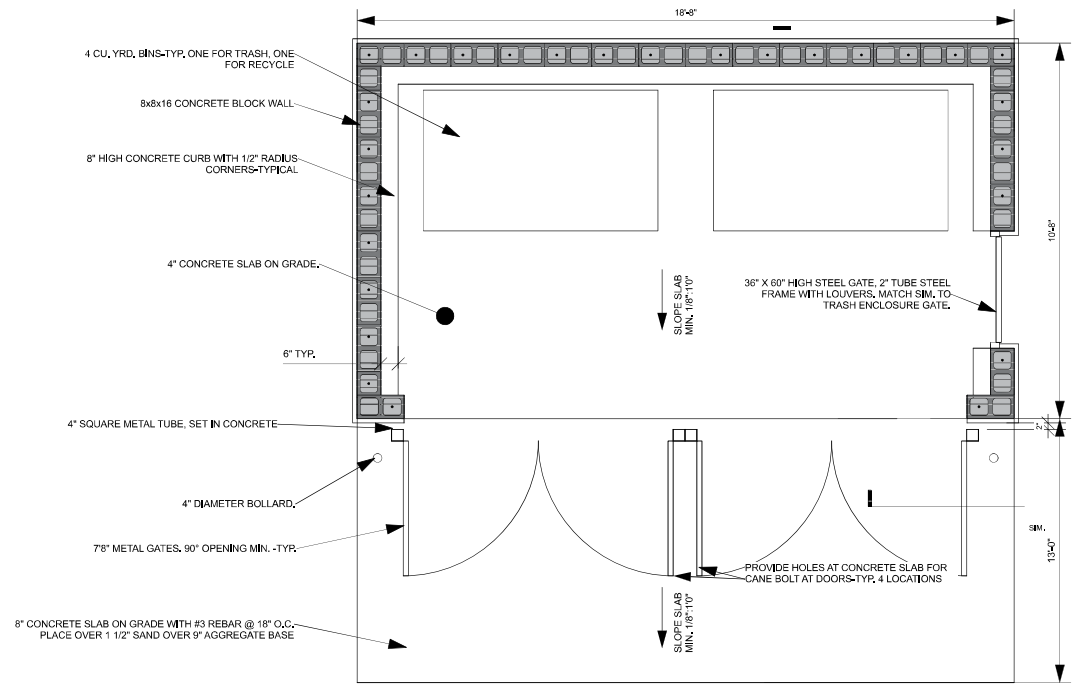
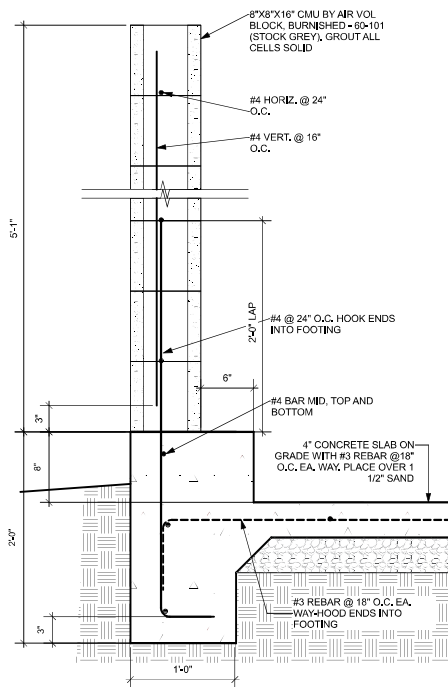


7 TRASH ENCLOSURE GATE DETAIL
Scale: 1/2" = 1'-0"



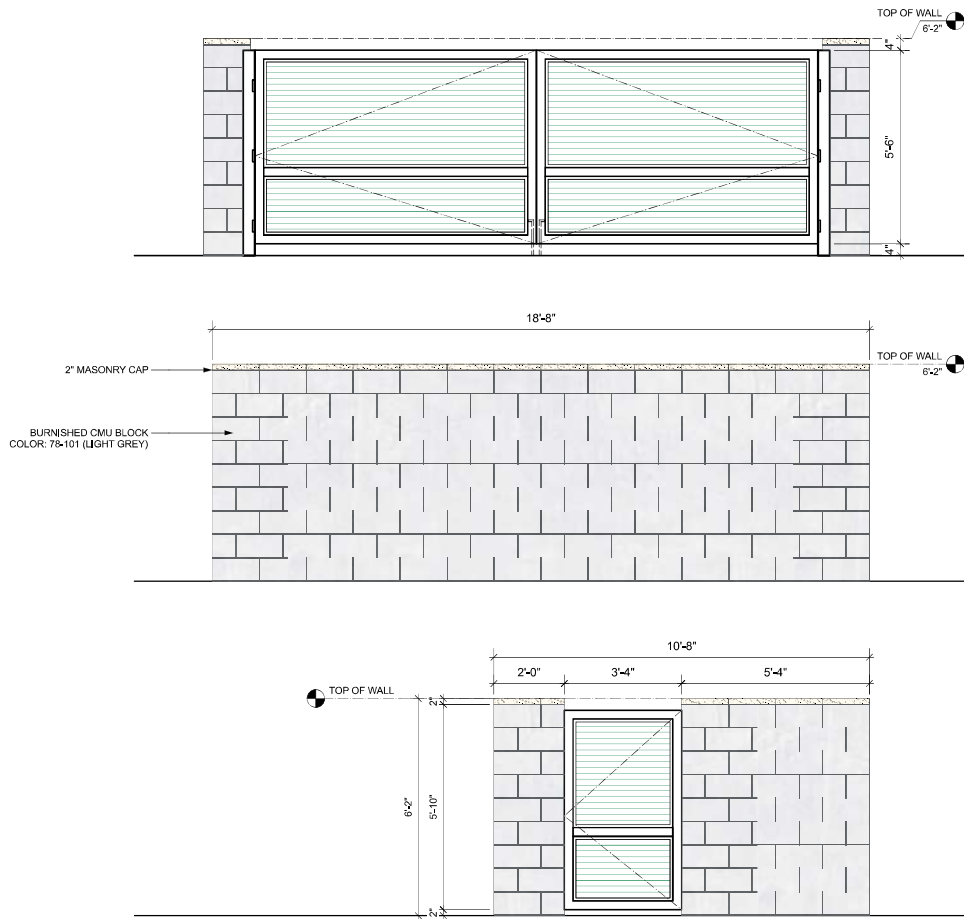
10 TRASH ENCLOSURE PLAN
Scale: 1/2" = 1'-0"



25 TRASH ENCLOSURE - CMU DETAIL
Scale: 1/2" = 1'-0"

1. ALL WORK SHALL CONFORM TO THE SECTIONS OF THE STANDARD SPECIFICATIONS ENTITLED "STANDARD SPECIFICATIONS, STATE OF CALIFORNIA, DEPARTMENT OF TRANSPORTATION," APPROVED CURRENT EDITION AND THE FOLLOWING GENERAL NOTES:
2. SUBGRADE PREPARATION SHALL BE CONSTRUCTED TRUE TO GRADE AND CROSS SECTION AND PER SOILS REPORT RECOMMENDATIONS
3. CONCRETE SHALL BE CLASS "B" AND HAVE A SLUMP BETWEEN 2.5" (63MM) AND 5.5" (141MM). THE SURFACE SHALL BE FINISHED TO GRADE AND CROSS SECTION WITH A FLOAT, TROWELED SMOOTH AND FINISHED WITH A BROOM.
4. CONCRETE SHALL CONTAIN NO ADDITIVES UNLESS PRIOR WRITTEN APPROVAL IS OBTAINED FROM THE CITY/COUNTY ENGINEER.
5. IF ANY PLACE, PREMISES OR USE OF PROPERTY ACCUMULATES OR GENERATES SUFFICIENT REFUSE TO REQUIRE MORE THAN FOUR STANDARD CONTAINERS, THE SOLID WASTE MAY REQUIRE OCCUPANT TO PROVIDE AND INSTALL A DETACHABLE BIN-BOX OF SUFFICIENT CAPACITY TO HOLD ACCUMULATED REFUSE.
6. DETACHABLE BIN REFUSE CONTAINERS SHALL BE PLACED ON A CONCRETE REFUSE CONTAINER PAD AT GRADE LEVEL.
7. THE APRON SURFACE SHALL BE THE SAME ELEVATION AS THE ENCLOSURE PAD
8. ONLY SOLID WASTE CONTAINERS ARE ALLOWED INSIDE THE ENCLOSURE. GREASE STORAGE BINS, SOLID RAG STORAGE, ETC., SHALL NEVER BE STORED IN THE ENCLOSURE
9. GATES SHALL BE SOLID METAL WITH CANE BOLTS/SLEEVES IN THE OPEN AND CLOSED POSITION EACH GATE. HUNG GATES SHALL HAVE A 4" CLEARANCE OFF THE FINISHED PAD OR APRON

28 TRASH ENCLOSURE ELEVATIONS
Scale: 1/2" = 1'-0"



SUBMITTALS & REVISIONS	
DATE	ISSUE
08AUG22	DEVELOPMENT PLAN REVIEW
03OCT22	PLANNING COMMISSION SUBMITTAL
23MAY23	PLANNING COMMISSION SUBMITTAL
JOB NUMBER 2138	
AGENCY APPROVAL	